



morphy richards

**3 Year
Guarantee***

*Upon registering your product
at morphyrichards.co.uk

MRXSTICK250 PremierGlide Cordless Stick Vacuum



Model No.
730003

User Manual

Please read and keep these instructions for future use



HEALTH AND SAFETY

The use of any electrical appliance requires the following common sense safety rules.

Please read these instructions carefully before using the product.

- **WARNING:** Whenever the cleaner is in use, due to the risk of entrapment in rotating parts, keep loose clothing, hair, fingers etc. away from the brush bar, nozzle and any hand-held accessories.
- **WARNING:** Disconnect from the mains supply before carrying out any routine maintenance, such as cleaning any blockages, changing any filters or accessing the floor nozzle.
- This appliance can be used by children aged from 8 years and above and persons with reduced physical, sensory or mental capabilities, or lack of experience and knowledge, if they have been given supervision or instruction concerning the use of the appliance in a safe way and understand the hazards involved.



HEALTH AND SAFETY

- Children shall not play with the appliance.
- Cleaning and user maintenance shall not be undertaken by children without supervision.
- This appliance is intended for household use only. It is not suitable for use in staff kitchen areas in shops, offices and other commercial environments.
- The appliance is not intended to be operated on an extension cable or by means of an external timer or separate remote control.



HEALTH AND SAFETY

PERSONAL SAFETY

- **WARNING:** Only lift the product by the carry handle.
- Always disconnect the appliance from the mains supply after use.
- Never use in the presence of explosive liquid or vapours.
- Never pick up inflammable or poisonous liquids such as petrol, copier toner or other volatile substances. Never pick up acids, asbestos or asbestos dust.
- Never touch the plug or cable with wet hands.
- Do not immerse cord, plug or cleaner in water or other liquid.
- The appliance must never be left running unsupervised.
- sharp objects or liquids.
- Use only Morphy Richards spare parts and accessories.
- Never modify the cleaner in any way.
- Repairs to electrical appliances are only to be undertaken by trained professionals. Unprofessional repairs can be dangerous for users.

ELECTRICAL REQUIREMENTS

- Check that the voltage on the rating plate of your appliance corresponds with your house electricity supply which must be A.C. (Alternating Current).

LOCATION

- Do not use or keep this product outside.
- Do not store the appliance near hot surfaces e.g. ovens or heating appliances.

CHARGER

- If the charger is damaged, it must be replaced by the manufacturer.

PRODUCT SAFETY

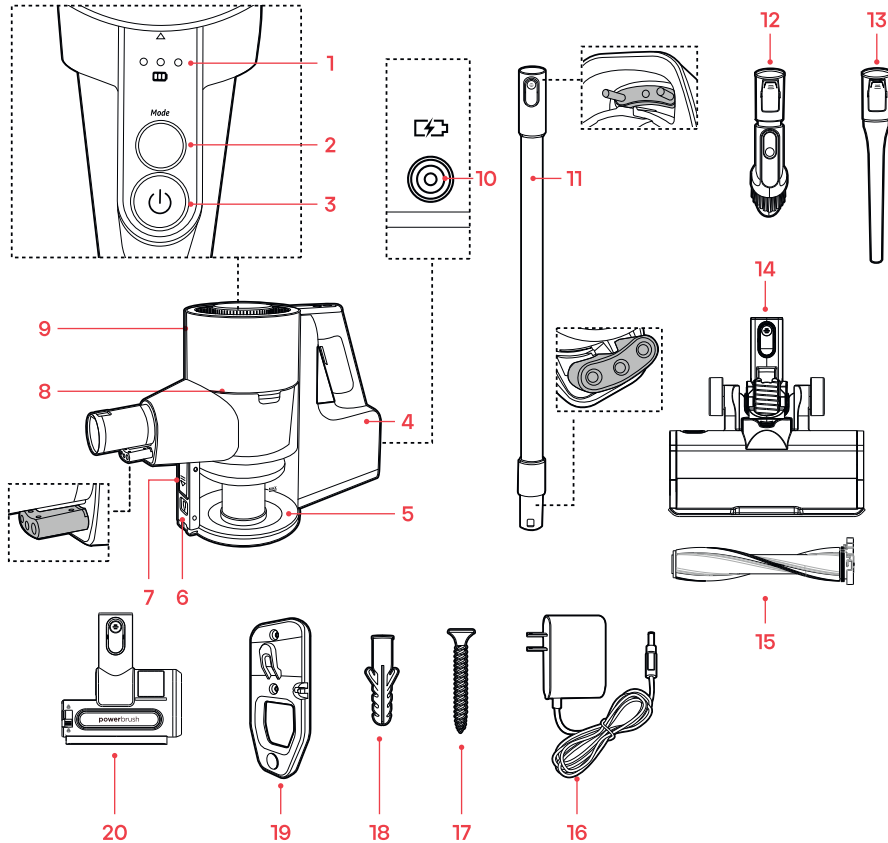
- Never use the appliance without the filters being installed.
- Never use the appliance to vacuum hot ashes, broken glass,

BATTERY SAFETY & DISPOSAL

- Do not expose a battery pack or appliance to fire or excessive heat. Exposure to fire or temperatures above 130°C/265°F may cause an explosion.
- Recommended ambient charging and storage temperature:
 - 10°C–40°C (50°F–104°F).
 - Recommended operation temperature: 25°C+/- 5°C.
- Do not incinerate electrical appliances even if the appliance is severely damaged, as lithium-ion batteries may explode in fire.
- The lithium battery is not a serviceable item. Check with your Local Authority for recycling advice.



PRODUCT OVERVIEW



- | | |
|---|-----------------------------|
| 1. Battery level indicators | 10. Charging socket |
| 2. Mode button | 11. Extension tube |
| 3. Power On/Off button | 12. 2 in 1 upholstery brush |
| 4. Main unit | 13. Crevice tool |
| 5. Dust canister with sponge filter (a - not shown) and filter assembly (b - not shown) | 14. Motorised floor nozzle |
| 6. Lid release button | 15. Roller brush |
| 7. Dust canister release button | 16. Charger |
| 8. Foam filter | 17. Screw, x2 |
| 9. HEPA filter | 18. Wall plug, x2 |
| | 19. Wall bracket |
| | 20. Motorised pet nozzle |

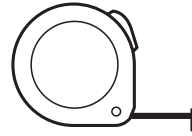
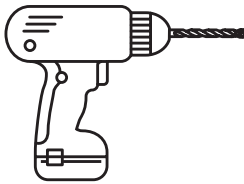


INSTALLING THE WALL MOUNT

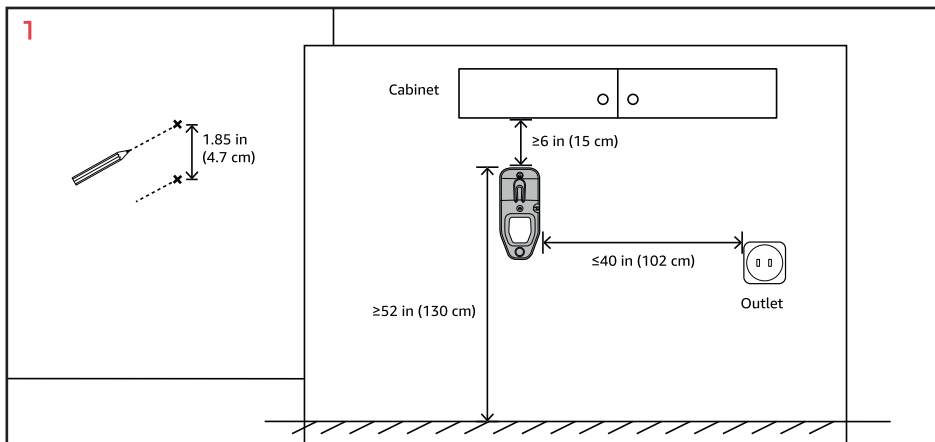
WARNING: Risk of electric shock!

Before drilling use a voltage/metal detector to locate any electric cables or water pipes.

Tools needed:



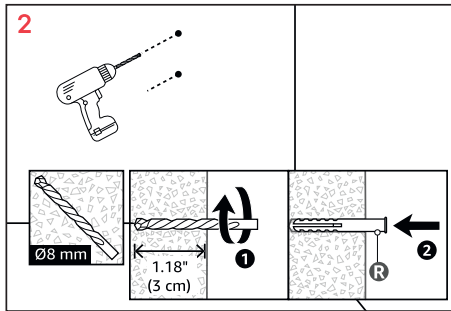
- The wall bracket should be mounted only by an adult. If in doubt, consult a professional.
- Before mounting, determine a suitable location, that should be close to a mains outlet for charging the appliance.
- The wall bracket must be fixed to a wooden or masonry/concrete wall using fasteners that are appropriate for the surface. Do not install on drywalls, wall boards or thin plywood. The mounting surface must be capable of supporting the weight of the appliance.
- Do not hang anything other than the appliance on the wall bracket.



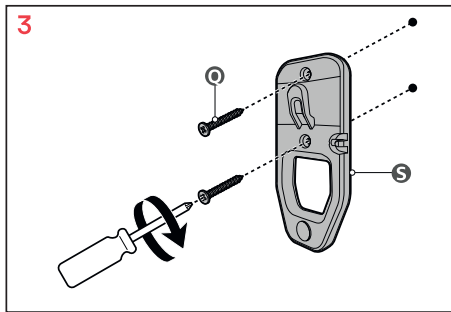
1. Mark the positions of the screw holes at the desired height.



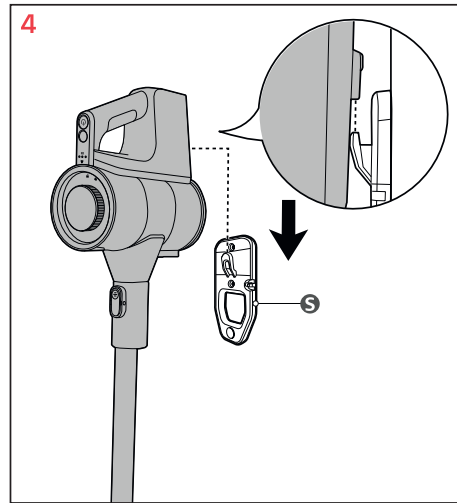
INSTALLING THE WALL MOUNT



2. Drill the holes. Insert wall plugs for concrete walls.



3. Mount the wall bracket on the wall with the 2 screws using a screwdriver.



4. Hang the appliance on the wall bracket by engaging the hook with the slot on the main unit.

CHARGING

- Assemble the vacuum cleaner as instructed in the Assembling Your Vacuum Cleaner section.
- Hang the vacuum cleaner on the wall mount.
- Connect the power cord to the charging socket.

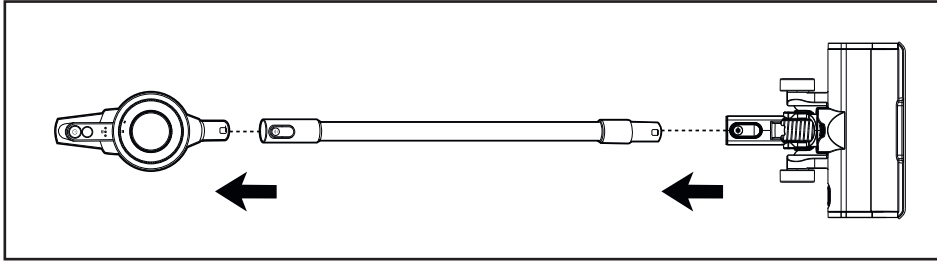
Note: Fully charge the appliance before using it for the first time. It takes approximately 4 to 6 hours to fully charge.



ASSEMBLING YOUR VACUUM CLEANER

Note: The motorised floor nozzle can be used with the extension tube for upright vacuuming or without the extension tube for handheld use.

1. To attach the motorised floor nozzle to the end of the extension tube make sure the clip is aligned with the slot on the underside of the extension tube, push both parts together until you hear a click.
2. Next, insert the other end of the extension tube into the main unit's air inlet until you hear a click.



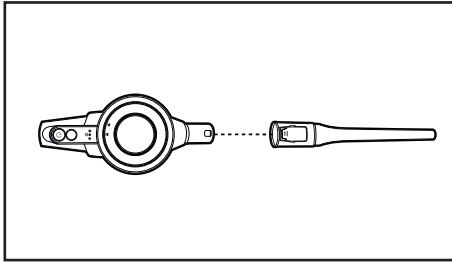
USING YOUR VACUUM CLEANER

Note: For optimum performance the vacuum cleaner must be fully charged before use.

1. Press the power on/off button (3) to switch the appliance on.
2. Press the Mode button (2) to select the desired suction power (Low/ Medium/ High).
3. After use, press the power on/off button (3) button to switch the appliance off.

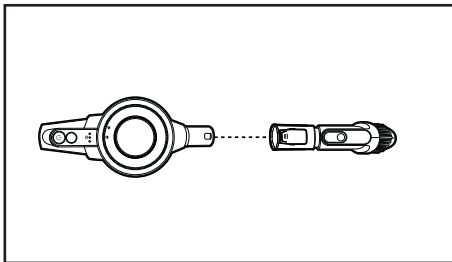


Caution: The vacuum cleaner **MUST** be switched off while attaching and detaching the accessories.



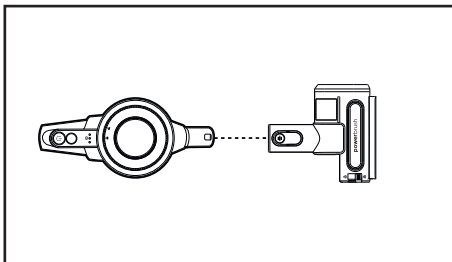
Crevice Tool

The crevice tool can be attached on the extension tube or the main unit's air inlet. It is perfect for vacuuming tight corners and small spaces, used with the extension tube it gives you an extra reach to vacuum cobwebs or hard-to-reach areas.



2-in-1 Brush Tool

The 2-in-1 brush tool can be attached on the extension tube or the main unit's air inlet. The brush is retractable. Use the flat side to vacuum beds, sofas, rugs or any other flat surfaces. Use the brush for general dusting tasks, such as dusting furniture and shelves, etc.



Motorised Pet Nozzle

The motorised pet nozzle can be attached on the extension tube or the main unit's air inlet to remove pet hair from stairs, carpet and upholstery.

Detaching the tools

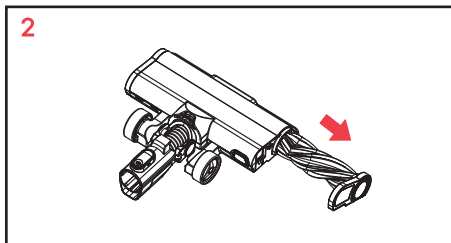
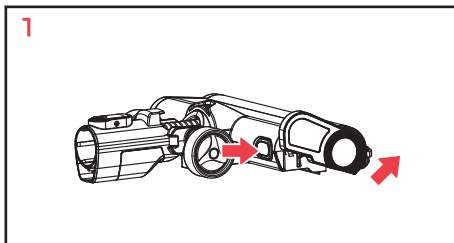
Press the release button on the extension tube/motorised floor brush/ crevice tool/2-in-1 brush and then pull to detach the tool from the main unit.



USING THE ATTACHMENTS

Changing the roller brush/ plush anti-tangle roller.

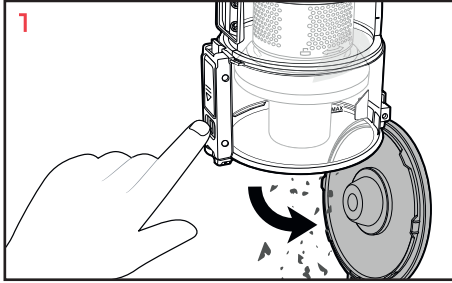
Press the roller release button on the side of the motorised floor nozzle and slide out the roller, replace with your preferred roller brush or anti-tangle roller.



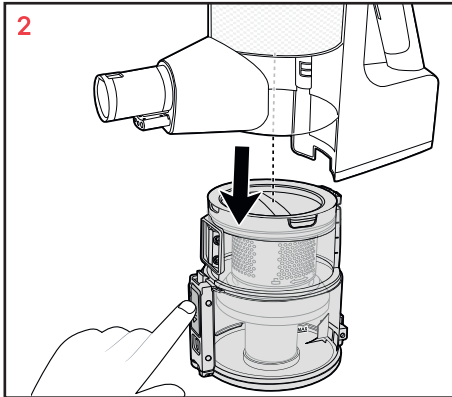


CLEANING & MAINTENANCE

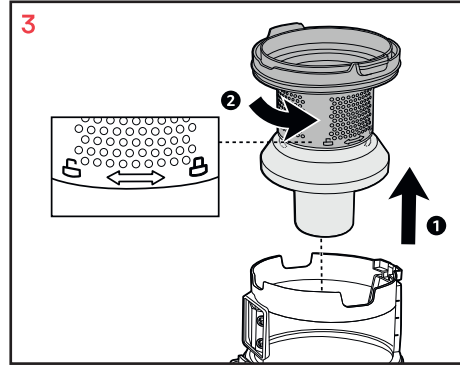
Emptying/Cleaning the Dust Canister and Filters



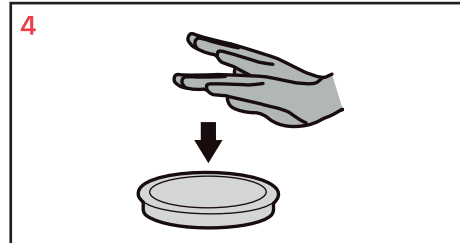
1. Hold the main unit over a dustbin, press the dust canister lid release lever, the bottom flap will open.



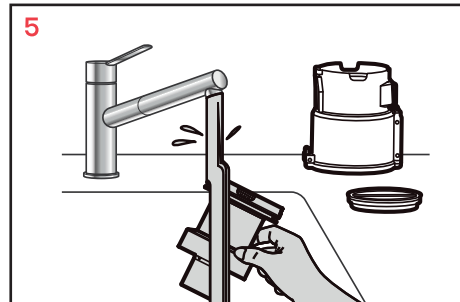
2. Press the dust canister release button and pull the dust canister downwards to remove the dust canister from the main unit.



3. Hold the filter assembly and pull upwards to remove from the dust canister.



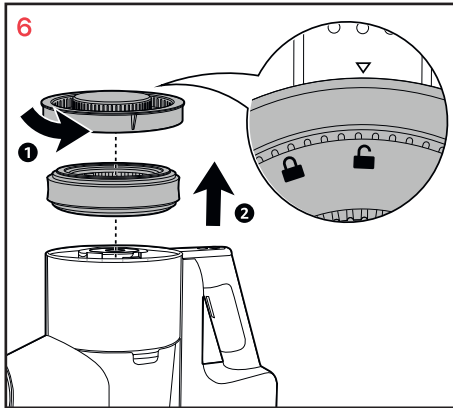
4. Remove the foam filter, lay it white side down, tap to remove dust.



5. Rinse the foam filter and filter assembly under running water.



CLEANING & MAINTENANCE



6. Remove the lid from the main unit and take out the HEPA filter, tap the filter to remove dust from the pleats, ensure any dust sticking to the sponge around the outer of the filter is also removed.

Note: All parts **MUST** be thoroughly dried before re-assembling the filters in the dust canister.

Cleaning the Motorised Floor Nozzle

1. To remove the roller follow the instructions for changing the roller brush/ plush anti-tangle roller.
2. Any build-up of hair etc, can now be removed from the roller brush.
3. Once the roller brush is cleaned, replace it by sliding back into the floor nozzle ensuring that it is securely fitted.

ENERGY CONSUMPTION

Information for power consumption and maximum time to reach applicable low power condition:

| | |
|--|---|
| Standby mode / low power consumption condition: | <0.5W |
| Setting: | After being fully charged, the appliance will automatically enter a low power consumption mode. |
| The maximum time needed to reach the applicable low power condition: | 10 minutes |



TROUBLESHOOTING

| Problem | Solution |
|--------------------------------------|---|
| The vacuum cleaner doesn't switch on | The battery is low. Charge the vacuum cleaner with the charger supplied. |
| | Try a different appliance in the socket as it may be the socket that is at fault. |
| The vacuum cleaner cuts out. | The vacuum cleaner has overheated. 1. Clear any blockages from the accessories/ attachments. 2. Clean the dust canister and the filters. 3. Allow the appliance to cool down for at least 30 minutes before switching it on. |
| | Check for dirt on the main unit connectors and motorised accessories and clean if required. |
| | The battery is low. Charge the vacuum cleaner with the charger supplied. |
| Poor suction. | Check for blockages, full dust canister and dirty filters. Maintain as necessary. Leave the vacuum to cool down for 30 mins before using again. |
| | Clean the dust canister and the filters. |
| Motorised brush doesn't rotate. | Empty dust canister and clean filters regularly. |
| | Check for dirt on the main unit connectors and motorised accessories and clean if required. |
| Vacuum cleaner is noisy. | Switch off the vacuum cleaner and check for blockages |
| | Empty and clean the dust canister. |
| | Clean/wash the filters. |
| Dust comes from the main unit. | Ensure filters are fitted correctly. |
| | Clean/wash the filters if required. |



SPARE PARTS

| Part Number | Description | Qty per Product | Key Number |
|-------------|---|-----------------|------------|
| 07109 | Motorised floor nozzle complete (including roller brush, retaining clip and silkscreen) | 1 | 15 |
| 07110 | Floor nozzle roller brush | 1 | N/A |
| 07112 | Extension tube red | 1 | 11 |
| 07072 | Crevise nozzle | 1 | 13 |
| 07073 | Dusting brush / multi-tool | 1 | 12 |
| 07074 | Charger | 1 | 16 |
| 07113 | Foam filter | 1 | 5A |
| 07114 | Pleated filter | 1 | 4 |
| 07115 | Filter assembly | 10 | 5B |
| 07116 | Dust canister including release clip | 1 | 5 |
| 07129 | Wall mount bracket assembly | 1 | 19 |
| 07128 | Motorised Pet Nozzle | 1 | 21 |



CONTACT US

If you are having a problem with your appliance, please contact our Helpline, as we are more likely to be able to help than the store you purchased the item from. Please have the product name, model number and serial number to hand when you contact us to help us deal with your enquiry quicker.

email: hello@morphyrichards.co.uk

www.morphyrichards.co.uk

PRODUCT RECYCLING



For electrical products sold within the European Community, at the end of the electrical products useful life, it should not be disposed of with household waste.

Please recycle where facilities exist.

Check with your Local Authority or retailer for recycling advice in your country.





NOTES





REGISTERING YOUR 3 YEAR GUARANTEE

Your standard 2 year guarantee is extended for an additional 1 year when you register the product within 28 days of purchase with Morphy Richards. If you do not register the product with Morphy Richards within 28 days, your product is guaranteed for 2 years.



**To validate your 3 year guarantee,
scan the QR code or register online
at www.morphyrichards.co.uk**

N.B. Each qualifying product needs to be registered with Morphy Richards individually. Please note that the 2 year guarantee is only available in the UK. Please refer to the 2 year guarantee for more information.

YOUR 2 YEAR GUARANTEE

It is important to retain the retailer's receipt as proof of purchase. Staple your receipt to the back cover for future reference.

Please quote the following information if the product develops a fault. These numbers can be found on the base of the product.

Model no.

Serial no.

All Morphy Richards products are individually tested before leaving the factory. In the unlikely event of any appliance proving to be faulty within 28 days of purchase, it should be returned to the place of purchase for it to be replaced. If the fault develops after 28 days and within 24 months of original purchase, you should contact the Helpline quoting Model number and Serial number on the product, or write to Morphy Richards at the address shown. You may be asked to return a copy of proof of purchase.

Subject to the exclusions set out on the next page (see Exclusions), the faulty appliance will then be repaired or replaced as appropriate and dispatched usually within 7 working days of receipt.

If, for any reason, this item is replaced or repaired during the 2 year



REGISTERING YOUR 3 YEAR GUARANTEE

guarantee period, the guarantee on the new item will be calculated from the original purchase date. Therefore it is vital to retain your original till receipt or invoice to indicate the date of initial purchase.

To qualify for the 2 year guarantee, the appliance must have been used according to the instructions supplied.

The appliance is intended for domestic use only. Misuse or use for commercial or any other purpose will render the guarantee invalid.

Exclusions

Morphy Richards shall not be liable to replace or repair the goods under the terms of the guarantee where:

1. The fault has been caused or is attributable to accidental use, misuse, negligent use or used contrary to the manufacturer's recommendations or where the fault has been caused by power surges or damage caused in transit.
2. The appliance has been used on a voltage supply other than that stamped on the products.
2. Repairs have been attempted by persons other than our service staff (or authorised dealer).
3. The appliance has been used for hire purposes or non domestic use.
4. The appliance is second hand or refurbished.
5. Morphy Richards reserves the right not to carry out any type of servicing under the guarantee at its discretion.

This guarantee does not confer any rights other than those expressly set out above and does not cover any claims for consequential loss or damage. This guarantee is offered as an additional benefit and does not affect your statutory rights as a consumer. Morphy Richards products are intended for household use only. See usage limitations within the location safety instructions.

Disclaimer

Morphy Richards has a policy of continuous improvement in product quality and design. The company, therefore reserves the right to change the specification of its models at any time.



VC730003MUK Rev1

morphy richards



@morphyrichardsuk #loveyourmorphy

[morphyrichards.co.uk](https://www.morphyrichards.co.uk)

Morphy Richards

9 Cabot Lane, Poole, Dorset, BH17 7BY, UK

