



# morphy richards

**3 Year  
Guarantee\***

\*Upon registering your product  
at [morphyrichards.co.uk](http://morphyrichards.co.uk)

## FROSTPRO 15kg Bullet Ice Maker



Model No.  
**451501**

## User Manual

Please read and keep these instructions for future use





## HEALTH AND SAFETY

The use of any electrical appliance requires the following common sense safety rules.

**Read these instructions carefully and retain for future reference.**

- This appliance can be used by children aged from 8 years and above and persons with reduced physical, sensory or mental capabilities, or lack of experience and knowledge, if they have been given supervision or instruction concerning the use of the appliance in a safe way and understand the hazards involved.
- Children shall not play with the appliance.
- Cleaning and user maintenance shall not be made by children unless they are older than 8 and supervised.
- Keep the appliance and its cord out of reach of children less than 8 years.
- If the supply cordset is damaged, contact Morphy Richards for advice.





## HEALTH AND SAFETY

- This appliance is intended for household use only. It is not suitable for use in staff kitchen areas, in shops, offices and other commercial environments.
- The appliance is not intended to be operated on an extension cable or by means of an external timer or separate remote control.





## HEALTH AND SAFETY

### LOCATION

- Do not use outdoors or near water.
- Always locate your appliance away from the edge of the worktop or table.
- Ensure that the appliance is used on a firm, flat surface. Do not use on carpet or other surfaces that could be damaged by water spillage.
- **WARNING:** Keep ventilation openings in the main unit clear of any obstructions.
- **IMPORTANT:** Do not use too close to curtains, draperies, walls, cupboards and other flammable materials.

### MAINS CABLE

- The mains cable should reach from the socket to the appliance without straining the connections.
- Do not let the mains cable hang over the edge of the worktop or open space where a child could reach it.
- Do not let the cable run across a cooker or hot area which might damage the cable.
- Never leave the appliance connected to the socket outlet when not in use.
- Do not operate the appliance with a damaged cable.

### PERSONAL SAFETY

- To protect against the risk of electrical shock do not put the appliance in water or in any other liquid.
- Do not use the appliance for other than intended use.

### OTHER SAFETY CONSIDERATIONS

- Do not switch on the appliance when it is upside down or laid on its side.
- Do not operate with a damaged cable or after the appliance malfunctions or has been damaged in any manner. Contact Morphy Richards for advice.
- The use of attachments or tools not recommended by Morphy Richards may cause fire, electric shock or injury.
- Do not place on or near a hot gas or electric burner.
- Dispose of the appliance according to local regulations regarding the flammable refrigerant and gas.
- Never put flammable, explosive and corrosive articles into the ice maker.
- Never use the ice maker when there is flammable gas leakage.
- Never store or use gas and other flammable articles near the ice maker to avoid any fire.



## HEALTH AND SAFETY

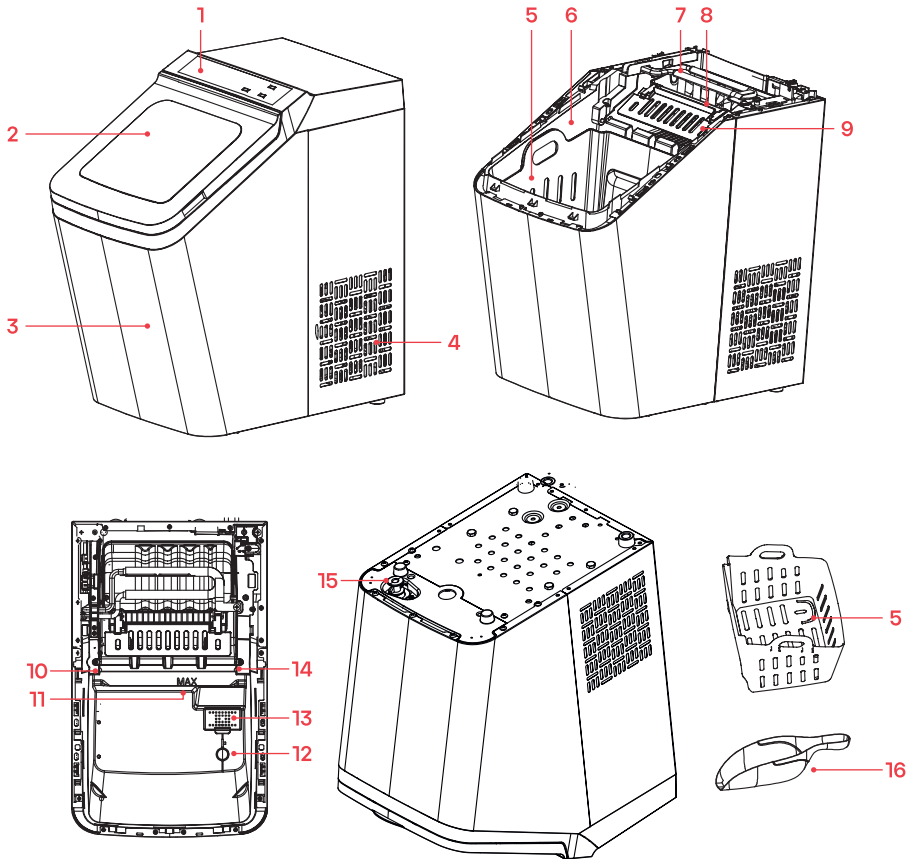
- Always unplug the ice maker before moving it to avoid damaging the refrigerating system.
- Do not attempt to disassemble, repair, modify, or replace any part of the product.
- Do not leave the appliance unattended while in use.
- **WARNING:** Do not use mechanical devices or other means to accelerate defrosting.
- **WARNING:** Do not damage the refrigerant circuit.
- Do not store explosive substances such as aerosol cans with a flammable propellant in this appliance.

## ELECTRICAL DETAILS

- Check that the voltage on the rating plate of your appliance corresponds with your house electricity supply which must be A.C. (Alternating Current).
- Should the fuse in the mains plug require changing, replace it with a fuse of the same rating as originally fitted.
- The power consumption in off mode is 0.3W
- When the appliance is not working, it enters the off mode immediately (0 min).
- **WARNING:** This appliance must be earthed.



## PRODUCT OVERVIEW



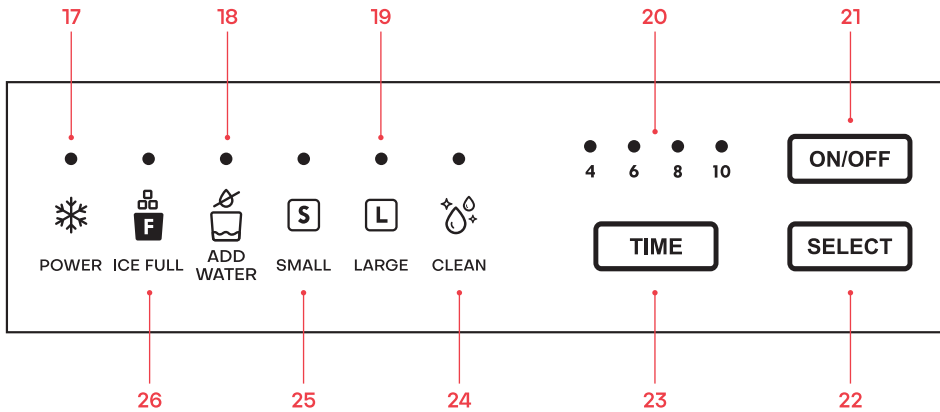
- |                            |                                    |
|----------------------------|------------------------------------|
| 1. Control panel           | 10. Infrared light-receiving diode |
| 2. Lid with viewing window | 11. MAX water level                |
| 3. Main unit               | 12. Drain                          |
| 4. Ventilation             | 13. Water filter                   |
| 5. Ice basket              | 14. Infrared light-emitting diode  |
| 6. Water reservoir         | 15. Drain plug                     |
| 7. Evaporator              | 16. Ice spoon                      |
| 8. Ice tray                |                                    |
| 9. Ice scoop               |                                    |





## PRODUCT OVERVIEW

### Control Panel



- 17. Ice making in progress indicator
- 18. Empty water reservoir indicator
- 19. Large ice cube indicator
- 20. Timer indicators
- 21. On/Off button

- 22. Ice cube size select button
- 23. Timer (Auto Start) button
- 24. Clean indicator
- 25. Small ice cube indicator
- 26. Ice basket full indicator





## BEFORE FIRST USE

Note: There may be a faint smell when using the Ice Maker for the first time but this is quite normal and will fade with use.

Remove all packaging. Use a soft, warm damp cloth to clean the main unit, wash the ice collecting basket and spoon in warm soapy water and dry thoroughly before use (see the Care & Cleaning section of the manual).

## LOCATION

- Ensure that the appliance is used on a firm, flat, level surface with a clearance of 20cm on all sides for sufficient ventilation. The Ice Maker should never exceed an incline angle of 45°.
- **DO NOT** use on surfaces that may be damaged by water spillage.
- The Ice Maker **MUST NOT** be placed close to heat sources such as ovens, heaters and corrosive gases.
- Allow time for fluids in the compressor to settle after the ice maker is moved or transported.
- Before using the ice maker for the first time, wait for 2 hours after the unit has been positioned.
- **DO NOT** overturn the ice maker. If it is overturned accidentally, allow to stand upright for 2 hours before powering it on again.

## USING YOUR ICE MAKER

**IMPORTANT:** If the Ice Maker has been moved from storage for use, it should be allowed to stand for 30 minutes before it is plugged in.

1. Ensure that the drain plug at the bottom of water reservoir is tightly closed.
2. Plug the Ice Maker into the mains outlet, the Ice Making in Progress Indicator flashes.
3. Open the lid, remove the ice basket and fill the reservoir with water.
  - **IMPORTANT:** Only fill the water reservoir with fresh tap water or bottled water.
  - **Note:** Do not fill above the MAX water level mark.





## USING YOUR ICE MAKER

4. Replace the Ice Basket and close the lid.
5. Press the Select button to select the ice size, press the **S** button for small ice, or the **L** button for large ice.
6. Press the ON/OFF button and the Ice Making in Progress Indicator illuminates solidly.
7. The ice-making cycle begins and takes approximately 7-15 minutes, depending on the ambient temperature and water temperature.
8. The ice-making cycle starts with water being pumped into the ice tray situated below the evaporator. Over the next 7-15 minutes ice forms on the evaporator. When this has completed, the ice tray will tilt backwards and the remaining water in the ice tray is drained back into the water reservoir. The ice is then dropped from the evaporator and pushed forward into the Ice Basket by the Ice Scoop. The ice tray will automatically move back into position under the evaporator and the next cycle starts.
9. The Ice Basket Full indicator illuminates when the ice basket is full. Remove ice from the Ice Basket using the Ice Spoon. The Ice Maker will restart automatically after approximately 5 seconds.
10. The Ice Maker will stop automatically if the Empty Water Reservoir indicator illuminates.
11. Remove the Ice Basket, add water to the Water Reservoir then press the ON/OFF button again to restart the ice-making cycle.
12. When your desired amount of ice has been produced, the Ice Maker can be stopped by pressing the ON/OFF button and unplugging the appliance from the mains socket.
13. Transfer the ice to the freezer.
  - **Note:** Depending on the ambient temperature, the ice will last in the basket for up to an 18 hour period.
  - **Note:** We suggest replacing the water every day and emptying the water reservoir when the ice maker is not in constant use.



## TIMER (AUTO START)

The Ice Maker can be set to switch on automatically at a preset time.

1. While the Ice Maker is in standby, press the Timer (Auto Start) button until the indicator of the desired time flashes. 4 hours, 6 hours, 8 hours or 10 hours. The indicator of the chosen time will become still after a few seconds.
  2. Press the Timer (Auto Start) button again to confirm the selected time, the indicator illuminates solidly.
  3. Press the ON/OFF button, the Ice Making in Progress indicator flashes.
  4. The Auto Start function is now activated and will start to count down, when the countdown is complete, the ice maker will switch on automatically.
- Note: To exit from the Auto Start mode at any time, press and hold the Timer (Auto Start) button.

## CARE AND CLEANING

To keep your Ice Maker operating at optimum performance, we recommend running the CLEAN function every week if it is in continuous use.

1. Switch the Ice Maker off using the ON/OFF button, unplug from the mains outlet and allow it to warm up to room temperature.
2. To empty residual water from the ice tray, gently push the ice tray back so that all water drains into the water reservoir.
3. Pull the appliance forward on the work surface until the drain plug overhangs approximately 60mm, unscrew the plug and allow remaining water to drain away into a jug/bowl.
4. Replace the drain plug securely and relocate the appliance back onto the work surface.
5. Fill the water reservoir with clean water, press the Select button until the Clean indicator flashes. Press the ON/OFF button, water will be pumped for approximately 6 minutes.
5. When the Clean function is completed the appliance will go into standby.
6. Pull the appliance forward on the work surface again until the drain





## CARE AND CLEANING

plug overhangs approximately 60mm, open the drain plug and allow the water to drain out.

7. Remove the ice basket.
8. Wipe the ice maker interior with a soft cloth soaked with warm water and vinegar, then using a clean, soft cloth soaked in warm water, wipe away the vinegar .
  - **DO NOT** allow water to run down the exterior of the appliance.
9. Drain away the water again.
10. Wash the ice basket and ice scoop in warm soapy water. Rinse and dry.
11. Clean the exterior of the ice maker with a soft damp cloth. Use a mild detergent, if necessary.
  - **WARNING:** Do not submerge the appliance in water or other liquids.
  - **WARNING:** Do not clean your Ice Maker with any flammable fluids. The fumes may create a fire hazard.

## STORAGE

- **IMPORTANT:** Before storing, clean the appliance using the cleaning instructions in the Care and Cleaning section and allow to dry thoroughly.
- **Note:** If the ice maker is brought in from a cold storage area in wintertime, allow the appliance to warm up to room temperature before using.

## SPARES

Part Number	Description	Qty per product	Features Key Number
05624	Ice collection basket	1	5
05625	Ice scoop	1	16



## TROUBLESHOOTING

Problem	Cause	Solution
<b>Empty water reservoir indicator illuminates</b>	Water reservoir is empty or water level low.	Switch off the Ice Maker, refill the water reservoir and re-start the Ice Maker.
	The water filter in the bottom of the water reservoir is blocked.	Switch of the Ice Maker and clean the filter.
<b>Ice basket full indicator illuminates</b>	Infrared light-emitting diode & light-receiving diode aren't working correctly.	Switch off the Ice Maker and clean any foreign objects on the infrared light-emitting diode & light-receiving diode. Restart the ice maker.
<b>Ice basket full indicator flashes</b>	The Ice Scoop is obstructed.	Remove any ice that is causing obstruction to the Ice Scoop.
<b>The ice maker stops working</b>	The ice tray is not positioned correctly.	Remove ice from the ice tray and press the ON/OFF button to re-start the appliance.
<b>The ice basket is full but the Ice basket full indicator doesn't illuminate</b>	Ice basket full is not detected as the infrared light module may be affected by sunlight.	Unplug the appliance and move it to a place which is not exposed to the sunlight, then plug the appliance and re-start it.
<b>Ice sticks together</b>	The water in the water reservoir is of too low temperature.	Refill the water reservoir with water that ranges between 8°C and 25°C.
<b>The ice-making cycle seems normal but no ice is produced.</b>	The ambient temperature or water temperature is too high	Start the ice-making cycle in an environment with an ambient temperature less than 32°C and fill the water reservoir with cold water.





## TROUBLESHOOTING

Problem	Cause	Solution
<b>Poor ice-making result</b>	Poor heat dissipation	Leave a 20cm clearance on all sides of the appliance for sufficient ventilation.
	The water temperature is too high.	Refill the water reservoir with water that ranges between 8°C and 25°C.
	The ambient temperature is too high	Operate the ice maker in an environment with an ambient temperature between 10°C and 32°C.

## CONTACT US

If you are having a problem with your appliance, please contact our Helpline, as we are more likely to be able to help than the store you purchased the item from. Please have the product name, model number and serial number to hand when you contact us to help us deal with your enquiry quicker.

email: [hello@morphyrichards.co.uk](mailto:hello@morphyrichards.co.uk)

[www.morphyrichards.co.uk](http://www.morphyrichards.co.uk)

## PRODUCT RECYCLING



For electrical products sold within the European Community, at the end of the electrical products useful life, it should not be disposed of with household waste.

Please recycle where facilities exist.

Check with your Local Authority or retailer for recycling advice in your country.



## REGISTERING YOUR 3 YEAR GUARANTEE

Your standard 2 year guarantee is extended for an additional 1 year when you register the product within 28 days of purchase with Morphy Richards. If you do not register the product with Morphy Richards within 28 days, your product is guaranteed for 2 years.



To validate your 3 year guarantee, scan the QR code or register online at [www.morphyrichards.co.uk](http://www.morphyrichards.co.uk)

N.B. Each qualifying product needs to be registered with Morphy Richards individually. Please note that the 2 year guarantee is only available in the UK. Please refer to the 2 year guarantee for more information.

## YOUR 2 YEAR GUARANTEE

It is important to retain the retailer's receipt as proof of purchase. Staple your receipt to the back cover for future reference.

Please quote the following information if the product develops a fault. These numbers can be found on the base of the product.

**Model no.**

**Serial no.**

All Morphy Richards products are individually tested before leaving the factory. In the unlikely event of any appliance proving to be faulty within 28 days of purchase, it should be returned to the place of purchase for it to be replaced. If the fault develops after 28 days and within 24 months of original purchase, you should contact the Helpline quoting Model number and Serial number on the product, or write to Morphy Richards at the address shown. You may be asked to return a copy of proof of purchase.

Subject to the exclusions set out on the next page (see Exclusions), the faulty appliance will then be repaired or replaced as appropriate and dispatched usually within 7 working days of receipt.

If, for any reason, this item is replaced or repaired during the 2 year





## REGISTERING YOUR 3 YEAR GUARANTEE

guarantee period, the guarantee on the new item will be calculated from the original purchase date. Therefore it is vital to retain your original till receipt or invoice to indicate the date of initial purchase.

To qualify for the 2 year guarantee, the appliance must have been used according to the instructions supplied.

The appliance is intended for domestic use only. Misuse or use for commercial or any other purpose will render the guarantee invalid.

### Exclusions

Morphy Richards shall not be liable to replace or repair the goods under the terms of the guarantee where:

1. The fault has been caused or is attributable to accidental use, misuse, negligent use or used contrary to the manufacturer's recommendations or where the fault has been caused by power surges or damage caused in transit.
2. The appliance has been used on a voltage supply other than that stamped on the products.
3. Repairs have been attempted by persons other than our service staff (or authorised dealer).
4. The appliance has been used for hire purposes or non domestic use.
5. The appliance is second hand or refurbished.
6. Morphy Richards reserves the right not to carry out any type of servicing under the guarantee at its discretion.

This guarantee does not confer any rights other than those expressly set out above and does not cover any claims for consequential loss or damage. This guarantee is offered as an additional benefit and does not affect your statutory rights as a consumer. Morphy Richards products are intended for household use only. See usage limitations within the location safety instructions.

### Disclaimer

Morphy Richards has a policy of continuous improvement in product quality and design. The company, therefore reserves the right to change the specification of its models at any time.





FP451501MUK Rev1

# morphy richards



@morphyrichardsuk #loveyourmorphy

[morphyrichards.co.uk](http://morphyrichards.co.uk)

**Morphy Richards**  
9 Cabot Lane, Poole, Dorset, BH17 7BY, UK

