



morphy richards

**3 Year
Guarantee***

*Upon registering your product
at morphyrichards.co.uk

HEATFLUX

1.5kW / 2kW / 2.5kW

Oil Filled Radiator



This product is only suitable
for well insulated spaces
or occasional use.

Model No.
827501, 827502,
827751, 827752,
827876, 827877

User Manual

Please read and keep these instructions for future use





HEALTH AND SAFETY


PLEASE READ THE FOLLOWING INSTRUCTIONS CAREFULLY BEFORE USING THE APPLIANCE.

1. This appliance can be used by children aged from 8 years and above and persons with reduced physical, sensory or mental capabilities or lack of experience and knowledge if they have been given supervision or instruction concerning use of the appliance in a safe way and understand the hazards involved. Children shall not play with the appliance. Cleaning and user maintenance shall not be made by children without supervision.
2. Children of less than 3 years should be kept away from the appliance unless they are continuously supervised. Children aged from 3 years and less than 8 years shall only switch on/off the appliance provided that it has been placed or installed in its intended normal operating position and they have been given supervision or instruction concerning use of the appliance in a



HEALTH AND SAFETY

safe way and understand the hazards involved. Children aged from 3 years and less than 8 years shall not plug in, regulate and clean the appliance or perform user maintenance.

3. **CAUTION** - Some parts of this product can become very hot and can cause burns. Particular attention has to be given where children and vulnerable people are present.
4. If the supply cord is damaged, it must be replaced by the manufacturer, its service agent or similarly qualified persons in order to avoid a hazard.
5. **WARNING:** In order to avoid overheating, do not cover the heater. The meaning of the icon  is "DO NOT COVER".
6. The heater must not be located directly below a socket-outlet.
7. Do not use this heater in the immediate surroundings of a bath, shower or swimming pool.



HEALTH AND SAFETY

8. This appliance is intended for household use only.
9. **WARNING:** Do not use this heater in small rooms when they are occupied by persons not capable of leaving the room on their own, unless constant supervision is provided.
10. This heater is filled with a precise quantity of special oil. Repairs requiring opening of the oil container are only to be made by the manufacturer or their service agent who should be contacted if there is an oil leakage. Regulations concerning the disposal of oil when disposing of the appliance must be followed.
11. Do not use this heater if it has been dropped.
12. Do not use if there are visible signs of damage to the heater.
13. Use this heater on a horizontal and stable surface, or fix it to the wall, if applicable.



HEALTH AND SAFETY

14. **WARNING:** To reduce the risk of fire, keep textiles, curtains, or any other flammable material a minimum distance of 1 metre from the air outlet.
15. Do not attempt to repair, disassemble or modify the appliance. There are no user-serviceable parts inside.
16. This appliance is not intended to be operated on an extension cable or by means of an external timer or separate remote control system.
17. Disconnect from mains when not in use or when moving or cleaning.
18. The heater is hot when in use. To avoid burns, do not let bare skin touch the hot surface.



HEALTH AND SAFETY

MAINS CABLE

- Do not let the mains cable run across an open space e.g. between a low socket and the appliance.
- The mains cable should reach from the socket to the product without straining the connections.

OTHER SAFETY CONSIDERATIONS

- Only use for its intended purpose.
- Do not spray insecticides or flammable sprays around the product.

PERSONAL SAFETY

- Do not touch the mains cable or plug with wet hands.
- Do not pull the mains cable when unplugging.
- **WARNING:** Do not wrap the cable around the main body of the appliance during or after use.



CAUTION!
HOT
SURFACE!

PLEASE BE AWARE OF HOT SURFACES.
HANDLE WITH CARE.

Treating scalds

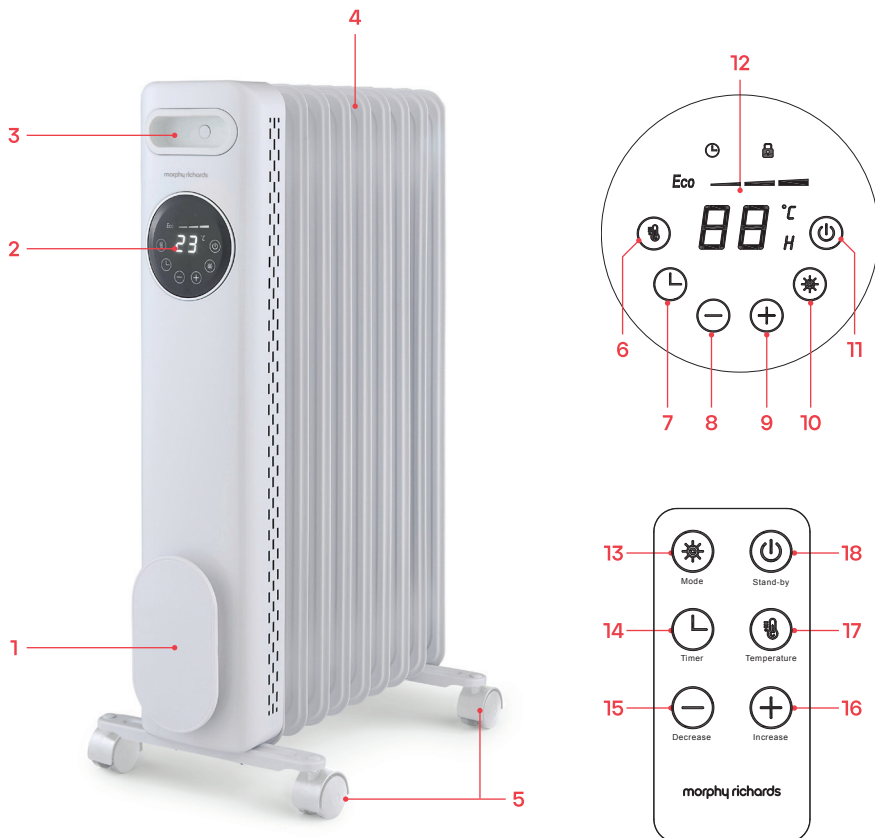
- Run cold water over the affected area immediately.
- Do not stop to remove clothing.
- Seek medical advice quickly.

ELECTRICAL DETAILS

- Make sure that the power voltage used is consistent with the voltage specified on the rating plate of the device.
- Should the fuse in the mains plug require changing, replace it with one of the same rating as originally fitted.
- **WARNING: This appliance must be earthed.**



PRODUCT OVERVIEW



1. Cord storage
2. Control panel & display
3. Handle
4. Heating fins
5. Castors

Digital Display

6. Temperature set button
7. Timer button
8. Temperature/time decrease button
9. Temperature/time increase button
10. Mode button
11. Standby button
12. Display

Remote Control

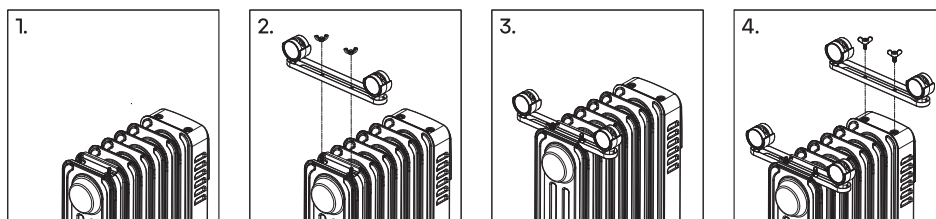
13. Mode button
14. Timer button
15. Temperature/time decrease button
16. Temperature/time increase button
17. Temperature set button
18. Standby button



BEFORE FIRST USE

- Remove all packaging and stand the heater on a firm, level surface before plugging in the appliance.
- Ensure that textiles, curtains, or any other flammable material is a minimum distance of 1 metre from the heater.

ASSEMBLY INSTRUCTIONS



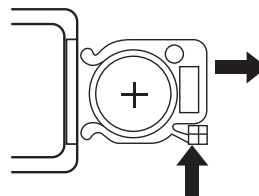
1. Turn the radiator upside-down (see Fig 1).
2. Fit the rear wheels assembly onto the fixed U-bolt, then screw the two wing nuts tightly onto the bolts. (see Fig.2 - 3).
3. Attach the front wheels assembly at the bottom of front panel using two screws. (see Fig. 4).
4. Move the appliance using the integrated handle.

WARNING: The radiator should be operated in an upright position with the wheel assemblies attached. Using the radiator in any position other than upright, could create a hazardous situation.

REMOTE CONTROL

The remote control works with 1 button cell battery CR2025, 3 volts. Used batteries should be disposed of safely.

1. Open the battery cover at the bottom of the remote control
2. Check the polarity of the battery and install it into the battery cover.
3. Refit the battery cover on to the remote control.



WARNING: Danger of explosion if batteries are incorrectly installed. Replace the battery only with the same type of battery.

WARNING: Keep the remote control and battery out of reach of children.

BATTERY WARNING

KEEP OUT OF REACH OF CHILDREN
Swallowing can lead to chemical burns, perforation of soft tissue, and death. Severe burns can occur within 2 hours of ingestion. Seek medical attention immediately.



KNOW YOUR RADIATOR

This manual is compatible to 1.5kW, 2.0kW and 2.5kW products.

- 1.5kW product has 7 heating fins.
- 2.0kW product has 9 heating fins.
- 2.5kW product has 11 heating fins.



USING YOUR RADIATOR

Note: Oil filled radiators can make 'crackling, popping or clicking' sounds as they heat up. This is completely normal and is caused by the expansion of the thermal fluid inside them.

- When the radiator is plugged in, the Standby button and Timer button will illuminate. The appliance is now in stand-by mode.

Note: A beep is emitted every time a button is pressed.

Mode Button

- Press the mode button to cycle from Eco mode → High Power → Medium Power → Low Power

Eco Mode

- Press the mode button until ECO illuminates on the display. If a temperature is not selected, the default temperature is 23°C.
- The power level will adjust automatically when the room is approaching the set temperature.

Setting the Temperature

1. Press the Mode button to select the Power setting.
2. To set the temperature, press the Temperature set button, the temperature will flash on the display.
3. Press the temperature/timer increase + or temperature/timer decrease - button to set the desired temperature. The display will stop flashing and the set temperature remains on the display.
4. When the room temperature reaches the set temperature, the radiator will cycle on and off automatically to maintain the set temperature.

Note: The higher the power setting the quicker your desired temperature will be reached but the power consumption will be higher. A lower power setting is recommended if the radiator is to be used for an extended period of time.



USING YOUR RADIATOR

Timer - Auto ON

Note: This function should only be set if you require the radiator to turn on automatically after a certain period of time (1 to 24 hours from the time the function is set).

1. Press the Timer button, the hour digit will flash.
2. Press the temperature/timer increase + or temperature/timer decrease - button to set the Auto ON period (between 1 and 24 hours). The function will activate when the hour digit stops flashing.
3. The countdown time will show on the display; the radiator turns ON automatically at the end of the delay period.

Timer - Auto OFF

Note: This function should only be set if you require the radiator to turn off automatically after a certain period of time (1 to 24 hours from the time the function is set).

1. While the radiator is operating, press the Timer button, the hour digit will flash.
2. Press the temperature/timer increase + or temperature/timer decrease - button to set the Auto OFF period (between 1 and 24 hours). The function will activate when the hour digit stops flashing.
3. The countdown times and the set temperature will show alternately on the display.
4. The radiator switches off automatically at the end of the set operating period.

IMPORTANT: When using timer modes, consideration should be given to the fact that the radiator may be operational whilst unattended. Always follow the safety instructions provided.



USING YOUR RADIATOR

Child Lock

1. To activate the child lock, press and hold the Standby button and the Mode button together for 3 seconds. A beep will be heard.
2. To deactivate the child lock press and hold the Standby button and the Mode button together for 3 seconds. A beep will be heard.

Switching the Radiator Off

- Press the Standby button until sleep mode is selected and the control panel screen goes off.

Silent Mode Setting

- To turn off the beep each time the buttons are pressed, press and hold the + and - buttons together for 3 seconds.
- To reactivate the beep sound, press the + and - buttons together again for 3 seconds.

TIP-OVER PROTECTION

This heater is protected with a safety switch that turns off the appliance automatically if the heater falls over or is at an excessive angle from vertical. This helps prevent accidents, and the heater will resume operation when it is put back upright.

OVERHEAT PROTECTION

This heater is protected with an overheat protection that switches off the appliance automatically in case of severe overheating. In the unlikely case this should happen, unplug the appliance, wait about 30 minutes for it to cool and remove any possible cause of overheating.





OVERHEAT PROTECTION

For example, check if there is something covering the heater. Check for damage to the appliance, the cord and the plug. If there is no damage, plug the unit back in and switch it on as described above.

CARE AND CLEANING

The appliance should be regularly cleaned when in use in accordance with the following instructions:

- Unplug the radiator and let it cool completely before cleaning.
- Clean the fins and the control panel with a damp lint-free soft cloth.
- If dust is present within the slits of the appliance, it is recommended to remove them through with a vacuum cleaner.
- Do not use harsh detergents, chemical cleaners or solvents as they may damage the appliance.

STORAGE

Out of season, we recommend disassembling the radiator and storing in its original packaging in a dry, clean space, out of the reach of children.



TROUBLESHOOTING

Problem	Solution
No power or not switching on.	Check the fuse and try a new fuse with the same rating.
	Try a different appliance in the socket as it may be the socket that is at fault.
Burning smell.	It is normal to experience an odour from the heater on first use and will dissipate over time.
	Ensure textiles, curtains, or any other flammable material is a minimum distance of 1 metre from the heater.
Cutting out.	Something may be covering the heater. Remove any obstructions. Unplug the heater. Wait 30 minutes before plugging it back in.
	Tip-over protection has been activated. Ensure your heater is placed on a firm, flat and level surface
Noisy.	Check for obstructions at the air inlet and air outlet.
Not enough heat.	Select a higher temperature or use the High heat mode.
Remote control not working.	Out of range. Move closer and aim directly at the control panel.
	Change the battery. Type CR2025
Tripping electrics.	Try using a different socket.
	Ensure there are no other appliances being used on the same set of sockets as the heater.

SPARE PARTS

Part Number	Description	Qty per Product	Key Number
33034	Remote Control	1	N/A





POWER CONSUMPTION – 1.5kW OIL FILLED RADIATOR

Model No:
827501 / 827502
1.5kW Oil Filled Radiator

Item	Symbol	Value	Unit
Heat output			
Nominal heat output	P _{nom}	1.500	kW
Minimum heat output (indicative)	P _{min}	0.600	kW
Maximum continuous heat output	P _{max,c}	1.500	kW
Power consumption			
In off mode	P _o	0.00	W
In standby mode	P _{sm}	0.17	W
In idle mode	P _{idle}	0.23	W
In network standby	P _{ns,m}	N/A	W
Standby mode with display information or status			No
Seasonal space heating energy efficiency in active mode	$\eta_{s,on}$	91.5	%

Item	Unit
Type of heat output/room temperature control (select one)	
Single stage heat output and no room temperature control	No
Two or more manual stages, no room temperature control	No
With mechanic thermostat room temperature control	No
With electronic room temperature control	Yes
Electronic room temperature control plus day timer	No
Electronic room temperature control plus week timer	No
Other control options (multiple selections possible)	
Room temperature control, with presence detection	No
Room temperature control, with open window detection	No
Distance control option	No
Adaptive start control	No
Working time limitation	Yes
Black bulb sensor	No
Self-learning functionality	No
Control accuracy	No



POWER CONSUMPTION – 2kW OIL FILLED RADIATOR

Model No:
827751 / 827752
2kW Oil Filled Radiator

Item	Symbol	Value	Unit
Heat output			
Nominal heat output	P _{nom}	2.000	kW
Minimum heat output (indicative)	P _{min}	0.800	kW
Maximum continuous heat output	P _{max,c}	2.000	kW
Power consumption			
In off mode	P _o	0.00	W
In standby mode	P _{sm}	0.17	W
In idle mode	P _{idle}	0.23	W
In network standby	P _{ns,m}	N/A	W
Standby mode with display information or status			No
Seasonal space heating energy efficiency in active mode	$\eta_{s,on}$	91.5	%

Item	Unit
Type of heat output/room temperature control (select one)	
Single stage heat output and no room temperature control	No
Two or more manual stages, no room temperature control	No
With mechanic thermostat room temperature control	No
With electronic room temperature control	Yes
Electronic room temperature control plus day timer	No
Electronic room temperature control plus week timer	No
Other control options (multiple selections possible)	
Room temperature control, with presence detection	No
Room temperature control, with open window detection	No
Distance control option	No
Adaptive start control	No
Working time limitation	Yes
Black bulb sensor	No
Self-learning functionality	No
Control accuracy	No



POWER CONSUMPTION – 2.5kW OIL FILLED RADIATOR

Model No:
827876 / 827877
2.5kW Oil Filled Radiator

Item	Symbol	Value	Unit
Heat output			
Nominal heat output	P _{nom}	2.500	kW
Minimum heat output (indicative)	P _{min}	1.000	kW
Maximum continuous heat output	P _{max,c}	2.500	kW
Power consumption			
In off mode	P _o	0.00	W
In standby mode	P _{sm}	0.17	W
In idle mode	P _{idle}	0.23	W
In network standby	P _{ns,m}	N/A	W
Standby mode with display information or status			No
Seasonal space heating energy efficiency in active mode	$\eta_{s,on}$	91.5	%

Item	Unit
Type of heat output/room temperature control (select one)	
Single stage heat output and no room temperature control	No
Two or more manual stages, no room temperature control	No
With mechanic thermostat room temperature control	No
With electronic room temperature control	Yes
Electronic room temperature control plus day timer	No
Electronic room temperature control plus week timer	No
Other control options (multiple selections possible)	
Room temperature control, with presence detection	No
Room temperature control, with open window detection	No
Distance control option	No
Adaptive start control	No
Working time limitation	Yes
Black bulb sensor	No
Self-learning functionality	No
Control accuracy	No



If you are having a problem with your appliance, please contact our Helpline, as we are more likely to be able to help than the store you purchased the item from. Please have the product name, model number and serial number to hand when you contact us to help us deal with your enquiry quicker.

email: hello@morphyrichards.co.uk

www.morphyrichards.co.uk



For electrical products sold within the European Community, at the end of the electrical products useful life, it should not be disposed of with household waste.

Please recycle where facilities exist.

Check with your Local Authority or retailer for recycling advice in your country.



[illegible]



NOTES

[illegible]



NOTES

[illegible]



REGISTERING YOUR 3 YEAR GUARANTEE

Your standard 2 year guarantee is extended for an additional 1 year when you register the product within 28 days of purchase with Morphy Richards. If you do not register the product with Morphy Richards within 28 days, your product is guaranteed for 2 years.



To validate your 3 year guarantee,
scan the QR code or register online
at www.morphyrichards.co.uk

N.B. Each qualifying product needs to be registered with Morphy Richards individually. Please note that the 2 year guarantee is only available in the UK. Please refer to the 2 year guarantee for more information.

YOUR 2 YEAR GUARANTEE

It is important to retain the retailer's receipt as proof of purchase. Staple your receipt to the back cover for future reference.

Please quote the following information if the product develops a fault. These numbers can be found on the base of the product.

Model no.

Serial no.

All Morphy Richards products are individually tested before leaving the factory. In the unlikely event of any appliance proving to be faulty within 28 days of purchase, it should be returned to the place of purchase for it to be replaced. If the fault develops after 28 days and within 24 months of original purchase, you should contact the Helpline quoting Model number and Serial number on the product, or write to Morphy Richards at the address shown. You may be asked to return a copy of proof of purchase.

Subject to the exclusions set out on the next page (see Exclusions), the faulty appliance will then be repaired or replaced as appropriate and dispatched usually within 7 working days of receipt.

If, for any reason, this item is replaced or repaired during the 2 year





REGISTERING YOUR 3 YEAR GUARANTEE

guarantee period, the guarantee on the new item will be calculated from the original purchase date. Therefore it is vital to retain your original till receipt or invoice to indicate the date of initial purchase.

To qualify for the 2 year guarantee, the appliance must have been used according to the instructions supplied.

The appliance is intended for domestic use only. Misuse or use for commercial or any other purpose will render the guarantee invalid.

Exclusions

Morphy Richards shall not be liable to replace or repair the goods under the terms of the guarantee where:

1. The fault has been caused or is attributable to accidental use, misuse, negligent use or used contrary to the manufacturer's recommendations or where the fault has been caused by power surges or damage caused in transit.
2. The appliance has been used on a voltage supply other than that stamped on the products.
3. Repairs have been attempted by persons other than our service staff (or authorised dealer).
4. The appliance has been used for hire purposes or non domestic use.
5. The appliance is second hand or refurbished.
6. Morphy Richards reserves the right not to carry out any type of servicing under the guarantee at its discretion.

This guarantee does not confer any rights other than those expressly set out above and does not cover any claims for consequential loss or damage. This guarantee is offered as an additional benefit and does not affect your statutory rights as a consumer. Morphy Richards products are intended for household use only. See usage limitations within the location safety instructions.

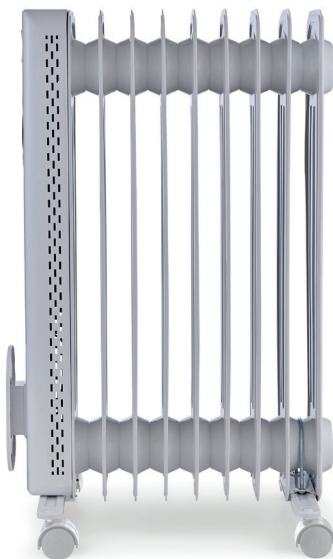
Disclaimer

Morphy Richards has a policy of continuous improvement in product quality and design. The company, therefore reserves the right to change the specification of its models at any time.



AT827501MUK Rev1

morphy richards



@morphyrichardsuk #loveyourmorphy

[morphyrichards.co.uk](https://www.morphyrichards.co.uk)

Morphy Richards

9 Cabot Lane, Poole, Dorset, BH17 7BY, UK

