

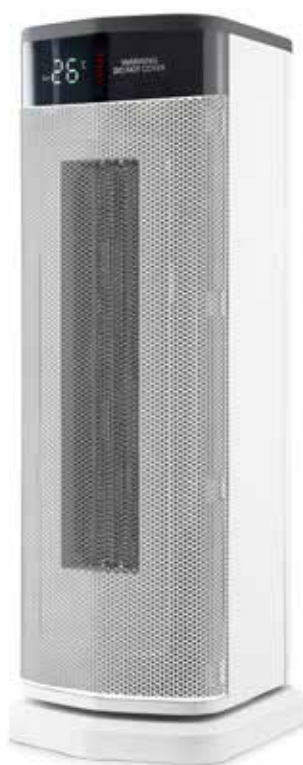
# morphy richards

**3 Year**  
Guarantee\*

\*Upon registering your product  
at [morphyrichards.co.uk](http://morphyrichards.co.uk)

HEATFLUX

## 2kW Digital Ceramic Tower Fan Heater with Remote Control



Model No.

**825401**

**825402**

## User Manual

Please read and keep these instructions for future use

The use of any electrical appliance requires the following common sense safety rules.

**Please read these instructions carefully before using the product.**

- **WARNING:** Disconnect from the mains supply before carrying out any routine maintenance.
- **WARNING:** Misuse of the appliance could cause personal injury.
- This appliance can be used by children aged from 8 years and above and persons with reduced physical, sensory or mental capabilities, or lack of experience and knowledge, if they have been given supervision or instruction concerning the use of the appliance in a safe way and understand the hazards involved.
- Children shall not play with the appliance.
- Cleaning and user maintenance shall not be made by children unless they are older than 8 years and supervised.
- Keep the appliance and its cord out of reach of children less than 8 years.

- If the supply cable is damaged, it must be replaced by the manufacturer, its service agent or similarly qualified persons in order to avoid a hazard.
- Do not use the appliance near or below combustible material such as curtains.
- This appliance is not intended to be operated on an extension cable or by means of an external timer or separate remote control system.
- This appliance is intended for household use only. It is not suitable for use in staff kitchen areas in shops, offices and other commercial environments.
- **WARNING:** Some parts of this product can become very hot and cause burns. Particular attention has to be given where children and vulnerable people are present.

### MAINS CABLE

- Do not let the mains cable run across an open space e.g. between a low socket and a table.
- Do not place the extension cord in a position where it can be pulled by children or animals or tripped over.
- The mains cable should reach from the socket to the product without straining the connections.

### OTHER SAFETY CONSIDERATIONS

- Only use for its intended purpose.
- It is strictly forbidden to insert foreign objects such as wooden and metal sticks into the heater.
- Do not spray insecticides or flammable sprays around the product.

### PERSONAL SAFETY

- Do watch your appliance during use.
- Do not touch the mains cable or plug with wet hands.
- Do not pull the mains cable when unplugging.
- Keep hands, hair and clothing away from the appliance while in operation, to prevent personal injury and/or damage to the appliance.
- In the unlikely event technical problems develop, stop using the

product immediately and seek advice from the manufacturer.

- Do not use this heater in the immediate surroundings of a bath, a shower or a swimming pool.
- It is strictly forbidden to insert foreign objects such as wooden and metal sticks into the air inlet and outlet.
- Do not spray insecticides or flammable sprays around the product.
- **WARNING:** Do not touch hot parts during or after use, use the handle.
- **WARNING:** Do not wrap the cable around the main body of the appliance during or after use.

### LOCATION

- To reduce the risk of fire, keep textiles, curtains, or any other flammable material a minimum distance of 1 m from the appliance.
- Do not cover or place any objects on the heater.
- The heater must not be located directly below a socket outlet.
- **WARNING:** Do not use this heater in small rooms when they are occupied by persons not capable of leaving the room on their own, unless constant supervision is provided.



**CAUTION!  
HOT  
SURFACE!**

**PLEASE BE AWARE OF HOT SURFACES.  
HANDLE WITH CARE.**

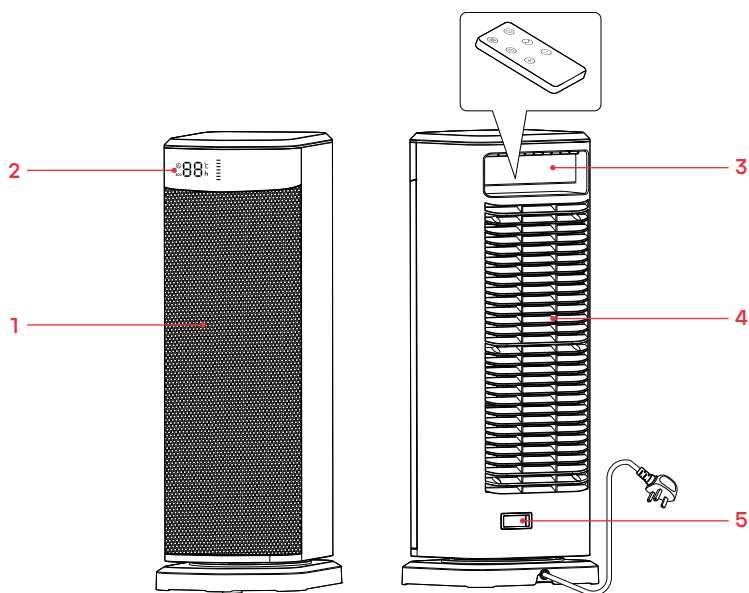
**Treating scalds**

- Run cold water over the affected area immediately.
- Do not stop to remove clothing.
- Seek medical advice quickly.

## HEALTH AND SAFETY

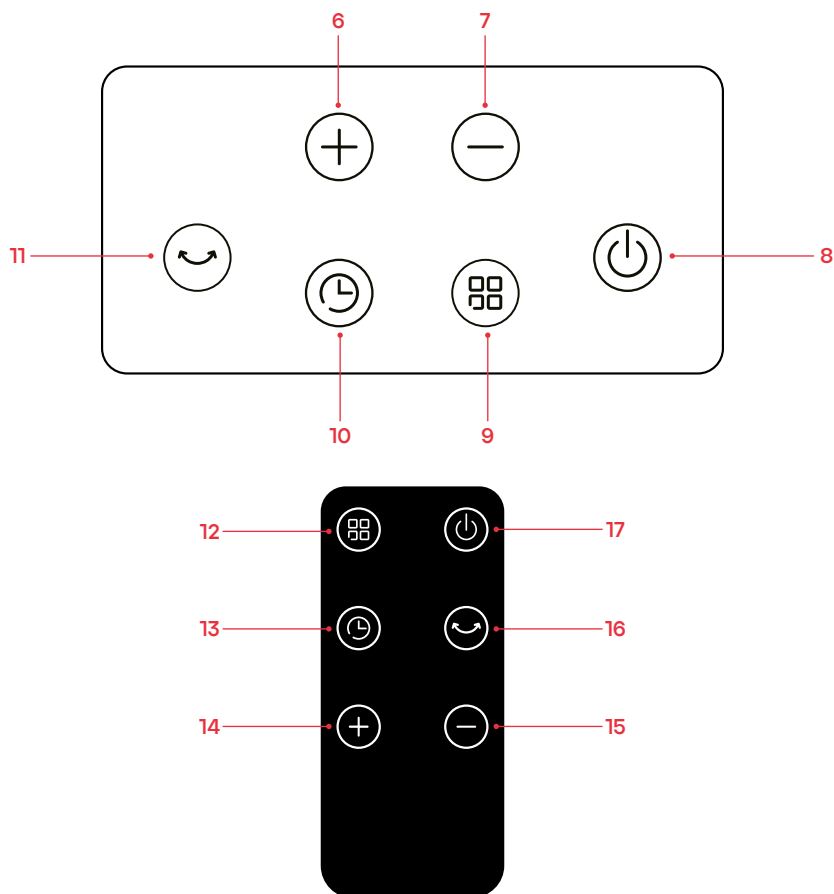
- Make sure that the power voltage used is consistent with the voltage specified on the rating plate of the device.
- Should the fuse in the mains plug require changing, replace it with one of the same rating as originally fitted.
- The power consumption in standby mode is 0.36w (with plug connected).
- The power consumption in off mode is 0w (with plug disconnected).
- The period after which the equipment reaches automatic off mode is less than 1 minute.
- **WARNING: This appliance must be earthed.**

## PRODUCT OVERVIEW



- |                              |                        |
|------------------------------|------------------------|
| 1. Heat Outlet               | 4. Air Inlet           |
| 2. Display and Control panel | 5. Power ON/OFF Switch |
| 3. Handle                    |                        |

## OPERATING AND DISPLAY PANELS



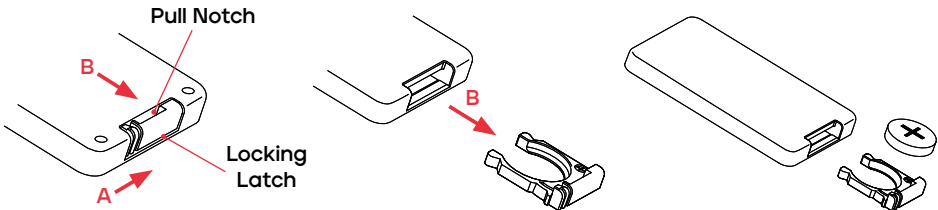
- |                                      |  |
|--------------------------------------|--|
| 6. Temperature/Timer Increase Button | 13. Remote Control Timer Button                      |
| 7. Temperature/Timer Decrease Button | 14. Remote Control Temperature/Timer Increase Button |
| 8. Power ON/OFF Button               | 15. Remote Control Temperature/Timer Decrease Button |
| 9. Mode Button                       | 16. Remote Control Oscillate Button                  |
| 10. Timer Button                     | 17. Remote Control Power ON/OFF Button               |
| 11. Oscillate Button                 |  |
| 12. Remote Control Mode Button       |  |

## BEFORE FIRST USE

- Remove all packaging and stand the heater on a firm, level surface.
- Ensure that textiles, curtains, or any other flammable material is a minimum distance of 1 metre from the heater.

## USING THE REMOTE CONTROL

- The remote control works with 1 button cell battery CR2025, 3 volts. Used batteries should be disposed of safely.
- Open the battery cover at the bottom of the remote control,
- Check the polarity of the battery and install it into the battery cover.
- Refit the battery cover on to the remote control.



- **WARNING:** Danger of explosion if batteries are incorrectly installed. Replace the battery only with the same type of battery.
- **WARNING:** Keep the remote control and battery out of reach of children.

<p><b>BATTERY WARNING</b></p> <p>KEEP OUT OF REACH OF CHILDREN Swallowing can lead to chemical burns, perforation of soft tissue, and death. Severe burns can occur within 2 hours of ingestion. Seek medical attention immediately.</p>		
--	--	--



## USING YOUR HEATER

**WARNING:** Do not cover or place any objects on the heater. Keep textiles, curtains, or any other flammable material a minimum distance of 1 metre from the heater.

**Note:** As with all new electric heating elements, your heater will emit a 'new' smell when it is first switched on. This is quite normal and not a cause for concern. It will dissipate with use.

- Turn on power to the heater by pressing the Power ON/OFF switch (5) located on the back of the product. The heater will beep and the display panel shows --. It is now in Standby.
- Press the ON/OFF button on the remote control (17) or the control panel (8). The heater will beep again, the display panel will show **HI** and default to the High-Heat mode, the indicator light will illuminate red.
- Press the ON/OFF button again, to turn the heater off. It will blow cool/room temperature air for 15 seconds to cool down its internal components. At the same time, the display screen will countdown before stopping.

## MODES

- Press the Mode button (9) to switch between modes:  
High Heat (HI) → Low Heat (LO) → ECO Mode → Cool (room temperature) → High Heat (HI), and so on.

### HEAT MODES

- The selected heat level, HI or LO will show on the display panel and the indicator light will illuminate red.

### ECO MODE

- When ECO mode is selected the display panel shows the temperature that was previously set.
- Press the + or - button to adjust to your desired temperature. The temperature range is 15°C to 35°C and adjusts in 1°C increments.

## MODES

- While setting the temperature, the °C icon will flash. If a button is not pressed for 3 seconds, the °C icon will remain lit and the chosen temperature is confirmed.
- The heater is thermostatically controlled. When the room temperature reaches the desired level, it stops blowing warm air.
- Every 5 minutes, the fan will activate for 30 seconds to promote air circulation. If the temperature drops below the set level, it resumes blowing warm air.

## TIMER SETTING

- While the heater is operating, press the Timer button (10).
- Then press the + or - to set the time. (The setting range is from 0h to 24h).
- While setting the timer, the h icon will flash. If a button is not pressed for 3 seconds, the auto-off setting is complete, the h icon will remain lit and countdown starts.
- The heater will stop automatically when the countdown is complete.

## OSCILLATING FUNCTION

- To turn on the oscillating function, press the Oscillating button (11). To turn off the oscillating function, press the Oscillating button again.

## MEMORY FUNCTION

- The heater recalls the last set temperature, mode and 24 hour auto-off function setting used. The next time it is used, the heater will operate in the last setting used.
- However, after it is unplugged, knocked over or turned off using the Power ON/OFF switch (5) at the back of the heater, it will revert to the default setting.

## LIGHT ON/OFF FUNCTION

**Note:** The indicator lights and display screen (2) turn on by default.

- Press the Mode button (9) for 3 seconds to turn off the display screen and reduce the brightness of the indicator light by 50%.


**Note:** This function can only be operated via the control panel, it cannot be set using the remote control.

## MODES

### SETTING THE 24-HOUR AUTO OFF FUNCTION

**Note:** The 24-hour Auto-OFF Function can only be set while the heater is in standby.

**Note:** This function can only be operated via the control panel, it cannot be set using the remote control.

- Press and hold the button Timer button (10) for 3 seconds while the heater is in standby, the heater will start and the  icon will illuminate and stay ON until the heater turns off automatically after running for 24 hours.
- To turn off the heater manually, press and hold the Timer button for 3 seconds.
- **Note:** This feature does not switch ON by default. However, if this was the last function used the memory function will recall it. Also, after the heater is unplugged, knocked over or turned off using the Power ON/OFF switch at the back of the heater, it will revert to the default setting.

### TIP-OVER PROTECTION

This heater is protected with a safety switch that turns off the appliance automatically if the heater falls over or is at an excessive angle from horizontal. This helps to prevent accidents. The heater will resume operation when it is returned to a horizontal position.

### OVERHEAT PROTECTION

- This heater is protected with an overheat protection function. It will switch off the appliance automatically in case of severe overheating.
- Should this happen, unplug the appliance, wait about 15 minutes for it to cool and remove any possible cause of overheating, eg. something covering the heater.
- Check for damage to the appliance, the cord and the plug. If there is no damage, plug the unit back in and switch it on as described above.

## CARE AND CLEANING

- Before cleaning and maintaining, the heater **MUST** be switched off and the plug disconnected from the mains outlet.
- To clean the main body and front grille, wipe using a damp cloth with a little neutral detergent. Do not use thinners, corrosive detergent or solvent.
- Do not immerse the heater in water.
- Dry using a soft cloth, the heater **MUST** be thoroughly dried before using again.
- To store your product out of season, we recommend using the original box or similar size box, in a clean, dry place.

Problem	Solution
<b>No power or not switching on.</b>	Check the fuse and try a new fuse with the same rating.
	Try a different appliance in the socket as it may be the socket that is at fault.
	On/off switch at the back of the heater hasn't been switched on.
<b>Burning smell.</b>	It is normal to experience an odour from the heater on first use and will dissipate over time.
	Ensure textiles, curtains, or any other flammable material is a minimum distance of 1 metre from the heater.
<b>Cutting Out.</b>	Something may be covering the heater. Remove any obstructions. Unplug the heater. Wait 10 minutes before plugging it back in.
	The set temperature may be lower than the ambient room temperature. Increase the temperature to higher than ambient.
	Tip-over protection has been activated. Ensure your heater is placed on a firm, flat and level surface.
<b>Noisy.</b>	Check for obstructions at the air inlet and air outlet.
<b>Not oscillation.</b>	Remove any obstructions, ensuring a minimum distance of 90cm from the heater.
<b>Not enough heat.</b>	Low heat or Fan only mode is set. Select a higher temperature or use the High heat mode.
	The room is too large to heat. Recommended room size up to 20m <sup>2</sup> .

## TROUBLESHOOTING

<b>Remote Control not working.</b>	Ensure the plastic tab has been removed from the remote control before first use.
	Out of range. Move closer and aim at the front of the heater.
	Change the battery. Type CR2025.
<b>Tripping Electrics.</b>	Try using a different socket.
	Ensure there are no other appliances being used on the same set of sockets as the heater.
<b>Error Code E1 and E2</b>	Contact Customer Service.

## SPARE PARTS

Part Number	Description	Qty per Product	Key Number
33033	Remote Control	1	N/A

## CONTACT US

If you are having a problem with your appliance, please contact our Helpline, as we are more likely to be able to help than the store you purchased the item from. Please have the product name, model number and serial number to hand when you contact us to help us deal with your enquiry quicker.

email: [hello@morphyrichards.co.uk](mailto:hello@morphyrichards.co.uk)

[www.morphyrichards.co.uk](http://www.morphyrichards.co.uk)

## PRODUCT RECYCLING



For electrical products sold within the European Community, at the end of the electrical products useful life, it should not be disposed of with household waste.

Please recycle where facilities exist.

Check with your Local Authority or retailer for recycling advice in your country.

NOTES



NOTES

[illegible]

## REGISTERING YOUR 3 YEAR GUARANTEE

Your standard 2 year guarantee is extended for an additional 1 year when you register the product within 28 days of purchase with Morphy Richards. If you do not register the product with Morphy Richards within 28 days, your product is guaranteed for 2 years.



**To validate your 3 year guarantee,  
scan the QR code or register online  
at [www.morphyrichards.co.uk](http://www.morphyrichards.co.uk)**

N.B. Each qualifying product needs to be registered with Morphy Richards individually. Please note that the 2 year guarantee is only available in the UK. Please refer to the 2 year guarantee for more information.

### YOUR 2 YEAR GUARANTEE

It is important to retain the retailer's receipt as proof of purchase. Staple your receipt to the back cover for future reference.

Please quote the following information if the product develops a fault. These numbers can be found on the base of the product.

**Model no.**

**Serial no.**

All Morphy Richards products are individually tested before leaving the factory. In the unlikely event of any appliance proving to be faulty within 28 days of purchase, it should be returned to the place of purchase for it to be replaced. If the fault develops after 28 days and within 24 months of original purchase, you should contact the Helpline quoting Model number and Serial number on the product, or write to Morphy Richards at the address shown. You may be asked to return a copy of proof of purchase.

Subject to the exclusions set out on the next page (see Exclusions), the faulty appliance will then be repaired or replaced as appropriate and dispatched usually within 7 working days of receipt.

If, for any reason, this item is replaced or repaired during the 2 year

## REGISTERING YOUR 3 YEAR GUARANTEE

guarantee period, the guarantee on the new item will be calculated from the original purchase date. Therefore it is vital to retain your original till receipt or invoice to indicate the date of initial purchase.

To qualify for the 2 year guarantee, the appliance must have been used according to the instructions supplied.

The appliance is intended for domestic use only. Misuse or use for commercial or any other purpose will render the guarantee invalid.

### **Exclusions**

Morphy Richards shall not be liable to replace or repair the goods under the terms of the guarantee where:

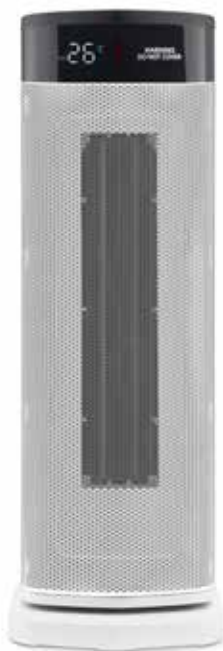
1. The fault has been caused or is attributable to accidental use, misuse, negligent use or used contrary to the manufacturer's recommendations or where the fault has been caused by power surges or damage caused in transit.
2. The appliance has been used on a voltage supply other than that stamped on the products.
3. Repairs have been attempted by persons other than our service staff (or authorised dealer).
4. The appliance has been used for hire purposes or non domestic use.
5. The appliance is second hand or refurbished.
6. Morphy Richards reserves the right not to carry out any type of servicing under the guarantee at its discretion.

This guarantee does not confer any rights other than those expressly set out above and does not cover any claims for consequential loss or damage. This guarantee is offered as an additional benefit and does not affect your statutory rights as a consumer. Morphy Richards products are intended for household use only. See usage limitations within the location safety instructions.

### **Disclaimer**

Morphy Richards has a policy of continuous improvement in product quality and design. The company, therefore reserves the right to change the specification of its models at any time.

# morphy richards



@morphyrichardsuk #loveyourmorphy

[morphyrichards.co.uk](https://www.morphyrichards.co.uk)

**Morphy Richards**

9 Cabot Lane, Poole, Dorset, BH17 7BY, UK

