


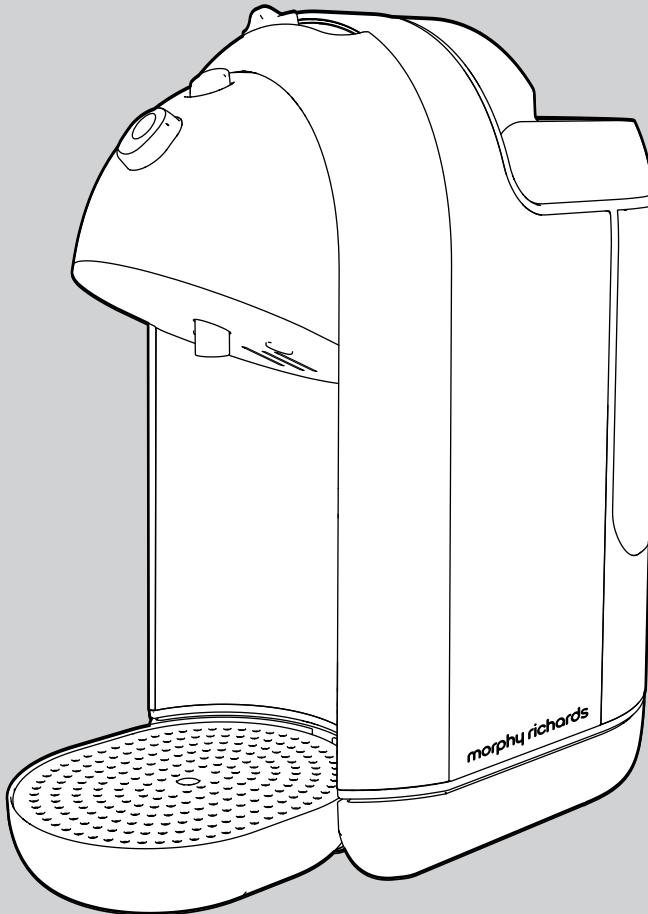
KT43922 MUK Rev 7

**morphy richards®**  
smart ideas for your home



# Accents One Cup

 Please read and keep these instructions for future use



For competitions, product hints and tips  
and more join us at



[www.morphyrichards.co.uk/blog](http://www.morphyrichards.co.uk/blog)



[www.facebook.com/morphyrichardsuk](http://www.facebook.com/morphyrichardsuk)



[@loveyourmorphy](https://twitter.com/loveyourmorphy)

[www.morphyrichards.com](http://www.morphyrichards.com)

\* Register online for your 2 year guarantee. See back of this instruction book for details (UK and Ireland customers only).

## Health and Safety

The use of any electrical appliance requires the following common sense safety rules. Please read these instructions carefully before using the product.

- This appliance can be used by children aged from 8 years and above if they have been given supervision or instruction concerning the use of the appliance in a safe way and understand the hazards involved. Cleaning and user maintenance shall not be made by children without supervision. Keep the appliance and its cord out of reach of children aged less than 8 years. Children shall not play with the appliance.
- Appliances can be used by persons with reduced physical, sensory or mental capabilities or lack of experience and knowledge if they have been given supervision or instruction concerning use of the appliance in a safe way and understand the hazards involved.
- This appliance is intended to be used in household and similar applications such as: farm houses, by clients in hotels, motels and other residential type environments, and bed and breakfast type environments. It is not suitable for use in staff kitchen areas in shops, offices and other working environments.
- If the mains cable is damaged, it must be replaced by the manufacturer, it's service agent or similarly qualified person in order to avoid a hazard.

### Location

- Ensure the Accents One Cup machine is used on a firm, flat surface.
- Do not use outdoors or in the bathroom.
- Do not place the Accents One Cup on a highly polished wooden surface as damage may occur to the surface.
- Do not place the Accents One Cup on or near hot surfaces such as a hot plate, radiant rings or near a naked flame.
- **WARNING: Do not place the Accents One Cup onto a metal tray or metal surface whilst in use.**

### Mains cable

- Do not let the mains cable hang over the edge of the worktop where a child could reach it.
- Do not let the mains cable run across an open space e.g. between a low socket and a table.
- Do not let the mains cable run across a cooker or other hot area which might damage the cable.

### Personal safety

- Do not touch metal parts until the unit has cooled.
- **WARNING: This appliance contains magnets, care must be taken by individuals using pacemakers.**  
**WARNING: To protect against fire, electric shock and personal injury do not immerse cord, plug and appliance in water or any other liquid.**
- **CAUTION: Ensure that the Accents One Cup is switched off before removing it from its base.**
- Do not move the Accents One Cup when switched on.

- Do not overfill the water reservoir.

### Treating scalds

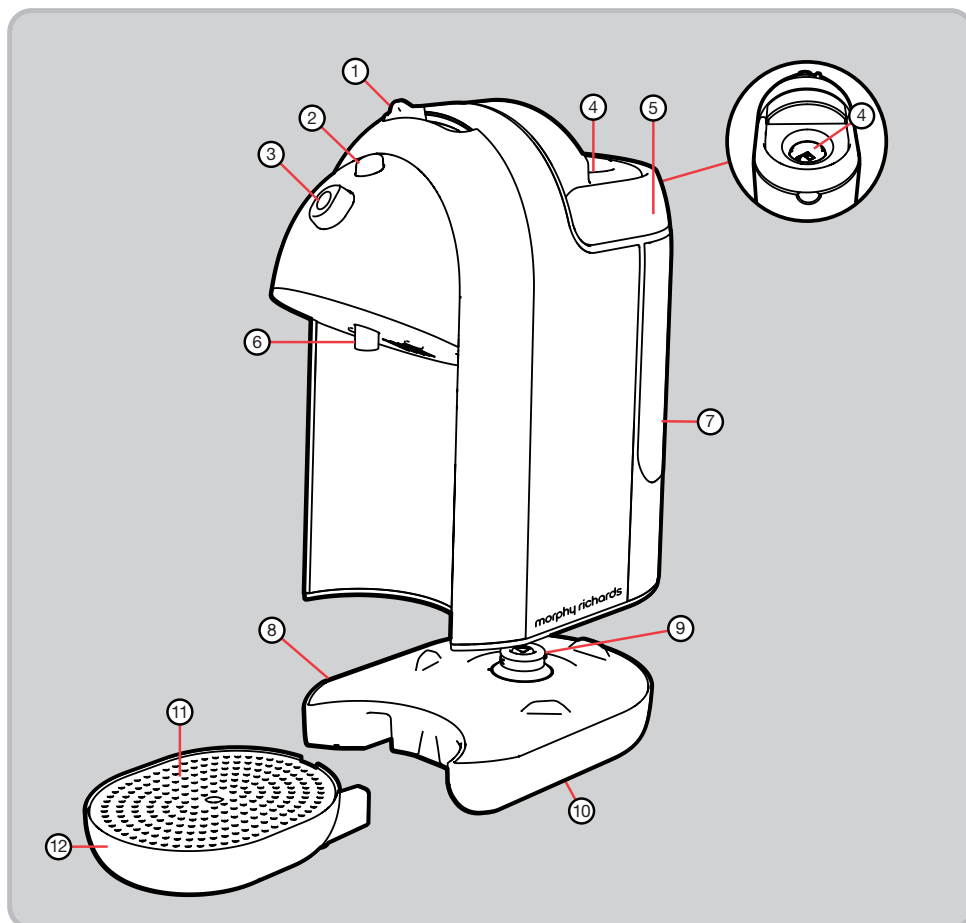
- Run cold water over the affected area immediately. Do not stop to remove clothing, get medical help quickly.
- **Other safety considerations**
- Disconnect the Accents One Cup from the mains supply when filling, cleaning or not in use.
- Do not immerse the Accents One Cup itself in water.
- Do not operate any appliance with a damaged cord or plug or after the appliance malfunctions or has been damaged in any manner. Ring the helpline number for advice on examination and repair.
- The use of attachments or tools not recommended or sold by Morphy Richards may cause fire, electric shock or injury.
- Do not use the Accents One Cup for anything other than its intended purpose.
- Do not leave the appliance unattended whilst in use.
- Do not attempt to connect any other appliance to the base unit or this appliance to another base unit.

### Electrical requirements

Check that the voltage on the rating plate of your appliance corresponds with your house electricity supply which must be A.C. (Alternating Current). Should the fuse in the mains plug require changing, a 13 amp BS1362 fuse must be fitted.

**WARNING: This appliance must be earthed.**

## Product overview



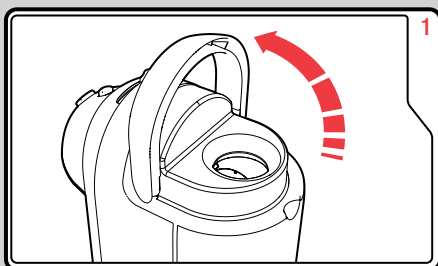
## Features

- |                       |                                |
|-----------------------|--------------------------------|
| (1) Cup Size Selector | (8) Cordless Base              |
| (2) Stop Button       | (9) 360° Connector             |
| (3) Start Button      | (10) Cord Storage (underneath) |
| (4) Reservoir Cap     | (11) Drip Tray Grid            |
| (5) Handle            | (12) Drip Tray                 |
| (6) Spout             |                                |
| (7) Water Gauge       |                                |

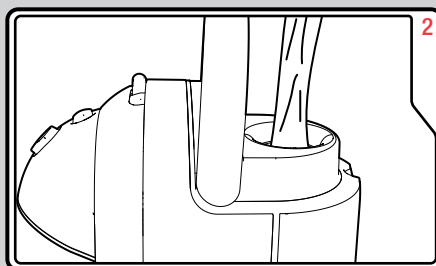
## Before first use

Before using your Accents One Cup for the first time or if you have not used it for some time, rinse the machine by running water through and disposing before boiling water for consumption.

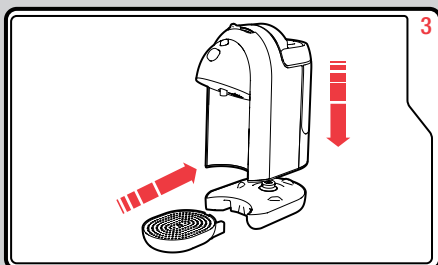
## Using your Accents One Cup



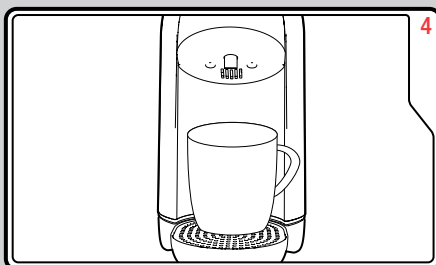
Lift the Handle (5) to open the Reservoir Cap (4).



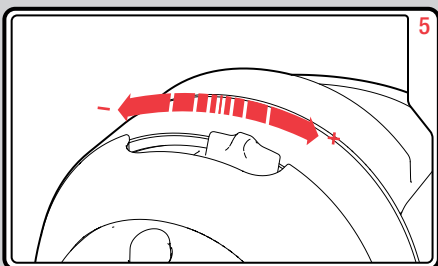
Fill the Accents One Cup with water.



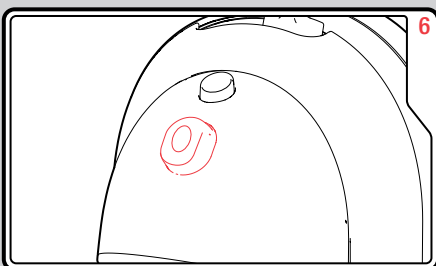
Place your Accents One Cup on the Cordless Base (8) and slide the Drip Tray (12) into position.



Place a cup under the Spout (6) on the Drip Tray. Plug your Accents One Cup into the mains.



Adjust the Cup Size Selector (1) to the amount of water to the amount you require.



Press the Start Button (3), your hot water will be dispensed shortly.

## Note

- Never use warm or hot water to fill the water reservoir.
- Keep the outside of the Accents One Cup area clean and dry at all times.
- This machine is only intended to boil hot water, do not put tea or coffee into the machine.

## Stop Button

- If you find the cup is getting too full, or you have not placed your cup in position, the excess water will overflow into the Drip Tray. Alternatively, press the Stop Button (2) to cancel the boiling process.

## Cleaning your kettle

- **WARNING:** Always disconnect the plug from the mains and allow the appliance to cool before cleaning.
- Wipe the outside with a damp cloth.
- **IMPORTANT:** Do not use abrasive cleaners on the outside of the appliance which may scratch the surface.

## Descaling

**IMPORTANT:** As this appliance is fitted with a concealed element it must be descaled regularly. The frequency of descaling depends on usage and the hardness of the water in your area.

Excessive scale can cause the appliance to switch off before boiling and may damage the element invalidating the warranty. It is essential that regular descaling takes place.

1. Fill the water reservoir to maximum level with cold water.
2. Add one sachet of proprietary liquid descaler, which is suitable for plastic kettles.
3. Set the Cup Size Selector (1) to maximum and place suitable vessel under the Spout (6).
4. Press the Start Button (3) and allow the unit to run and dispense the full volume of water.
5. Repeat steps 3 and 4.
6. Allow the Accents One Cup to stand for 10 minutes.

7. Press the Start Button and allow the unit to run and dispense the full volume of water.
8. Repeat step 7 until the water reservoir is empty.
9. Tip the unit upside down over a sink and shake to remove any water left in the boiling chamber.
10. Fill the water reservoir to maximum level with cold water.
11. Set the Cup Size Selector to maximum and place suitable vessel under the Spout.
12. Repeat steps 7-10.
13. Continue to use as normal.

**IMPORTANT:** Ensure that the electrical connections are completely dry before using the appliance.

## Contact us

### Helpline

If you are having a problem with your appliance, please call our Helpline, as we are more likely to be able to help than the store you purchased the item from.

Please have the product name, model number and serial number to hand when you call to help us deal with your enquiry quicker.

UK Helpline: 0344 871 0944

IRE Helpline: 1800 409 119

Spares: 0344 873 0710

### Talk To Us

If you have any questions or comments, or want some great tips or recipe ideas to help you get the most out of your products, join us online:

Blog: [www.morphyrichards.co.uk/blog](http://www.morphyrichards.co.uk/blog)

Facebook: [www.facebook.com/morphyrichardsuk](http://www.facebook.com/morphyrichardsuk)

Twitter: @loveyourmorphy

Website: [www.morphyrichards.com](http://www.morphyrichards.com)

## Troubleshooting

Problem	Reason	Solution
<ul style="list-style-type: none"> <li>The start button will not work.</li> </ul>	<ul style="list-style-type: none"> <li>The Accents One Cup needs to reset after its last use.</li> </ul>	<ul style="list-style-type: none"> <li>Wait for five seconds and try again.</li> </ul>
<ul style="list-style-type: none"> <li>My Accents One Cup does not dispense a full cup.</li> </ul>	<ol style="list-style-type: none"> <li>The Cup Size Selector is not set correctly.</li> <li>There is less than one cup's volume in the water reservoir.</li> </ol>	<ol style="list-style-type: none"> <li>Adjust the Cup Size Selector according to the cup you have placed on the drip tray.</li> <li>Refill your Accents One Cup.</li> </ol>
<ul style="list-style-type: none"> <li>My cup is overflowing.</li> </ul>	<ul style="list-style-type: none"> <li>The cup size selector is not set correctly.</li> </ul>	<ul style="list-style-type: none"> <li>Adjust the Cup Size Selector according to the cup you have placed on the drip tray.</li> </ul>
<ul style="list-style-type: none"> <li>My Accents One Cup makes an unusual noise once boiled.</li> </ul>	<ul style="list-style-type: none"> <li>This is the dispense mechanism resetting so that only one cup is dispensed at a time.</li> </ul>	<ul style="list-style-type: none"> <li>This means it is working correctly.</li> </ul>
<ul style="list-style-type: none"> <li>The temperature of the water seems cooler.</li> </ul>	<ul style="list-style-type: none"> <li>There may be a build up of limescale.</li> </ul>	<ul style="list-style-type: none"> <li>Descale your Accents One Cup (refer to Descaling.)</li> </ul>
<ul style="list-style-type: none"> <li>My Accents One Cup does not boil or illuminate.</li> </ul>	<ol style="list-style-type: none"> <li>Your Accents One Cup is not plugged in.</li> <li>The Cordless Base is not attached to the main unit.</li> <li>There is no water in the water reservoir.</li> </ol>	<ol style="list-style-type: none"> <li>Plug it in and switch on at the socket.</li> <li>Check the base and unit are connected correctly.</li> <li>Once your Accents One Cup has cooled down, refill with cold water.</li> </ol>
<ul style="list-style-type: none"> <li>Occasionally, water drips from the spout after the unit has dispensed hot water.</li> </ul>	<ul style="list-style-type: none"> <li>There may be a small amount of residual water left in the pump after it has been dispensed.</li> </ul>	<ul style="list-style-type: none"> <li>This is normal. The drip tray will catch any drops that may occur.</li> </ul>
<ul style="list-style-type: none"> <li>There is steam coming through the top of my Accents One Cup.</li> </ul>	<ul style="list-style-type: none"> <li>As with a standard kettle, boiling water will produce steam which needs to be released.</li> </ul>	<ul style="list-style-type: none"> <li>This is normal, your Accents One Cup has been designed to direct steam in this way.</li> </ul>

Notes

Lined area for notes, consisting of two columns of horizontal lines.

KT43922 MUK Rev 7 01/15

## Registering your 2 year guarantee

Your standard one year guarantee is extended for an additional 12 months when you register the product within 28 days of purchase with Morphy Richards. If you do not register the product with Morphy Richards within 28 days, your product is guaranteed for 1 year. To validate your 2 year guarantee register with us online at

[www.morphyrichards.co.uk](http://www.morphyrichards.co.uk)

Or call our customer registration line

**UK 0344 871 0242**

**IRE 1800 409 119**

N.B. Each qualifying product needs to be registered with Morphy Richards individually.

Please note that the 2 year guarantee is only available in the UK and Ireland. Please refer to the one year guarantee for more information.

## Your 1 year guarantee

It is important to retain the retailer's receipt as proof of purchase. Staple your receipt to this back cover for future reference.

Please quote the following information if the product develops a fault. These numbers can be found on the base of the product.

Model no.

Serial no.

All Morphy Richards products are individually tested before leaving the factory. In the unlikely event of any appliance proving to be faulty within 28 days of purchase, it should be returned to the place of purchase for it to be replaced.

If the fault develops after 28 days and within 12 months of original purchase, you should contact the Helpline number quoting Model number and Serial number on the product, or write to Morphy Richards at the address shown.

You may be asked to return a copy of proof of purchase.

Subject to the exclusions set out below (see Exclusions), the faulty appliance will then be repaired or replaced as appropriate and dispatched usually within 7 working days of receipt.

If, for any reason, this item is replaced or repaired during the 1 year guarantee period, the guarantee on the new item will be calculated from original purchase date. Therefore it is vital to retain your original till receipt or invoice to indicate the date of initial purchase.

To qualify for the 1 year guarantee, the appliance must have been used according to the instructions supplied. For example, crumb trays should have been emptied regularly.

## Exclusions

Morphy Richards shall not be liable to replace or repair the goods under the terms of the guarantee where:

- 1 The fault has been caused or is attributable to accidental use, misuse, negligent use or used contrary to the manufacturer's recommendations or where the fault has been caused by power surges or damage caused in transit.
  - 2 The appliance has been used on a voltage supply other than that stamped on the products.
  - 3 Repairs have been attempted by persons other than our service staff (or authorised dealer).
  - 4 The appliance has been used for hire purposes or non domestic use.
  - 5 The appliance is second hand.
  - 6 Morphy Richards reserves the right not to carry out any type of servicing under the guarantee at its discretion
  - 7 Plastic filters for all Morphy Richards kettles and coffee makers are not covered by the guarantee.
  - 8 Batteries and damage from leakage are not covered by the guarantee.
- This guarantee does not confer any rights other than those expressly set out above and does not cover any claims for consequential loss or damage. This guarantee is offered as an additional benefit and does not affect your statutory rights as a consumer. Morphy Richards products are intended for household use only. See usage limitations within the location safety instructions.

## Disclaimer

Morphy Richards has a policy of continuous improvement in product quality and design. The company, therefore reserves the right to change the specification of its models at any time.



For electrical products sold within the European Community. At the end of the electrical products useful life, it should not be disposed of with household waste.

Please recycle where facilities exist. Check with your Local Authority or retailer for recycling advice in your country

**IF YOU ARE HAVING A PROBLEM  
WITH ONE OF OUR PRODUCTS, CALL  
OUR HELPLINE:**

**UK: 0344 871 0944  
EIRE: 1800 409 119  
SPARES: 0344 873 0710**

**morphyrichards**

The After Sales Division  
Morphy Richards Ltd  
Mexborough, South Yorkshire,  
England, S64 8AJ

Helplines (office hours)  
UK 0344 871 0944  
Spare Parts 0344 873 0710  
Republic of Ireland 1800 409 119  
[www.morphyrichards.com](http://www.morphyrichards.com)

