

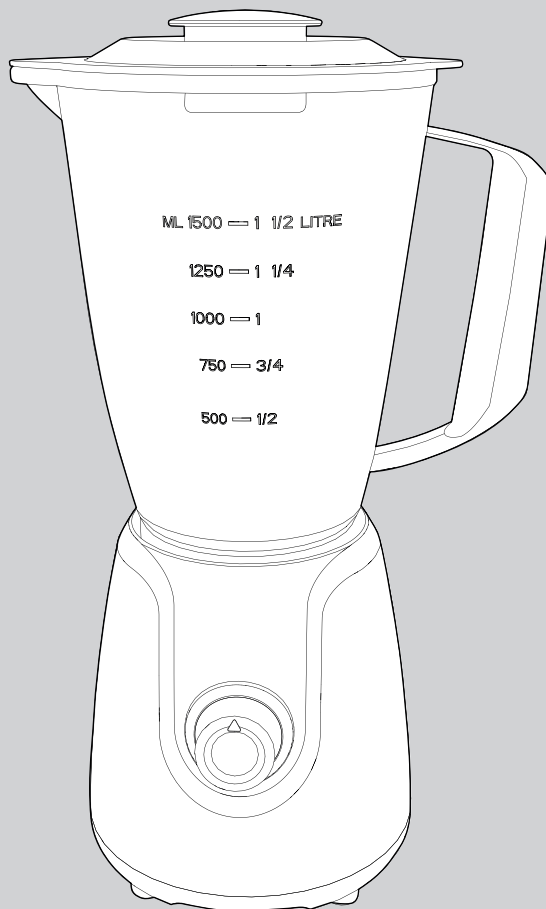
FP403052 MUK Rev 1

morphy richards®
smart ideas for your home



Plastic Table Blender

 Please read and keep these instructions for future use



For competitions, product hints and tips
and more join us at



www.morphyrichards.co.uk/blog



www.facebook.com/morphyrichardsuk



[@loveyourmorphy](https://twitter.com/loveyourmorphy)

www.morphyrichards.com

Health And Safety

The use of any electrical appliance requires the following common sense safety rules.
Please read these instructions carefully before using the product.

- This appliance can be used by persons with reduced physical, sensory or mental capabilities, or lack of experience and knowledge, if they have been given supervision or instruction concerning the use of the appliance in a safe way and understand the hazards involved.
- This appliance shall not be used by children.
- Children shall not play with the appliance.
- Keep appliance and cord out of the reach of children.
- CAUTION: Ensure that the blender is switched off before removing it from the stand or approaching parts that move in use.
- Avoid touching moving parts. Keep hands, hair and clothing, and utensils away from the blender blades during operation, to prevent personal injury and/or damage to the appliance.
- Do not blend for periods longer than stated on page 5.
- Always disconnect the blender from the supply if it is left unattended and before assembling, disassembling or cleaning.
- Care shall be taken when handling the sharp cutting blades, emptying the jug and during cleaning.
- For care & cleaning refer to page 6 & 7.

In addition, we offer the following safety advice.

Location

- Do not use outdoors or in a bathroom.
- Always locate your appliance away from the edge of the worktop.
- Do not place the jug used with the appliance on a highly polished wooden surface as damage may occur to the surface.

Mains cable

- Do not let the mains cable hang over the edge of the worktop where a child could reach it.
- Do not let the lead run across an open space e.g. between a low socket and a table.
- Do not let the cable run across a cooker or other hot area which might damage the cable.
- The mains cable should reach from the socket to the base unit without straining the connections.
- The power cord cannot be replaced. Contact Morphy Richards for advice.

Other safety considerations

- Do not use the appliance for anything other than its intended purpose.
- The use of attachments or tools not recommended or sold by Morphy Richards may cause fire, electric shock or injury.
- **WARNING: Misuse of appliance could cause personal injury.**

Product specific safety

- **IMPORTANT:** Allow hot liquids to cool before adding to the blender, always ensure the lid is fitted correctly.
- Be careful if hot liquid is poured into the blender as it can be ejected out of the appliance due to sudden steaming.
- Do not use the appliance if the plastic jug or lid is damaged or has visible cracks.

Electrical requirements

Check that the voltage on the rating plate of your appliance corresponds with your house electricity supply which must be A.C. (Alternating Current).

Should the fuse in the mains plug require changing, a 3 amp BS1362 fuse must be fitted.

Introduction

Thank you for your recent purchase of this Morphy Richards Table Blender.

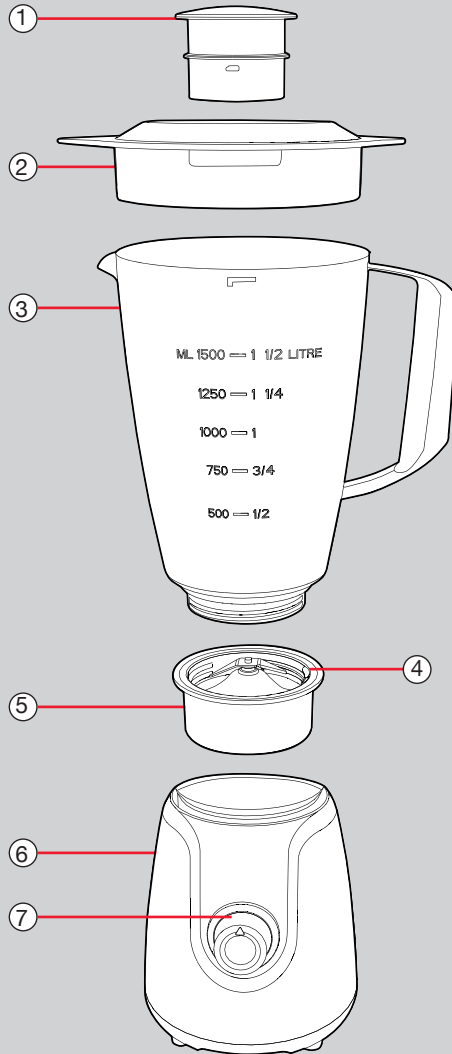
Please read the instructions for information on how to use your Table Blender before use.

Remember to visit www.morphyrichards.co.uk to register your product's one year guarantee.

Contents

Health And Safety	2
Introduction	3
Product Overview	4
Before First Use	5
How to Use	5
Operating Tips	6
Care And Cleaning	6-7
Contact Us	7
Guarantee	8

Product Overview



Features

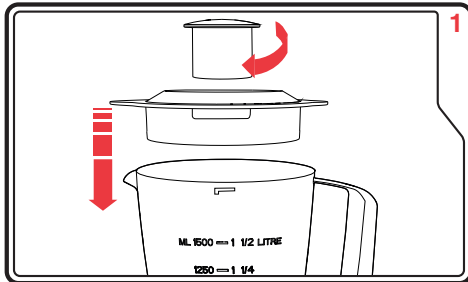
- | | |
|-------------------|--------------------|
| (1) Measuring Cup | (5) Blade Assembly |
| (2) Lid | (6) Motor Base |
| (3) Plastic Jug | (7) Speed Dial |
| (4) Seal Ring | |

Before First Use

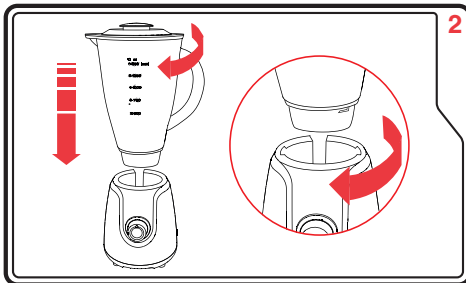
1. Before first use, unpack the appliance and place all parts on a surface.
2. Wash the Jug (3), Lid (2) and Measuring Cup (1) in warm, soapy water and dry thoroughly.

CAUTION – Blades are sharp

3. Place ingredients into the Jug (3) and fit the Lid (2) by placing the Lid (2) on top of the Jug (3) and turn clockwise so the tab on the Lid (2) clips onto the catch on the Jug (3).



4. Ensure the 0 position is selected on the Speed Dial (7) before placing the Jug (3) onto the Motor Base (6).

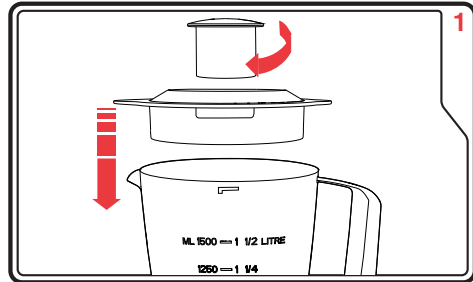


5. Place the Jug (3) onto the Motor Base (6) by aligning the tab and rotate clockwise to lock

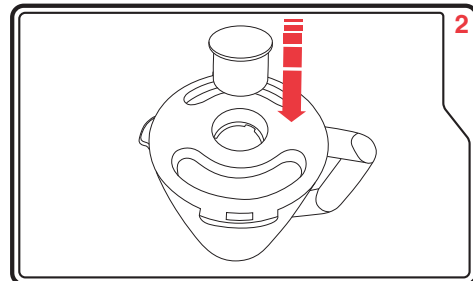
How to Use

1. Place ingredients into the Jug (3). The amount of mixture should not exceed the max level as indicated on the Jug (3).

2. Put the Lid (2) on the Jug (3). Be sure the Measuring Cup (1) is in place.



3. Plug into the wall power socket.
4. Turn the Speed Dial (7) to the appropriate speed for your task.
5. For a quick, powerful blend, turn the Speed Dial (7) to the P position and hold for a few seconds and then release. The Speed Dial (7) will reset to the 0 position automatically. Repeat several times until the consistency you want is achieved.
6. If you want to add ingredients while the blender is working, remove the Measuring Cup (1) and place through the Lid (2) opening.



7. When crushing and hard food, keep one hand firmly on the Lid (2).
8. When you have reached your desired consistency, turn the Speed Dial (7) to the 0 position.

NOTE: For each use, the consecutive operation time should not exceed 1 minute.

At least 10 minutes rest time must be maintained between two consecutive cycles (2 x 1 minute) Let the unit cool to room temperature before performing the next operation cycle.

Operating Tips

- For recipes that include liquid, ensure that the liquid is added before any solid ingredients.
- It is not advised to use the Table Blender for the following tasks; beating egg whites, whipping cream, mashed potato, grinding meat, mixing dough, extracting juice from fruit and vegetables
- The following items should never be placed in the Table Blender, as they may cause damage: bones, large solid pieces, frozen food or tough foods such as turnips.
- **DO NOT USE TO CRUSH ICE ON IT'S OWN.**
- 3 ice cubes can be used as part of a recipe with other ingredients added.

Care And Cleaning

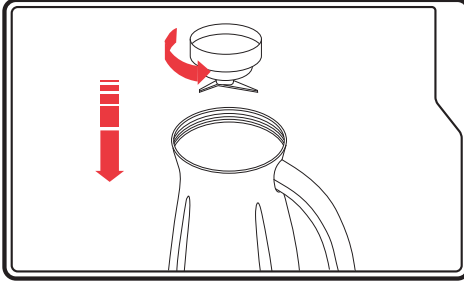
1. Before cleaning, unplug your Table Blender from the wall power socket
2. Always wash immediately after use for easy cleaning. Do not let food dry on the jug assembly as this will make cleaning difficult.
3. Pour a little (300ml) warm, soapy water into the Jug (3), replace the lid (2) and turn the Speed Dial (7) to the P position for a few seconds. Empty the Jug (3) and repeat the process. Rinse the Jug (3) and dry thoroughly.
4. Wipe the Motor Base (6) with a damp cloth and dry thoroughly. If liquids spills into the Motor Base (6), first unplug the Blender, then wipe with a dry cloth and dry thoroughly.

WARNING

- **Do not immerse the Motor Base (6) in liquid**
- **Do not use rough scouring pads or cleaners on any parts.**

Blade Cleaning

- Occasionally you may wish to clean the blade.
- Firstly, turn the Jug (3) upside down (see image) and unscrew the Blade Assembly (5). Turn clockwise until loose then remove.



- Clean the Blade with the aid of a small brush, in warm, soapy water and dry.

WARNING: Sharp Blades

- To reassemble, align the Blade Assembly (5) with the tabs on the base of the Jug (3) and turn anti-clock wise until Blade Assembly (5) locks into place. Ensure the seal is correctly fitted to the Blade Assembly (5) before reassemble.

Contact Us

Helpline

If you are having a problem with your appliance, please call our Helpline, as we are more likely to be able to help than the store you purchased the item from.

Please have the product name, model number and serial number to hand when you call to help us deal with your enquiry quicker.

UK Helpline: 0344 871 0944

IRE Helpline: 1800 409 119

Spares: 0344 873 0710

Talk To Us

If you have any questions or comments, or want some great tips or recipe ideas to help you get the most out of your products, join us online:

Blog: www.morphyrichards.co.uk/blog

Facebook: www.facebook.com/morphyrichardsuk

Twitter: @loveyourmorphy

Website: www.morphyrichards.com

FP403052 MUK Rev 1 05/18

Your 1 Year Guarantee

All Morphy Richards products are individually tested before leaving the factory. In the unlikely event of any appliance proving to be faulty within 28 days of purchase, it should be returned to the place of purchase for it to be replaced.

If the fault develops after 28 days and within 12 months of original purchase, you should contact the Helpline number quoting Model number and Serial number on the product, or write to Morphy Richards at the address shown.

You may be asked to return a copy of proof of purchase.

Subject to the exclusions set out below (see Exclusions), the faulty appliance will then be repaired or replaced as appropriate and dispatched usually within 7 working days of receipt.

If, for any reason, this item is replaced or repaired during the 1 year guarantee period, the guarantee on the new item will be calculated from original purchase date. Therefore it is vital to retain your original till receipt or invoice to indicate the date of initial purchase.

To qualify for the 1 year guarantee, the appliance must have been used according to the instructions supplied. For example, crumb trays should have been emptied regularly.

Exclusions

- 1 The fault has been caused or is attributable to accidental use, misuse, negligent use or used contrary to the manufacturer's recommendations or where the fault has been caused by power surges or damage caused in transit.
- 2 The appliance has been used on a voltage supply other than that stamped on the products.
- 3 Repairs have been attempted by persons other than our service staff (or authorised dealer).
- 4 The appliance has been used for hire purposes or non domestic use.
- 5 The appliance is second hand.
- 6 Morphy Richards reserves the right not to carry out any type of servicing under the guarantee at its discretion
- 7 Batteries and damage from leakage are not covered by the guarantee.
 - These guarantees do not confer any rights other than those expressly set out above and do not cover any claims for consequential loss or damage. These guarantees are offered as an additional benefit and do not affect your statutory rights as a consumer. Morphy Richards products are intended for household use only. See usage limitations within the location safety instructions.
 - Morphy Richards shall not be liable to replace or repair the goods under the terms of either the Lifetime Blade Guarantee or the 1 Year Guarantee.

Disclaimer

Morphy Richards has a policy of continuous improvement in product quality and design. The company, therefore reserves the right to change the specification of it's models at any time.



For electrical products sold within the European Community. At the end of the electrical products useful life, it should not be disposed of with household waste.

Please recycle where facilities exist. Check with your Local Authority or retailer for recycling advice in your country

**IF YOU ARE HAVING A PROBLEM
WITH ONE OF OUR PRODUCTS, CALL
OUR HELPLINE:**

**UK: 0344 871 0944
EIRE: 1800 409 119
SPARES: 0344 873 0710**

morphy richards

The After Sales Division
Morphy Richards Ltd
Mexborough, South Yorkshire,
England, S64 8AJ

Helplines (office hours)
UK 0344 871 0944
Spare Parts 0344 873 0710
Republic of Ireland 1800 409 119
www.morphyrichards.com

