

FP403035 MUK Rev 2

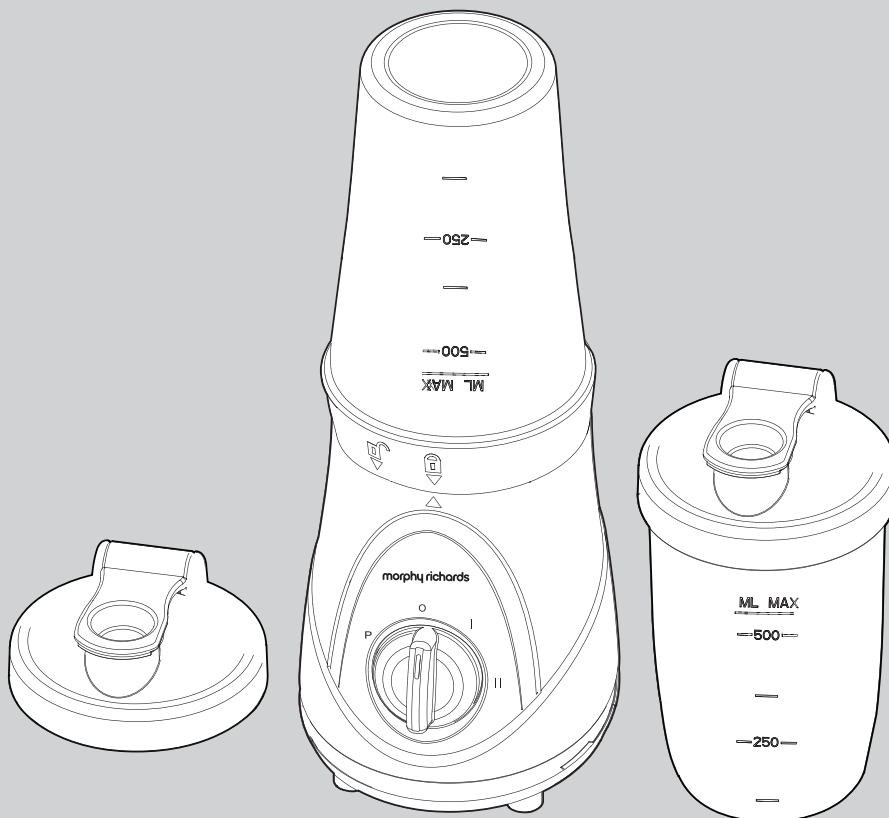
**morphy richards®**

smart ideas for your home



# Blend Express

 Please read and keep these instructions for future use



For competitions, product hints and tips and more join us at



[www.morphyrichards.co.uk/blog](http://www.morphyrichards.co.uk/blog)



[www.facebook.com/morphyrichardsuk](https://www.facebook.com/morphyrichardsuk)



[@loveyourmorphy](https://twitter.com/loveyourmorphy)

[www.morphyrichards.com](http://www.morphyrichards.com)

\* Register online for your 2 year guarantee. See the back of this instruction book for details (UK and Ireland customers only).

## Health and Safety

The use of any electrical appliance requires the following common sense safety rules. Please read these instructions carefully before using the product.

- This appliance can be used by persons with reduced physical, sensory or mental capabilities, or lack of experience and knowledge, if they have been given supervision or instruction concerning the use of the appliance in a safe way and understand the hazards involved.
- Children shall not play with the appliance.
- This appliance shall not be used by children.
- Keep the appliance and cord out of reach of children.
- Do not blend for longer than the time periods recommended in 'Usage' on page 6.
- Always disconnect from the supply if left unattended and before assembling, disassembling or cleaning.
- For care and cleaning refer to page 7.
- Avoid touching moving parts. Keep hands, hair and clothing, and utensils away from the attachment blades during operation, to prevent personal injury and/or damage to the appliance.
- This appliance is protected by a motor overheat device. During operation if the motor stops, turn off and unplug and allow at least 20 minutes to cool.
- If the supply cord is damaged, it must be replaced by the manufacturer, its service agent or similarly qualified persons in order to avoid a hazard.

In addition, we offer the following safety advice.

### Location

- This appliance is intended to be used in household and similar applications such as: farm houses; by clients in hotels, motels and other residential type environments; bed and breakfast type environments. It is not suitable for use in staff kitchen areas in shops, offices and other working environments.
- Do not use outdoors or in a bathroom.
- Always locate your appliance away from the edge of the worktop.

### Mains cable

- Do not let the mains cable hang over the edge of the worktop where a child could reach it.
- Do not let the lead run across an open space e.g. between a low socket and a table.
- Do not let the cable run across a cooker or other hot area which might damage the cable.
- The mains cable should reach from the socket to the base unit without straining the connections.

### Personal safety

- Care shall be taken when handling the sharp cutting blades, emptying the beakers and during cleaning.

### Other safety considerations

- Do not use the appliance for anything other than its intended purpose.
- **Product specific safety**
- **WARNING: The blender blades are very sharp. Handle with care when using and cleaning.**
- **WARNING: Misuse can cause potential injury.**
- Do not clean the attachments under running water while they are in position.
- **IMPORTANT:** Allow hot liquids to cool before adding to the blender.
- Be careful whilst hot liquid is blending or poured onto the blender as it can be ejected due to sudden steaming.
- Switch off the appliance and disconnect from supply before changing accessories or approaching parts that move in use.

### Electrical requirements

Check that the voltage on the rating plate of your appliance corresponds with your house electricity supply which must be A.C. (Alternating Current).

Should the fuse in the mains plug require changing, a 3 amp BS1362 fuse must be fitted.

## Introduction

Thank you for purchasing your new Morphy Richards Blend Express.

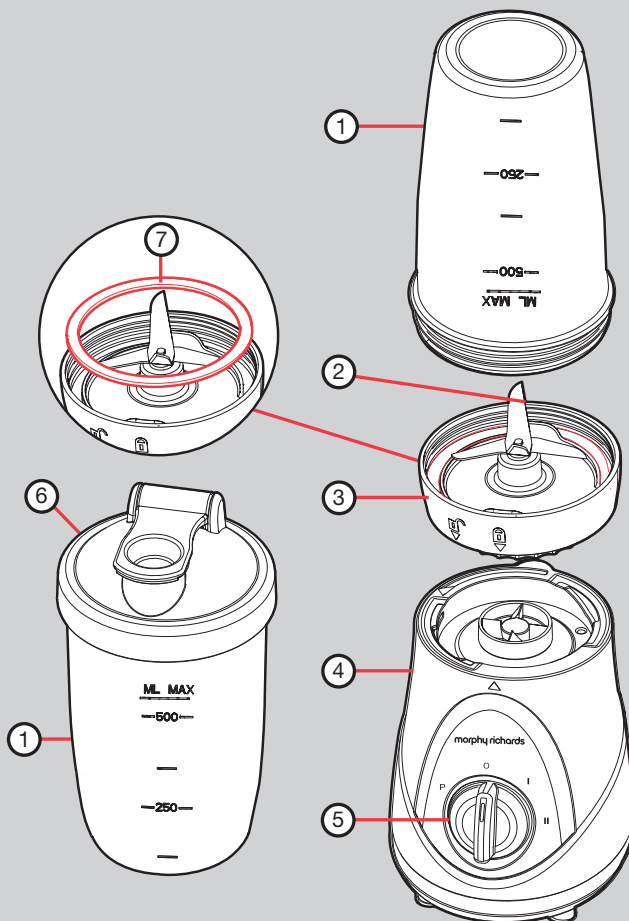
Your Blend Express will allow you to create an extensive selection of drinks. **Please read the instructions thoroughly before use.**

Remember to visit [www.morphyrichards.co.uk](http://www.morphyrichards.co.uk) to register your product's two year guarantee.

## Contents

Health and Safety .....	2
Introduction .....	3
Features .....	4
Before first use .....	5
Using your Blend Express .....	5
Safety Seal .....	6
Usage .....	6
Suitable foods .....	6
Ice Crushing .....	6
Tips .....	6
Care and cleaning .....	7
Recipes .....	7
Contact us .....	11
Notes .....	11
Guarantee .....	12

## Product overview



## Features

- (1) Beaker (x2) 500ml
- (2) Blade
- (3) Blade Lid
- (4) Main Unit
- (5) Control Knob
- (6) Sports Lid (x2)
- (7) Safety Seal

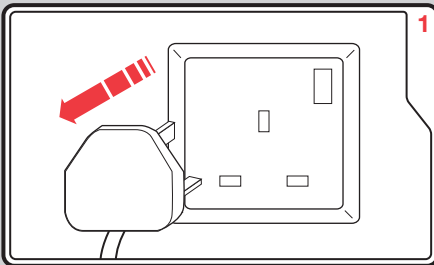
## Before first use

**WARNING:** Sharp blades, handle with care.

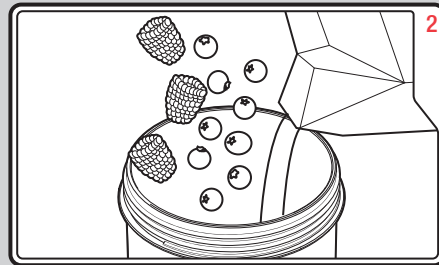
Before using for the first time or if unused for a long period, wash your Blend Express thoroughly.

1. Remove the Safety Seal (7) from the Blade Lid (3).
2. Wash all parts except the Main Unit (4) in hot soapy water and dry thoroughly. Do not allow the Blade Lid to stand in water.

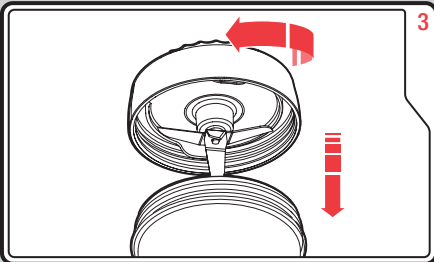
## Using your Blend Express



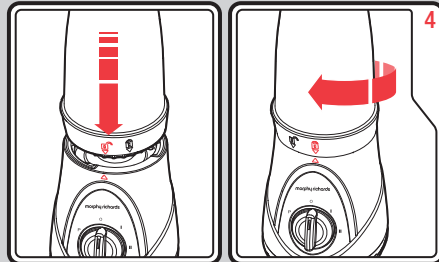
**WARNING:** Ensure your Blend Express is unplugged from the mains before use.



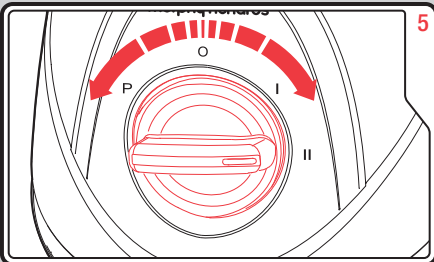
Add the ingredients to the Beaker (1). Do not exceed the 500ml level.



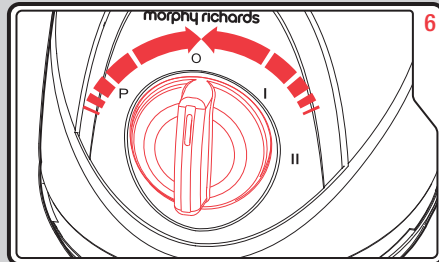
Ensure the Safety Seal (7) is fitted correctly. Attach the Blade Lid (3) to the Beaker. Screw to fix into place securely.



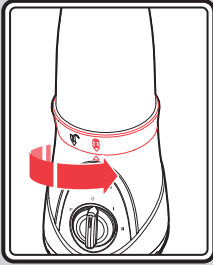
Attach the Blade Lid to the Main Unit (4). Align the open padlock and arrow and twist to lock into place.



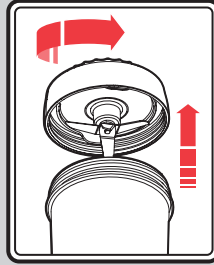
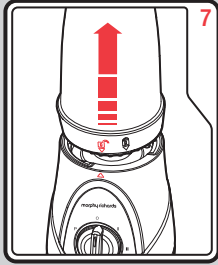
Plug into the mains. Turn the Control Knob (5) to the desired speed High (II), Low (I), or Pulse (P). Your Blend Express will begin to blend.



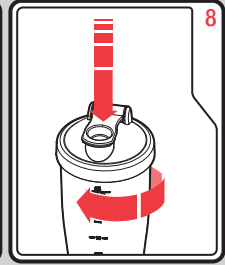
When finished, turn the Control Knob to the Off (O) position and unplug from the Mains.



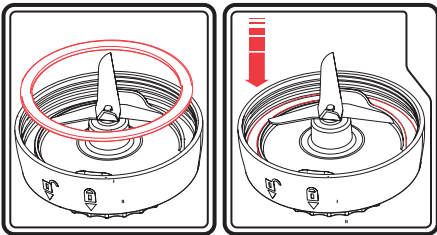
Hold the Blade lid and twist to Unlock from the Main Unit. **DO NOT** hold the Beaker.



Unscrew the Blade Lid (3) from the Beaker (1). For drinks on the go, attach a Cap (6) to the Beaker (1).



## Safety Seal



- There is a Safety Seal (7) in place on the Blade Lid (3). This is to prevent leakage from your Blend Express when in use and for when the Beaker (1) is upside down.
- When inserting the Safety Seal (7), ensure that it is pressed tightly into the channel in the Blade Lid (3). Ensure the Safety Seal (7) is correctly located before the Beaker (1) is screwed onto the Blade Lid (3).
- After screwing the Blade Lid (3) onto the Beaker (1), look inside to check the Safety Seal (7) is securely fitted before attaching to the Main Unit (4).
- Always ensure the Safety Seal (7) is in place before use. Failure to do so could cause damage to the appliance.
- The Safety Seal (7) only needs to be removed for cleaning. After cleaning ensure the Safety Seal (7) is reinserted as directed before using the Blend Express.

## Usage

**Do not operate your Blend Express continuously for more than 40 seconds. After using for this length of time, let it cool down for 10 minutes before using again.**

## Suitable foods

Your Blend Express is ideal for blending a wide range of foods, including fruit and dairy. However it is **NOT** suitable for the following uses;

- Grinding or mashing heavy foods (e.g. potatoes or meat).
- Stirring thick mixtures (e.g. dough).
- Do not use hot liquids in the blender as it can be ejected out of the appliance due to sudden steaming.

## Ice Crushing

- If using ice in a recipe (i.e. blending it with other liquids), do not use more than **6 ice cubes**.
- Only crush ice as part of the recipe - do not crush ice on its own.

## Tips

- To reduce the thickness of a smoothie, use the Pulse setting.
- Ensure when removing the full Beaker (1) from the Main Unit (4) hold the edge of the Blade Lid (3) and twist. **DO NOT** hold the Beaker (1).
- If using seeded berries, it is recommended to sieve the drink before serving for smoother consistency.
- Some protein powder additives can cause a reaction (fermentation) with other ingredients. Be careful when using and follow the manufacturers instructions. Do not store these mixed drinks in an airtight container as the fermentation can cause the mixture to expand and cause the lid seal to burst. If in doubt store in the container with the lid removed.

## Care and cleaning

It is important to clean your Blend Express immediately after use.

1. Switch your Blend Express off and unplug from the electrical outlet.
2. Remove the Safety Seal (7) from the Blade Lid (3).

**WARNING: Extreme care must be taken when washing the Blade (2) as it is sharp.**

3. Wash all parts except the Main Unit (4) in hot soapy water, dry thoroughly. Do not allow the Blade Lid (3) to stand in water.

A small brush can be used to help dislodge food from under the Blade (2) on the Blade Lid (3).

4. Replace the Safety Seal (7) into the Blade Lid (3) before use. Ensure the Safety Seal (7) is correctly located before the Beaker (1) is screwed onto the Blade Lid (3).

5. Clean the Main Unit (4) with a damp cloth. Do not immerse in water.

- The Beakers (1) and Caps (6) are dishwasher safe, place on the top shelf on a cool wash only.

**WARNING: Always unplug the appliance before cleaning.**

## Recipes



We have developed these recipes for you to use in your Blend Express, from smoothies to health drinks, frappuccinos and mocktails, there are choices for all tastes.

The ingredients and blending times given in the following recipes are only a guide and can be adjusted to suit personal taste.

Each recipe has been created for a 500ml portion.

## Breakfast

### Strawberry Banana Smoothie

**Ingredients:**

- 65g strawberries, hulled and sliced
- ¼ banana, peeled and sliced
- 135ml apple juice
- 200g low fat vanilla yogurt
- 2 ice cubes

**Method:**

- 1 Add all the ingredients to the Beaker.
- 2 Blend on Speed II for 20 seconds.

### Sweet Berry Kiss Smoothie

**Ingredients:**

- 200g low fat vanilla yogurt
- 135ml skimmed milk
- 50g frozen cherries
- 2 ice cubes

**Method:**

- 1 Add all the ingredients to the Beaker.
- 2 Blend on Speed II for 30 seconds.

## Revitalise

### Summer Berry Delight

**Ingredients:**

- 40g raspberries
- 70g strawberries hulled and sliced
- 70g blueberries
- 40g cherries, stoned
- 200ml apple juice

**Method:**

- 1 Add all the ingredients to the Beaker.
- 2 Blend on Speed II for 20 seconds.

Note: Strain the smoothie through a sieve to remove the pips if desired.

### Citrus Sensation

**Ingredients:**

- 200g low fat vanilla yogurt
- 135ml orange juice
- 50g orange, peeled and diced
- 50g grapefruit, peeled and diced
- 4 ice cubes

**Method:**

- 1 Add all the ingredients to the Beaker.
- 2 Pulse for approximately 15 seconds.

Note: citrus fruit may leave 'bits' in the drink. You may wish to sieve before drinking.



## Coffee

### Coffee Frappe

**Ingredients:**

- 200ml strong coffee, cooled
- 190g low fat frozen yogurt
- 6 ice cubes

**Method:**

- 1 Add all the ingredients to the Beaker.
- 2 Blend on Speed II for 30 seconds.

## Milkshakes

### Chocolate Banana Milkshake

**Ingredients:**

- 40g dark chocolate, broken into small pieces.
- 250g low fat vanilla yogurt
- 100ml skimmed milk
- ½ banana, peeled and sliced thinly

**Method:**

- 1 Pulse the chocolate to break it up into smaller pieces / shards.
- 2 Add the rest of the ingredients to the Beaker.
- 3 Blend on Speed II for 30 seconds.

Note: the banana must be sliced very thinly to ensure it blends into the drink properly.

## Powdered mix

### Milkshakes and protein powders

**Ingredients:**

- Follow amounts listed on pack
- Do not exceed the individual beaker maximum (500ml)**

**Method:**

- 1 Add all the ingredients to the Beaker.
- 2 Blend until smooth.

NOTE: Some protein powder additives can cause a reaction (fermentation) with other ingredients. Be careful when using and follow the manufacturers instructions. Do not store these mixed drinks in an airtight container as the fermentation can cause the mixture to expand and cause the lid seal to burst. If in doubt store in the container with the lid removed.

## Mocktails

### Sweet and Sour Colada

**Ingredients:**

- 90g strawberries, hulled and sliced
- 70g lemon sorbet
- 55ml elderflower cordial
- 175ml apple juice
- 3 ice cubes

**Method:**

- 1 Add all the ingredients to the Beaker in the order listed.
- 2 Blend on Speed II for 30 seconds.
- 3 Strain into a glass.

### Raspberry & Cranberry Cosmo

**Ingredients:**

- 70g raspberries
- 200ml cranberry juice
- 100ml lemonade
- 3 ice cubes

**Method:**

- 1 Add all the ingredients, except the ice cubes to the Beaker.
- 2 Blend on Speed II for 10 seconds.
- 3 Strain to remove the pips.
- 4 Add the ice cubes to the mixture and blend on Speed II for a further 5 seconds.

### Pina Colada

**Ingredients:**

- 270ml pineapple juice
- 100ml coconut milk
- 130ml mango and coconut sparkling water
- 2 ice cubes

**Method:**

- 1 Add all the ingredients, except the ice cubes to the Beaker.
- 2 Blend on Speed I for 20 seconds.
- 3 Serve poured over the ice.

### Pine Lime Sparkle

**Ingredients:**

- 280ml pineapple juice, chilled
- 20ml lemon juice
- 80ml lime cordial
- 80ml bitter lemon drink

**Method:**

- 1 Add all the ingredients to the Beaker.
- 2 Pulse for 5 seconds to mix.
- 3 Serve immediately.

### Shampagne

**Ingredients:**

- 300ml ice cold soda water
- 50ml lime cordial
- 50ml elderflower cordial

**Method:**

- 1 Add all the ingredients to the Beaker. Do not exceed the quantities listed.
- 2 Pulse for 2 seconds ONLY.



FP403035 MUK Rev 2 01/19

## Registering your 2 year guarantee

Your standard one year guarantee is extended for an additional 12 months when you register the product within 28 days of purchase with Morphy Richards. If you do not register the product with Morphy Richards within 28 days, your product is guaranteed for 1 year. To validate your 2 year guarantee register with us online at [www.morphyrichards.co.uk](http://www.morphyrichards.co.uk)

Or call our customer registration line quoting model and serial number, these numbers can be found on the base of the product.

**UK 0344 871 0242**  
**IRE 1800 409 119**

N.B. Each qualifying product needs to be registered with Morphy Richards individually.

Please note that the 2 year guarantee is only available in the UK and Ireland. Please refer to the one year guarantee for more information.

## Your 1 year guarantee

It is important to retain the retailer's receipt as proof of purchase. Staple your receipt to this back cover for future reference.

Please quote the following information if the product develops a fault. These numbers can be found on the base of the product.

Model no.

Serial no.

All Morphy Richards products are individually tested before leaving the factory. In the unlikely event of any appliance proving to be faulty within 28 days of purchase, it should be returned to the place of purchase for it to be replaced.

If the fault develops after 28 days and within 12 months of original purchase, you should contact the Helpline number quoting Model number and Serial number on the product, or write to Morphy Richards at the address shown.

You may be asked to return a copy of proof of purchase.

Subject to the exclusions set out below (see Exclusions), the faulty appliance will then be repaired or replaced as appropriate and dispatched usually within 7 working days of receipt.

If, for any reason, this item is replaced or repaired during the 1 year guarantee period, the guarantee on the new item will be calculated from original purchase date. Therefore it is vital to retain your original till receipt or invoice to indicate the date of initial purchase.

To qualify for the 1 year guarantee, the appliance must have been used according to the instructions supplied. For example, crumb trays should have been emptied regularly.

## Exclusions

Morphy Richards shall not be liable to replace or repair the goods under the terms of the guarantee where:

- 1 The fault has been caused or is attributable to accidental use, misuse, negligent use or used contrary to the manufacturer's recommendations or where the fault has been caused by power surges or damage caused in transit.
  - 2 The appliance has been used on a voltage supply other than that stamped on the products.
  - 3 Repairs have been attempted by persons other than our service staff (or authorised dealer).
  - 4 The appliance has been used for hire purposes or non domestic use.
  - 5 The appliance is second hand.
  - 6 Morphy Richards reserves the right not to carry out any type of servicing under the guarantee at its discretion
  - 7 Plastic filters for all Morphy Richards kettles and coffee makers are not covered by the guarantee.
  - 8 Batteries and damage from leakage are not covered by the guarantee.
- This guarantee does not confer any rights other than those expressly set out above and does not cover any claims for consequential loss or damage. This guarantee is offered as an additional benefit and does not affect your statutory rights as a consumer. Morphy Richards products are intended for household use only. See usage limitations within the location safety instructions.

## Disclaimer

Morphy Richards has a policy of continuous improvement in product quality and design. The company, therefore reserves the right to change the specification of its models at any time.



For electrical products sold within the European Community. At the end of the electrical products useful life, it should not be disposed of with household waste.

Please recycle where facilities exist. Check with your Local Authority or retailer for recycling advice in your country

**IF YOU ARE HAVING A PROBLEM  
WITH ONE OF OUR PRODUCTS,  
CALL OUR HELPLINE:**

**UK: 0344 871 0944**  
**EIRE: 1800 409 119**  
**SPARES: 0344 873 0710**

**morphy richards**

The After Sales Division  
Morphy Richards Ltd  
Mexborough, South Yorkshire,  
England, S64 8AJ

Helplines (office hours)  
UK 0344 871 0944  
Spare Parts 0344 873 0710  
Republic of Ireland 1800 409 119  
[www.morphyrichards.com](http://www.morphyrichards.com)

