

FP402050 MUK Rev 4

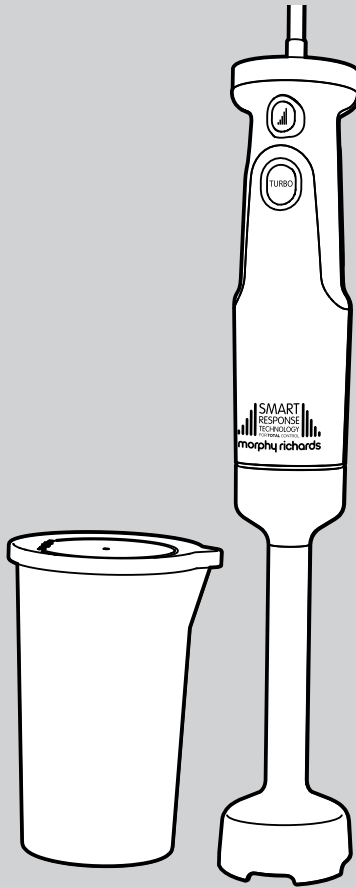
morphy richards®

smart ideas for your home



TOTAL CONTROL Hand Blender

Please read and keep these instructions for future use



For competitions, product hints and tips and more join us at



www.morphyrichards.co.uk/blog



www.facebook.com/morphyrichardsuk



[@loveyourmorphy](https://twitter.com/loveyourmorphy)

www.morphyrichards.com

* Register online for your 2 year guarantee. See the back of this instruction book for details (UK and Ireland customers only).

** Applies to serrator blade only. See back of this instruction book for details.

*** Independently tested by CATRA using the International Standard Cutting Test System to ISO 8442.5 vs a standard plain edge blade.

Health And Safety

The use of any electrical appliance requires the following common sense safety rules. Please read these instructions carefully before using the product.

- This appliance can be used by persons with reduced physical, sensory or mental capabilities, or lack of experience and knowledge, if they have been given supervision or instruction concerning the use of the appliance in a safe way and understand the hazards involved.
- Children shall not play with the appliance.
- This appliance shall not be used by children.
- Keep the appliance and cord out of reach of children.
- Do not blend for longer than the time periods recommended in 'Usage' on page 7.
- For care and cleaning refer to page 8.
- Always disconnect from the supply if left unattended and before assembling, disassembling or cleaning.
- Avoid touching moving parts. Keep hands, hair and clothing, and utensils away from the attachment blades during operation, to prevent personal injury and/or damage to the appliance.
- If the supply cord is damaged, it must be replaced by the manufacturer, its service agent or similarly qualified persons in order to avoid a hazard.

In addition, we offer the following safety advice.

Location

- Do not use outdoors or in a bathroom.
- Always locate your appliance away from the edge of the worktop.
- Do not place the beaker used with the appliance on a highly polished wooden surface as damage may occur to the surface.

Mains cable

- Do not let the mains cable hang over the edge of the worktop where a child could reach it.
- Do not let the lead run across an open space e.g. between a low socket and a table.
- Do not let the cable run across a cooker or other hot area which might damage the cable.
- The mains cable should reach from the socket to the base unit without straining the connections.

Personal safety

- Care shall be taken when handling the sharp cutting blades, emptying the beaker and during cleaning.

Other safety considerations

- Do not use the appliance for anything other than its intended purpose.

Product specific safety

- **WARNING:** The blender blades are very sharp. Handle with care when using and cleaning.
- Do not clean the attachments under running water while they are in position.
- **IMPORTANT:** Allow hot liquids to cool before adding to the blender.
- Be careful whilst hot liquid is blending or poured into the blender as it can be ejected due to sudden steaming.
- Switch off the appliance and disconnect from supply before changing accessories or approaching parts that move in use.

Electrical requirements

Check that the voltage on the rating plate of your appliance corresponds with your house electricity supply which must be A.C. (Alternating Current).

Should the fuse in the mains plug require changing, a 3 amp BS1362 fuse must be fitted.

Introduction

Thank you for your recent purchase of this Morphy Richards Total Control Hand Blender.

Your Hand Blender has a locking connection for safety. Please read the instructions for information on how to use your Hand Blender thoroughly before use.

Remember to visit www.morphyrichards.co.uk to register your product's two year guarantee.

Contents

Health And Safety	2
Introduction	3
Total Control	4
Product Overview	5
Before First Use	6
Using Your Hand Blender	6
Suitable Foods	7
Usage	7
Attachments	7
Turbo Button	7
Blending In A Saucepan	7
Hints & Tips	8
Care And Cleaning	8
Contact Us	8
Recipes	9
Guarantee	12

TOTAL CONTROL

Giving you the power to create with confidence.

Introducing the Total Control Hand Blender – the simple way to bring confidence to your cooking.

The Total Control Hand Blender allows you to create delicious smoothies and shakes, blend soups and sauces with the confidence and reassurance that Smart Response Technology delivers.

Smart Response Technology allows you to have Total Control of the blending process with the simple squeeze of a button. The Smart Response Technology gently feeds power into the blender as you need it, so there are no sudden jerks or splatters, giving you complete confidence in the kitchen.



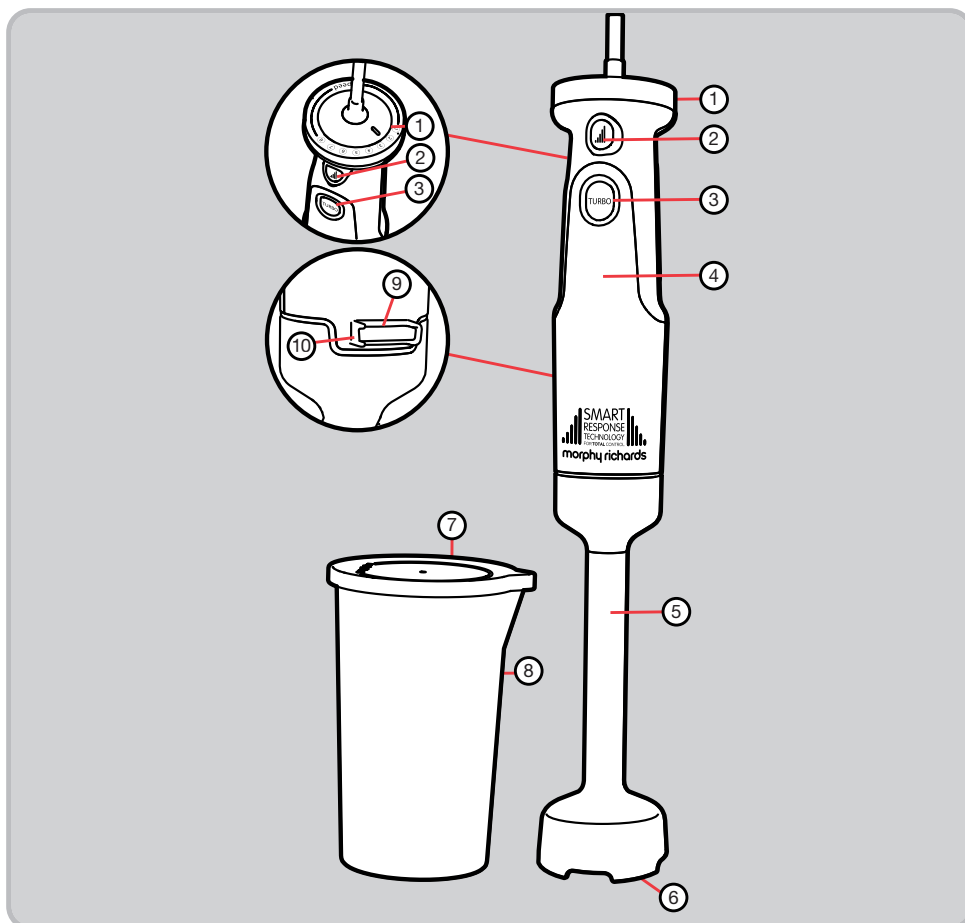
Choose the speed that best suits the job at hand using the simple twist motion Variable Speed Control, there are 8 to choose from. Even when using a higher speed you can feel assured that the Smart Response Technology feeds power in gradually building to your chosen speed for the job at hand.

When you have blended to your desired consistency simply release the button and the Total Control Hand Blender will steadily slow down and stop, ensuring no splashing and no suction.

Total Control Hand Blender, giving you the power to create with confidence.



Product Overview



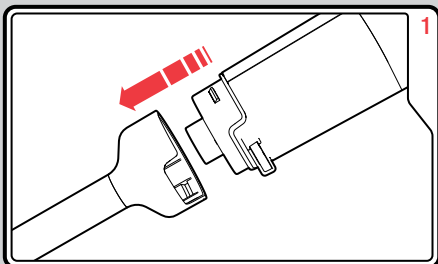
Features

- | | |
|-----------------------------|-------------------------------|
| (1) Variable Speed Control | (9) Attachment Release Button |
| (2) Precise Control Trigger | (10) Heel Rest |
| (3) Turbo Button | |
| (4) Main Unit | |
| (5) Blending Leg | |
| (6) Serrator Blade | |
| (7) Beaker Lid | |
| (8) Beaker | |

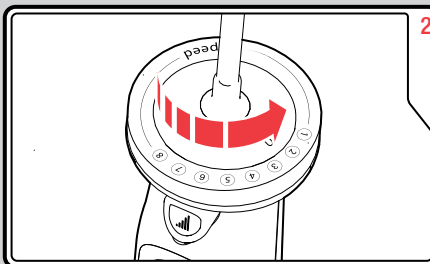
Before First Use

- **WARNING:** Carefully unpack your Total Control Hand Blender as the blades are very sharp.
- Wash the Beaker (8) and Beaker Lid (7) in hot soapy water before use. Dry all parts thoroughly before use.
- Do not fully submerge the Blending Leg in water. Wash only the Serrator Blade head (6).
- Do not immerse the Main Unit in water.
- No parts are dishwasher safe

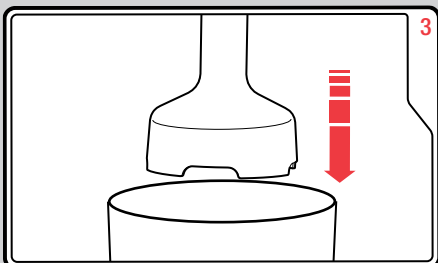
Using Your Hand Blender



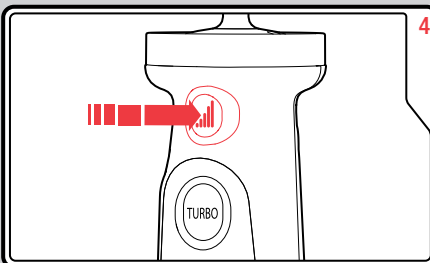
Attach the Main Unit (4) to the Blending Leg (5) and push to lock into place.



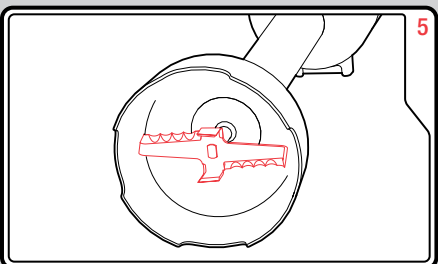
Select the speed on the Variable Speed Control (1). The Hand Blender will not start unless the Precise Control Trigger (2) or Turbo Button (3) is pressed.



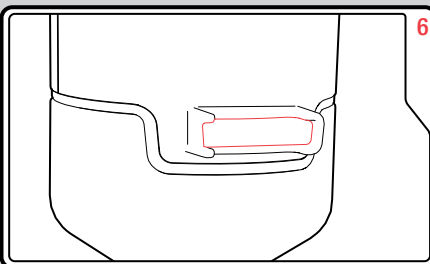
Place the Blending Leg into the food to be blended. We recommend using the Beaker (8) for the best results.



Press the Precise Control Trigger to begin blending. The speed will increase the harder you press the button.



Release the Precise Control Trigger to stop. Allow the blades to slow and stop **BEFORE** removing the Hand Blender from the food.



Unplug the Main Unit from the mains. Press the Attachment Release Button (9) and remove the Blending Leg from the Main Unit for cleaning.

Suitable Foods

- The amounts listed below should be used as a guide.

Attachment	Food	Max Quantity	Speed	Time
Blending Leg	Soup or Sauce	-	4	40-60 seconds
Blending Leg*	Milkshake	450ml	4-5	20-30 seconds
Blending Leg*	Ice	3 cubes	8	5-15 seconds
Blending Leg*	Carrots with water	200g 300ml	6	40-60 seconds

*When using the Beaker supplied

Usage

- WARNING:** Your Hand Blender is designed for intermittent use. Do not use continuously for more than 60 seconds. Allow to cool down for a minimum of 5 minutes before further use.

Attachments

Blending Leg (5)

- The Blending Leg is designed for pureeing foods such as soups, sauces, milkshakes, smoothies, baby food or crushing ice.
- The Blending Leg is not suitable for grinding hard items such as coffee beans.

Lid (7)

- If you have any leftovers, use the Beaker (8) with the supplied Lid to store food safely.
- WARNING:** The Beaker and Lid are not suitable for use in a freezer, microwave, oven or dishwasher.

Turbo Button

- The Hand Blender has 8 different speeds utilising Total Control technology, as well as a Turbo Button (3). Press the Turbo Button to run the Hand Blender at high speed for intermittent bursts.

Blending In A Saucepan

- Do not use a non stick pan. The Blending Leg may damage the non stick coating.
- Remove the saucepan from the heat.
 - To avoid excessive splashing, place the Blending Leg (5) into the food before switching your Hand Blender on.
 - Hold the pan steady with your other hand and lightly press the Precise Control Trigger (2). Start slowly, and increase the speed as needed using the Precise Control Trigger.
 - Move the Serrator Blade (6) through the food using an up and down motion.
 - Allow the Blades to stop moving before removing from the pan.
- WARNING:** Lifting the Serrator Blade out of the food while running, or using a high speed setting in a small pan could splash hot liquid. Extra care should be taken when using your Hand Blender in this manner.
 - Do not insert your Hand Blender into the food past the join between the Main Unit (4) and the Blending Leg (5).
 - Ensure the power cable does not touch any hot surfaces (including the side of the pan).

Hints & Tips

- When blending foods with strong colour (eg. carrots), the Beaker (8) or plastic parts of the appliance may become discoloured. Wipe with cooking oil to clean any discoloured parts. Wash thoroughly in hot soapy water before re-using.
- When blending using the Blending Leg (5), start the process by inserting the Blending Leg into the ingredients. This will ensure all the ingredients are pulled into the blade to be processed. Gently rotate the Blending Leg, lifting it up and down in the ingredients. Continue this movement until the mixture is of the desired consistency. Do not remove from the liquid while the blades are in motion.
- Do not lift the Blending Leg out of the mixture completely when running, as splashing may occur.

Care and Cleaning

- **WARNING:** Always unplug the appliance from the mains socket before cleaning and maintenance.
- **WARNING:** Handle the blades with care as they are sharp.
- Wash all parts except the Main Unit (4) and Blending Leg (5) in hot soapy water, dry immediately.
- Do not fully submerge the Blending Leg in water. Wash only the Serrator Blade head (6).
- Clean the Main Unit with a damp cloth and dry all the parts thoroughly.
- **WARNING:** Never immerse the Main Unit in water or any other liquid.

Contact Us

Helpline

If you are having a problem with your appliance, please call our Helpline, as we are more likely to be able to help than the store you purchased the item from.

Please have the product name, model number and serial number to hand when you call to help us deal with your enquiry quicker.

UK Helpline: 0344 871 0944

IRE Helpline: 1800 409 119

Spares: 0344 873 0710

Talk To Us

If you have any questions or comments, or want some great tips or recipe ideas to help you get the most out of your products, join us online:

Blog: www.morphyrichards.co.uk/blog

Facebook: www.facebook.com/morphyrichardsuk

Twitter: @loveyourmorphy

Website: www.morphyrichards.com

Recipes



We have developed delicious recipes for you to try with your new Total Control Hand Blender. From smoothies to soup there is something to suit every taste.

The recipes provided give you only a few suggestions of what you can make with your Hand Blender and its attachments. When you are used to working with your Hand Blender you will be able to easily adapt recipes for use from your favourite cookbooks.

Strawberry Banana Smoothie

Ingredients:

- 1 ripe banana (approx 90g) peeled, cut into chunks
- 65g strawberries washed, dried, hulled
- 2 ice cubes
- 135ml apple juice
- 200g low fat vanilla yogurt

Method:

- 1 Add all the ingredients to the Beaker in the order listed.
- 2 Fit the Blending Leg to the Main Unit and select speed 4 on the Variable Speed Control.
- 3 Place the Blending Leg into the bottom of the beaker and gently press the Precise Control Trigger. Move the Hand Blender up and down in the Beaker for 20-30 seconds, until the smoothie is blended.

Raspberry Milkshake

Ingredients:

- 80g fresh raspberries
- 100g vanilla ice cream
- 200ml semi skimmed milk

Method:

- 1 Add all the ingredients to the Beaker in the order listed.
- 2 Fit the Blending Leg to the Main Unit and select speed 4 on the Variable Speed Control .
- 3 Place the Blending Leg into the bottom of the beaker and gently press the Precise Control Trigger. Move the Hand Blender up and down in the Beaker for 20-30 seconds, until the milkshake is blended.

Leek & Potato Soup

Serves: 4

Ingredients:

- 25g butter or margarine
- 2 medium leeks (285g), sliced
- 1 small onion (100g), finely chopped
- 500g potatoes, thinly sliced
- 1.1 litres vegetable stock
- 1 tsp mixed herbs
- 1 tsp salt
- Black pepper
- Chives to garnish
- Crusty bread to serve

Method:

- 1 Melt the butter in a large saucepan (do not use non-stick), and add the leeks and onion. Gently fry without browning for 10 minutes, stirring occasionally.
- 2 Add the potatoes, stock, herbs and seasoning, bring to the boil. Cover and simmer gently for 30 minutes or until tender.
- 3 Allow to cool slightly then fit the Blending Leg to the Main Unit. Turn the Variable Speed Control to 4.
- 4 Place the Blending Leg into the pan and using the Precise Control Trigger, blend the soup until smooth, approximately 50 – 60 seconds. This can be done in the pan as long as the pan does not have a non stick coating.
- 5 Check the seasoning and garnish with a few snipped chives and serve with crusty bread.

Vegetable Sauce (For Pasta)

Serves: 4

Ingredients:

- 2 tbsp olive oil
- 1 onion (130g), chopped
- 2 carrots (160g), diced, small
- 2 celery sticks (80g), finely chopped
- 1 garlic clove, crushed
- 1 leek (120g), chopped
- 1 yellow pepper, diced
- 1 red pepper, diced
- 2x 400g cans chopped tomatoes
- ½ tbsp balsamic vinegar
- ½ tbsp caster sugar
- 2 tsp oregano
- 1 tsp mixed herbs
- Salt and pepper
- Fresh boiled pasta to serve
- Parmesan cheese to serve

Method:

- 1 Heat the oil in a large saucepan (do not use non-stick) and gently cook the onion, carrot, celery, garlic and leek for 5 minutes without browning. Stir occasionally.
- 2 Place the lid on the pan and cook for 20 minutes, stirring occasionally. Add the chopped peppers and cook gently for a further 10 minutes with the lid on.
- 3 Add the tomatoes, herbs, sugar and vinegar to the pan. Season with salt and pepper and simmer with the lid on for 45 minutes, or until the carrot and celery are softened.
- 4 Cook the pasta according to the pack instructions.
- 5 Use the Blending Leg at speed 4 on the Variable Speed Control to make a smooth sauce. This can be done in the pan as long as the pan does not have a non stick coating. Start the hand blender using the Precise Control Trigger, gently moving it across the pan until the desired consistency is achieved. For a smooth sauce, this should take about a minute.
- 6 Drain the pasta then stir the sauce through it. Heat through if necessary then serve immediately with Parmesan cheese.

Matriciana Sauce (For Pasta)

Serves: 4

Ingredients:

- 1 onion (130g) finely chopped
- 1 garlic clove, crushed
- ½ green chilli, de-seeded and finely chopped
- 1½ tbsp extra virgin olive oil
- 100g bacon, rind removed and chopped
- 400g can plum tomatoes
- 100ml (120g) passata
- 2 tbsp white wine
- Salt and freshly ground black pepper
- Fresh boiled pasta to serve
- Parmesan cheese to serve

Method:

- 1 Place the oil in a large saucepan (do not use non-stick), and heat for a few minutes.
- 2 Gently fry the onion, garlic and chilli for 2- 3 minutes without browning, stirring occasionally with a wooden spoon.
- 3 Add the chopped bacon to the pan and fry for a further minute. Place the lid on the pan and cook over a medium heat for 5 minutes.
- 4 Add the plum tomatoes, passata and wine, season with a little salt and pepper to taste.
- 5 Place the lid on the pan and simmer gently for 25 minutes, or until the onions are tender.
- 6 Ten minutes before the sauce is ready, cook the pasta according to the pack instructions.
- 7 Use the Blending Leg at speed 4 on the Variable Speed Control to make a smooth sauce. This can be done in the pan as long as the pan does not have a non stick coating. Start the hand blender using the Precise Control Trigger, gently moving it across the pan until the desired consistency is achieved. For a smooth sauce, this should take about a minute.
- 8 Drain the pasta then stir the sauce through it. Heat through if necessary then serve immediately with Parmesan cheese.

FP402050 MUK Rev 4 01/19

Lifetime Blade Guarantee

The 'Serrator Blade' is warranted to be free from defects in materials and workmanship for life. This warranty covers the original purchaser only and is not assignable or transferable to any other party. This warranty is available to consumers who use the 'Serrator Blades' for non-commercial household purposes. This warranty does not cover any damage caused by accident, misuse or any use other than as described in your owner's manual, or damage resulting from failure to maintain and clean this product as specified in your owner's manual.

Registering Your 2 Year Guarantee

Your standard one year product guarantee is extended for an additional 12 months when you register the product within 28 days of purchase with Morphy Richards. If you do not register the product with Morphy Richards within 28 days, your product is guaranteed for 1 year. To validate your 2 year guarantee register with us online at www.morphyrichards.co.uk

Or call our customer registration line

UK 0344 871 0242

IRE 1800 409 119

N.B. Each qualifying product needs to be registered with Morphy Richards individually.

Please note that the 2 year guarantee is only available in the UK and Ireland. Please refer to the one year guarantee for more information.

Your 1 Year Guarantee

It is important to retain the retailer's receipt as proof of purchase. Staple your receipt to this back cover for future reference.

Please quote the following information if the product develops a fault. These numbers can be found on the base of the product.

Model no.

Serial no.

All Morphy Richards products are individually tested before leaving the factory. In the unlikely event of any appliance proving to be faulty within 28 days of purchase, it should be returned to the place of purchase for it to be replaced.

If the fault develops after 28 days and within 12 months of original purchase, you should contact the Helpline number quoting Model number and Serial number on the product, or write to Morphy Richards at the address shown.

You may be asked to return a copy of proof of purchase.

Subject to the exclusions set out below (see Exclusions), the faulty appliance will then be repaired or replaced as appropriate and dispatched usually within 7 working days of receipt.

If, for any reason, this item is replaced or repaired during the 1 year guarantee period, the guarantee on the new item will be calculated from original purchase date. Therefore it is vital to retain your original till receipt or invoice to indicate the date of initial purchase.

To qualify for the 1 year guarantee, the appliance must have been used according to the instructions supplied. For example, crumb trays should have been emptied regularly.

Exclusions

Morphy Richards shall not be liable to replace or repair the goods under the terms of either the Lifetime Blade Guarantee or the 1 or 2 Year Guarantee where:

- 1 The fault has been caused or is attributable to accidental use, misuse, negligent use or used contrary to the manufacturer's recommendations or where the fault has been caused by power surges or damage caused in transit.
 - 2 The appliance has been used on a voltage supply other than that stamped on the products.
 - 3 Repairs have been attempted by persons other than our service staff (or authorised dealer).
 - 4 The appliance has been used for hire purposes or non domestic use.
 - 5 The appliance is second hand.
 - 6 Morphy Richards reserves the right not to carry out any type of servicing under the guarantee at its discretion
 - 7 Batteries and damage from leakage are not covered by the guarantee.
- These guarantees do not confer any rights other than those expressly set out above and do not cover any claims for consequential loss or damage. These guarantees are offered as an additional benefit and do not affect your statutory rights as a consumer. Morphy Richards products are intended for household use only. See usage limitations within the location safety instructions.

Disclaimer

Morphy Richards has a policy of continuous improvement in product quality and design. The company, therefore reserves the right to change the specification of it's models at any time.



For electrical products sold within the European Community. At the end of the electrical products useful life, it should not be disposed of with household waste.

Please recycle where facilities exist. Check with your Local Authority or retailer for recycling advice in your country

**IF YOU ARE HAVING A PROBLEM
WITH ONE OF OUR PRODUCTS, CALL
OUR HELPLINE:**

**UK: 0344 871 0944
EIRE: 1800 409 119
SPARES: 0344 873 0710**

morphy richards

The After Sales Division
Morphy Richards Ltd
Mexborough, South Yorkshire,
England, S64 8AJ

Helplines (office hours)
UK 0344 871 0944
Spare Parts 0344 873 0710
Republic of Ireland 1800 409 119
www.morphyrichards.com

