

Important safety instructions



• **WARNING: Care should be taken when using the appliance due to emission of steam.**

- **WARNING: Misuse of the appliance could cause personal injury.**
- This appliance can be used by children aged from 8 years and above and persons with reduced physical, sensory or mental capabilities or lack of experience or knowledge if they have been given supervision or instruction concerning use of the appliance in a safe way and understand the hazards involved.
- Children shall not play with the appliance.
- Cleaning and user maintenance shall not be made by children without supervision.
- Keep the Garment Steamer and its cord out of reach of children less than 8 years of age at all times.
- If the supply cable is damaged, it must be replaced by the manufacturer or its service agent in order to avoid a hazard.
- The Garment Steamer must not be left unattended while it is connected to the supply mains.
- The plug must be removed from the socket before filling the Garment Steamer with water.
- When placing the Garment Steamer on its base, ensure that the surface on which the base is placed is stable.
- The Garment Steamer is not to be used if it has been dropped, if there are visible signs of damage or it is leaking.



CAUTION - HOT: Burns can occur from touching hot parts, hot water or steam.

• **WARNING: To avoid electric shock, do not immerse appliance in water / liquid.**

Electrical requirements and mains cable

- Check that the voltage on the rating plate of your appliance corresponds with your house electricity supply which must be A.C. (Alternating current).
- Do not operate with a damaged supply cord or grommet, it must be replaced by the manufacturer, its service agent or similarly qualified person in order to avoid a hazard.
- Do not let the mains lead come into contact with the hot hotplate of the Garment Steamer.
- Should the fuse in the mains plug require changing, a 13 amp BS1362 fuse must be fitted.
- **WARNING: This appliance must be earthed.**

PLEASE READ ALL INSTRUCTIONS AND KEEP FOR REFERENCE

RN361000 MUK Rev1 09/18

Registering your guarantee

Your standard 1 year guarantee is extended for an additional 12 months when you register the product within 28 days of purchase with Morphy Richards. If you do not register the product with Morphy Richards within 28 days, your product is guaranteed for 1 year. To validate your 2 year guarantee register with us online at www.morphyrichards.co.uk/support Or call our customer registration line
UK 0344 871 0242
IRE 1800 409 119

N.B. Each qualifying product needs to be registered with Morphy Richards individually.

Please note that the 2 year guarantee is only available in the UK and Ireland. Please refer to the 1 year guarantee for more information.

Your 1 year guarantee

It is important to retain the retailer's receipt as proof of purchase. Staple your receipt to this back cover for future reference.

Please quote the following information if the product develops a fault. These numbers can be found on the base of the product.

Model no. Serial no.

All Morphy Richards products are individually tested before leaving the factory. In the unlikely event of any appliance proving to be faulty within 28 days of purchase, it should be returned to the place of purchase for it to be replaced.

If the fault develops after 28 days and within 12 months of original purchase, you should contact the Helpline number quoting Model number and Serial number on the product, or write to Morphy Richards at the address shown.

You may be asked to return a copy of proof of purchase.

Subject to the exclusions (see Exclusions), the faulty appliance will then be repaired or replaced as appropriate and dispatched usually within 7 working days of receipt.

If, for any reason, this item is replaced or repaired during the 1 year guarantee period, the guarantee on the new item will be calculated from original purchase date. Therefore it is vital to retain your original till receipt or invoice to indicate the date of initial purchase.

To qualify for the 1 year guarantee, the appliance must have been used according to the instructions supplied.

Exclusions

Morphy Richards shall not be liable to replace or repair the goods under the terms of the guarantee where:

- 1 The fault has been caused or is attributable to accidental use, misuse, negligent use or used contrary to the manufacturer's recommendations or where the fault has been caused by power surges or damage caused in transit.
 - 2 The fault has been caused by using water other than that recommended by Morphy Richards.
 - 3 The fault is caused by limescale build-up.
 - 4 The cables are damaged due to wrapping too tightly or excessive kinking.
 - 5 The appliance has been used on a voltage supply other than that stamped on the products.
 - 6 Repairs have been attempted by persons other than our service staff (or authorised dealer).
 - 7 The appliance has been used for hire purposes or non domestic use.
 - 8 The appliance is second hand.
 - 9 Morphy Richards reserves the right not to carry out any type of servicing under the guarantee at its discretion.
- This guarantee does not confer any rights other than those expressly set out above and does not cover any claims for consequential loss or damage. This guarantee is offered as an additional benefit and does not affect your statutory rights as a consumer. Morphy Richards products are intended for household use only. See usage limitations within the location safety instructions.

Disclaimer

Morphy Richards has a policy of continuous improvement in product quality and design. The company, therefore reserves the right to change the specification of its models at any time.



For electrical products sold within the European Community. At the end of the electrical products useful life, it should not be disposed of with household waste.

Please recycle where facilities exist. Check with your Local Authority or retailer for recycling advice in your country.

Contact us

Helpline

If you are having a problem with your appliance, please call our Helpline, as we are more likely to be able to help than the store you purchased the item from. Please have the product name, model number and serial number to hand when you call to help us deal with your enquiry quicker.

UK Helpline: **0344 871 0944**
 IRE Helpline: **1800 409 119**
 Spares: **0344 873 0710**

Talk to us

If you have any questions or comments, or want some great tips to help you get the most out of your products, join us online:

Blog: www.morphyrichards.co.uk/blog
 Facebook: www.facebook.com/morphyrichardsuk
 Twitter: [@loveyourmorphy](https://twitter.com/loveyourmorphy)
 Website: www.morphyrichards.com
 Address: **The After Sales Division**
Morphy Richards Ltd
Mexborough,
South Yorkshire,
England, S64 8AJ




RN361000 MUK Rev1

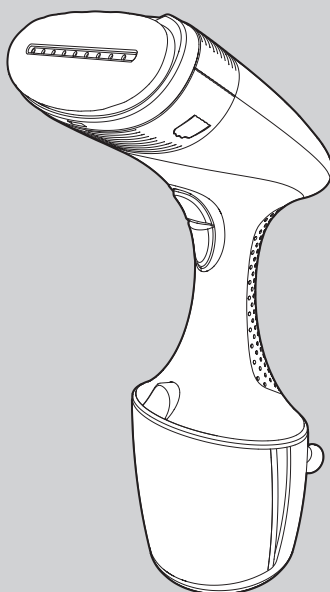
morphy richards[®]
smart ideas for your home



*Register at www.morphyrichards.co.uk/support
UK and Ireland customers only

Garment Steamer

 Please read and keep these instructions for future use



Register your guarantee online: www.morphyrichards.co.uk/support
We'll keep you updated with special offers, competitions and important product information.

If you experience any problems with this Garment Steamer, do not return to the store.
Please contact our help line who will be happy to help:

UK: 0344 871 0944 IRE: 1800 409 119

We do stock spare brush attachments, so if you need a replacement please call **0344 873 0710**.



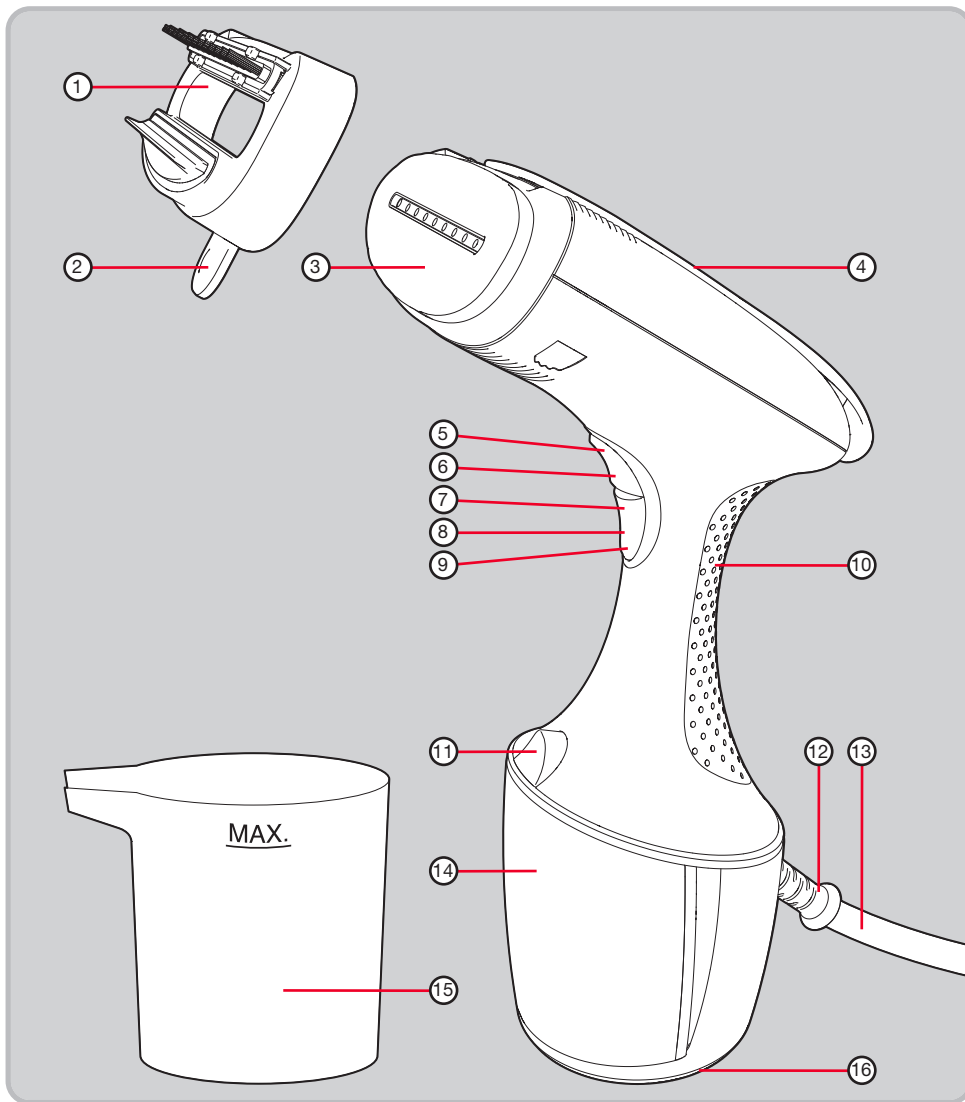
IMPORTANT: To reduce limescale damage we recommend using distilled, deionised or demineralised water only.

Never use battery topping up fluid or water containing any substances like starch, sugar, fragrant additives or defrosted water from a refrigerator.

Failure to maintain your Garment Steamer will invalidate your guarantee.

www.morphyrichards.com

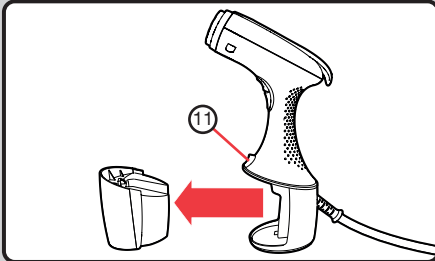
Garment Steamer overview



- | | | |
|--|---------------------------------------|---------------------------|
| (1) Brush attachment | (6) Steam boost button | (12) Power cord grommet |
| (2) Brush attachment removal tab | (7) Blue steam indicator light | (13) Power cord |
| (3) Hotplate | (8) Steam button | (14) Removable water tank |
| (4) Creaser (with steam hole underneath) | (9) Green temperature indicator light | (15) Filling beaker |
| (5) Red steam boost indicator light | (10) Handle | (16) Base |
| | (11) Water tank release button | |

Using the Garment Steamer

1) Filling the tank



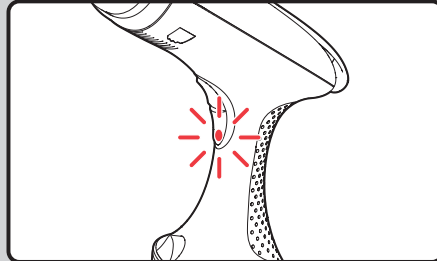
Make sure the Garment Steamer is not plugged in. Press the water tank release button (11) to remove the water tank (14). Lift the bung out of the filling hole and fill the water tank via the filling hole using the filling beaker (15) provided. Then, replace the bung and firmly press the water tank back into position.

WE RECOMMEND USING DISTILLED, DEIONISED OR DEMINERALISED WATER ONLY.

Never use battery topping up fluid or water containing any substances like starch, sugar, fragrant additives or defrosted water from a refrigerator.

NOTE: Please see point 2 of 'Exclusions' on page 6.

2) Switching on

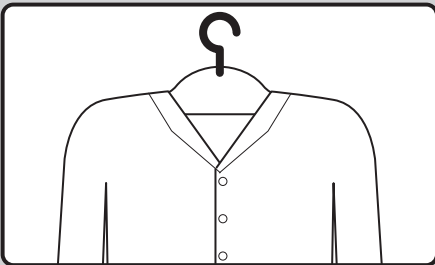


Plug in the Garment Steamer and switch on at the mains.

The green temperature indicator light (9) will flash for approximately 40 seconds until the Garment Steamer has achieved optimal temperature. The appliance is ready to use when the green power light remains constant.

NOTE: Ensure the blue steam indicator light (7) and the red steam boost indicator light (5) are NOT illuminated at this point, otherwise the unit will start steaming automatically once the temperature is reached. Press the steam button (8) or steam boost button (6) to turn them off if necessary.

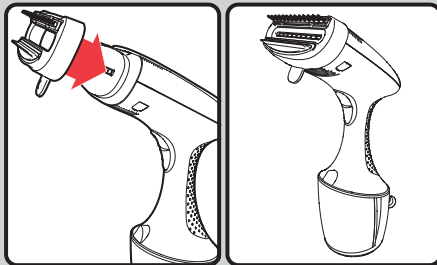
3) Hanging the garment



Using a non-metal coat hanger, hang the garment to be steamed.

CAUTION: If hanging the garment against a vertical surface such as a door, take care not to damage the surface with steam.

4) Brush accessory



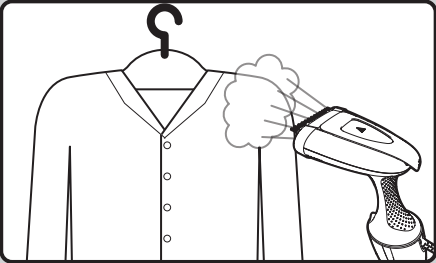
If required, attach the brush attachment (1) to relax the fibres of the garment. Push the attachment onto the hotplate (3) and click it into place.

To remove again, pull the brush attachment removal tab (2).

Brush the garment before steaming.

Using the Garment Steamer (continued)

5) Steaming



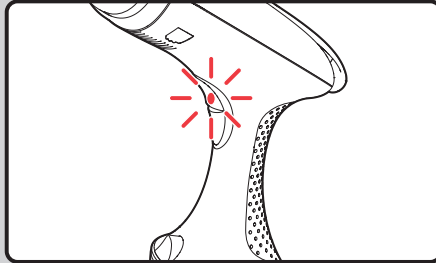
To begin steaming, press and release the steam button (8). The blue steam indicator light (7) will illuminate and steam will be emitted from the hotplate (3). To stop steaming, press and release the steam button again.

Hold the hotplate around 1 inch from the surface of the garment. Pass the Garment Steamer over the garment whilst steaming, you may need to do this a few times to remove more stubborn creases.

WARNING: Do not direct steam at animals or people. Do not steam clothes that are being worn.

Without steaming, occasionally brush the garment with the brush accessory to help relax the fibres.

6) Steam boost

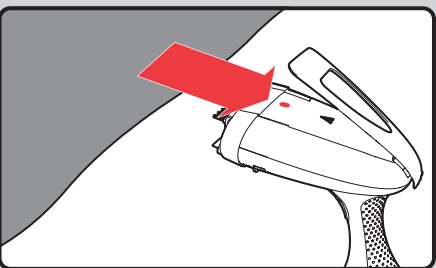


Press the steam boost button (6) for extra steam boost for stubborn creases / heavy fabrics.

To begin the steam boost, press and release the steam boost button. The red steam boost indicator light (5) will illuminate and extra steam will be emitted from the hotplate (3). To stop the steam boost, press and release the steam boost button again.

NOTE: To stop steaming completely, both the blue steam indicator light (7) and the red steam boost indicator light (5) must be off.

Using the creaser



Press down on the rear end of the creaser (4) to lift it up. This reveals a steam hole underneath. With the creaser lifted, slip a folded garment between the creaser and the Garment Steamer and lower the creaser. To begin steaming, press and release the steam button (8). The blue steam indicator light (7) will illuminate and steam will be emitted from the hotplate (3) and the steam hole. Draw the Garment Steamer along the folded edge of the garment to create a crease. To stop steaming, press and release the steam button again.

Maintenance

Emptying and storing

When you have finished steaming, unplug and empty all water from your Garment Steamer. When cool, store the Garment Steamer on its base (16) with the power cord (13) wrapped loosely around the handle (10).

NOTE: Please see point 4 of 'Exclusions' on page 8.

Cleaning the hotplate

To clean a stainless steel hotplate

We recommend using a generally available gentle chrome, silver or stainless steel cleaner. Always follow the manufacturer's instructions.

If any man-made fibres fuse to the hotplate (3), pass it over a clean piece of cotton to draw the deposit off the surface.

To clean the exterior

Allow the unit to cool and wipe over with a damp cloth and mild detergent, then wipe dry.