

RN333024 MUK Rev1

morphy richards®

smart ideas for your home

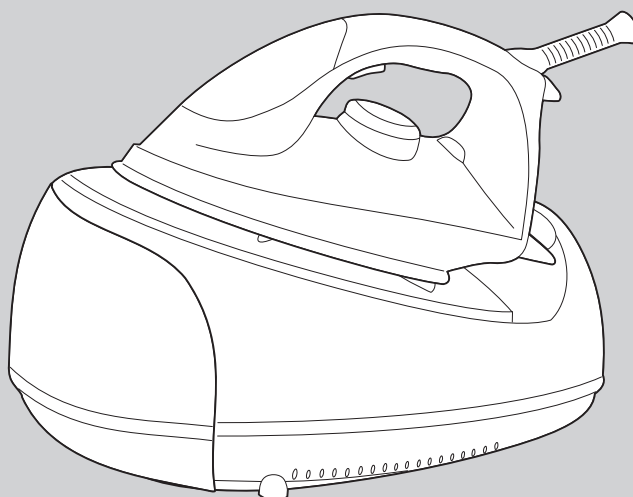


Jet Steam

Steam Generator

*Register at www.morphyrichards.co.uk/support
UK and Ireland customers only

 Please read and keep these instructions for future use



Register your guarantee online: www.morphyrichards.co.uk/support
We'll keep you updated with special offers, competitions and important product information.



IMPORTANT: To reduce limescale damage we recommend using deionised, distilled or demineralised water, available at most large supermarkets. This is particularly important if you live in a hard water area.

Never use battery topping up fluid or water containing any substances like starch, sugar, fragrant additives or defrosted water from a refrigerator.

Remember to clean your steam generator and change the antiscald cartridge.

Failure to adhere to the above guidelines will invalidate your guarantee.

Purchase spare anti-scale cartridges to keep your product performing like new for longer. Available by calling our Spares Helpline on 0344 873 0710.

**IF YOU HAVE ANY DIFFICULTY WITH THIS PRODUCT,
INSTEAD OF TAKING IT BACK TO THE RETAILER, TRY:**

1. The instruction booklet
2. Refer to www.morphyrichards.com
3. Or call our helpline: UK: 0344 871 0944, EIRE: 1800 409 119 (For UK & Eire customers only)

www.morphyrichards.com

Important safety instructions

The use of any electrical appliance requires the following common sense safety rules.
Please read these instructions carefully before using the product.

- **WARNING: Disconnect from the mains supply before carrying out any routine maintenance.**
- **WARNING: Misuse of the appliance could cause personal injury.**
- This appliance can be used by children aged from 8 years and above and persons with reduced physical, sensory or mental capabilities, or lack of experience or knowledge, if they have been given supervision or instruction concerning the use of the appliance in a safe way and understand the hazards involved. Children shall not play with the appliance. Cleaning and user maintenance shall not be made by children without supervision.
- Keep the steam generator and its cord out of reach of children less than 8 years of age at all times.
- The steam generator must not be left unattended while it is connected to the supply mains.
- The steam generator must be used and rested on a stable surface.
- When placing the iron on the steam generator base, ensure that the surface on which the base is placed is stable.
- The steam generator is not to be used if it has been dropped, if there are visible signs of damage or it is leaking.
- The filling aperture may be opened during use, due to the design of the system.
- Do not operate with a damaged steam/supply cord or grommet, it must be replaced by the manufacturer, its service agent or similarly qualified person in order to avoid a hazard.

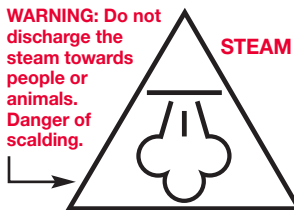
Personal safety



CAUTION - HOT:
Burns can occur from touching hot parts, hot water or steam, or the iron rest plate.

- **WARNING: Never direct steam at electrical components or fittings. If in doubt about the suitability of steam for cleaning an appliance, contact the appliance manufacturer for advice prior to cleaning.**
- **WARNING: Never touch the plug or cable with wet hands.**
- **WARNING: Nozzles and tools will be hot after use. Allow to cool before attempting to remove.**

- **WARNING: Do not discharge the steam towards people or animals. Danger of scalding.**



- To protect against fire, electric shock and personal injury, do not immerse cord, plug or steam generator in water or other liquid.
- The plug should be removed from the wall socket after use, before cleaning, filling or changing the accessories, or carrying out user maintenance.

Location

- Do not use or keep this product outside.
- Do not store the appliance near hot surfaces eg. ovens or heating appliances.

Mains cable

- **WARNING: A damaged or severed mains cable fitted with a plug should never be connected to the mains supply. It must be destroyed, as a damaged cable becomes hazardous if connected to a power socket.**
- Do not let the mains lead come into contact with the hot soleplate of the iron.
- Do not allow the mains lead to become strained.

Product safety

- **WARNING: Always test on an inconspicuous area first. Never use on materials that can not resist high temperature, such as dralon, natural fur etc.**
- Never modify the appliance in any way.

Other safety considerations

- Do not use any chemical detergents, perfumes, alcohol or descaler etc in water.
- Repairs to electrical appliances are only to be undertaken by trained personnel.

- Unprofessional repairs can be dangerous for users.
- Use only genuine Morphy Richards spare parts and accessories.
- The appliance must not be left unattended while connected to the supply mains.
- This appliance is intended for domestic use only. Misuse or use for commercial or any other purpose will render the guarantee invalid.

Electrical requirements

- Check that the voltage on the rating plate of your appliance corresponds with your house electricity supply which must be A.C. (Alternating Current).
- If the socket outlets in your home are not suitable for the plug supplied with this appliance, the plug should be removed by trained authorised personnel and the appropriate one fitted.
- **WARNING: This appliance must be earthed.**
- Should the fuse in the mains plug require changing, replace it with a fuse of the same rating as originally fitted.

Contents

Health and safety 2

Electrical requirements 3

Steam generator overview / Features 4

Temperature guide 4

Location 5

Before use 5

Using the Steam Generator 5 & 6

Features 7

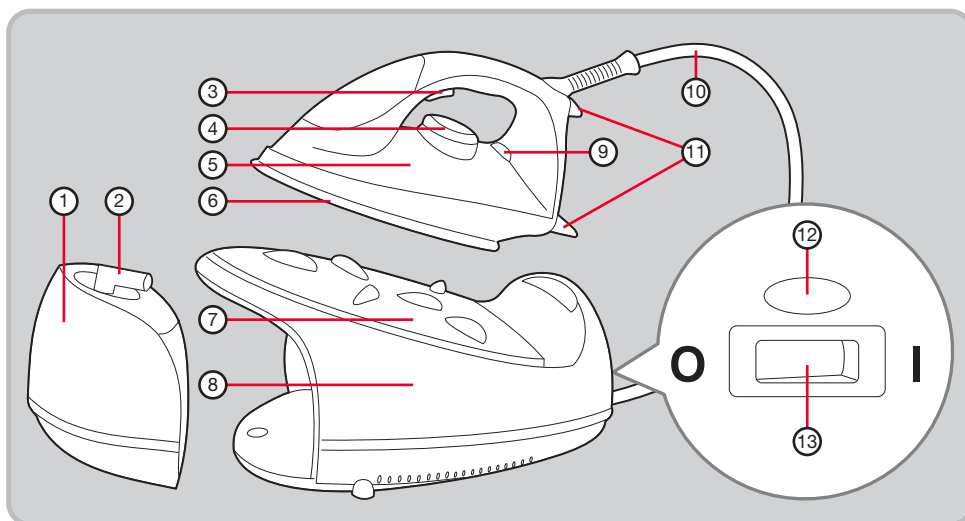
Maintenance 7

Emptying and storing 7

Guarantee 8

Contact us 8

Steam generator overview



- | | |
|------------------------------|--|
| (1) Water tank | (8) Base Unit |
| (2) Anti-scale filter | (9) Temperature indicator light |
| (3) Steam trigger | (10) Steam supply cord |
| (4) Temperature control dial | (11) Iron heel rests |
| (5) Iron | (12) Boiler ready indicator light |
| (6) Soleplate | (13) Power switch with indicator light |
| (7) Iron rest plate | |

Temperature guide

Heat setting markings on the temperature dial of all Morphy Richards irons match those of the International Textile Care Labelling Code

Symbol	(120°C Max) Cool	(160°C Max) Warm	(210°C Max) Hot
Control dial positions	Do not iron	•	••
Fabric	Nylon, Acetates, synthetic fabrics	Wool, Polyester mixtures	Cotton, Linen Rayon, Rayon mixtures
Ironing	Iron on wrong side, if moisture required, use damp cloth (not Acetate)		Fabrics requiring this setting usually require steam pressing.
Steaming		←————→	

Location

Locate the steam generator horizontally on the iron rest plate of your ironing board (if large enough) or on a heat resistant stand at the same height as your ironing board or below it. Always ensure the steam generator is on a firm surface when ironing.

WARNING: Do not use the product on a surface which could be damaged by heat or steam such as a polished wood surface.

Before use

Remove any protective sticker from the soleplate and the base unit, if any.

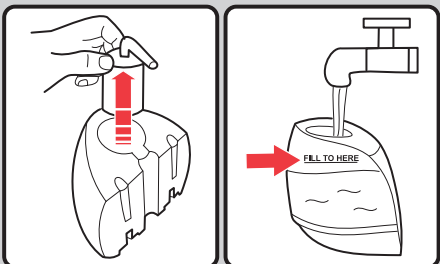
Unwind and straighten the power cord and supply cord.

Textiles and clothes are supposed to carry ironing instructions. If they don't, you should follow the Temperature guide on page 3, but be sure to test the temperature by ironing the hem of the garment or similar discreet area first.

We recommend for first time ironing that you iron over an old towel.

Using the Steam Generator

1) Filling the water tank



Remove the detachable water tank (2). Lift the anti-scale cartridge (3) out of the water tank and fill the tank with water through the space where the cartridge was. Fill to the max fill line. Reposition the anti-scale cartridge and the water tank.

IN HARD WATER AREAS, WE RECOMMEND USING DEIONISED, DISTILLED OR DEMINERALISED WATER.

Never use battery topping up fluid or water containing any substances like starch, sugar, fragrant additives or defrosted water from a refrigerator.

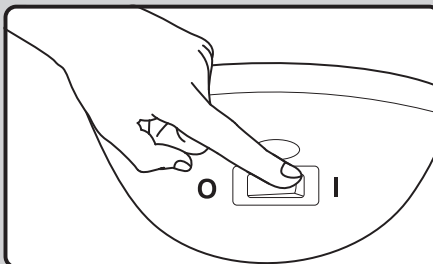
NOTE: Please see point 2 of 'Exclusions' on page 8.

Re-filling during use

When the water level becomes low, the pump begins to emit a clicking noise. This is due to air being pumped instead of water and is quite normal.

Refilling can be done whilst the appliance is in operation. It is not necessary to wait for the appliance to cool down. Slide out the water tank and fill (see filling instructions).

2) Switching on

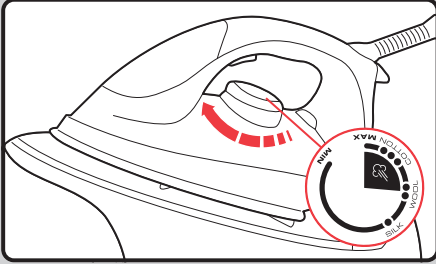


Plug the appliance into a mains outlet and press the power switch with indicator light (13). The switch will illuminate.

The boiler ready indicator light (12) situated above the power switch will also illuminate, indicating the boiler is on its heating cycle and will go out when the required temperature is reached.

Using the Steam Generator (continued)

3) Temperature Selection

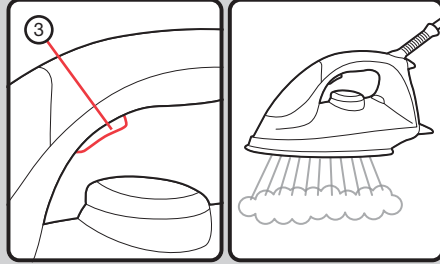


Turn the temperature dial (4) to suit the garment (see 'Temperature guide' on page 4). The appliance is ready to use when the iron temperature indicator light (9) switches off.

It is advised to begin with 'cool' fabrics (see above) and work up to higher settings. An iron heats up quicker than it cools down so you'll save time and electricity.

If you turn the temperature dial (4) down from a hot setting to a cooler setting, wait until the temperature indicator light (9) goes out (indicating the correct temperature has been reached) before you continue ironing.

4) Ironing with Steam

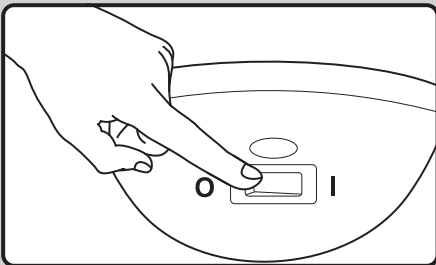


Press and hold the steam trigger (3) to release steam. There will be a slight delay whilst the steam is drawn from the base and along the steam cord to the iron's soleplate (6).

NOTE: Residual steam - as the steam has a long distance to travel along the steam cord it is likely that there will still be some steam coming from the soleplate for a short while after you have released the trigger. This is normal and will eventually stop after several seconds.

WARNING: The steam supply cord will get hot during use.

5) Switching off



To switch the iron off, turn the temperature dial (4) on the iron (5) in an anti-clockwise direction to 'Min'.

Press the power switch (13) to switch to off.

The power indicator light will be extinguished.

Disconnect the plug from the mains outlet.

Features

Dry ironing

To use your steam generator as a dry iron only, follow steps 2 and 3 of 'Using the Steam Generator' on pages 5 and 6. You do not need to put water in the tank or select a steam level.

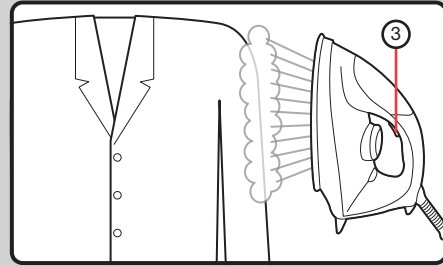
Steam function

During steaming, small amounts of water may be ejected from the soleplate (6). This is normal and can be avoided by only using the iron when it is at the correct temperature (the temperature indicator light (9) on the iron (5) goes out when ready).

Sudden jolts of the boiler unit can also cause water droplets on the soleplate; therefore, do not move the base unit during ironing.

Vertical steam

Vertical steam is useful for removing creases from hanging clothes, curtains, upholstery, etc. Hold the iron (5) between 1cm and 2cm away from the item and press and hold the steam trigger (3) for vertical steam.



WARNING: Do not use the vertical steam feature on clothes that are being worn.

Maintenance

To clean a coated soleplate

Do not use scouring powder or solution as this could cause damage to the coating.

If any man-made fibres fuse to the soleplate (6), set the iron at the MAX position and pass it over a clean piece of cotton to draw the deposit off the surface.

To clean the exterior

Allow the unit to cool and wipe over with a damp cloth and mild detergent, then wipe dry.

Replacing the anti-scale filter

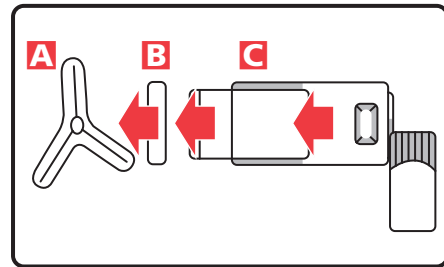
The anti-scale filter is designed to reduce the build-up of limescale which occurs during steam ironing. This will prolong the working life of your iron. However, please note that the anti-scale filter will not completely stop the natural process of limescale build-up.

How often you need to replace the anti-scale filter depends on how often you use your iron with its steam functions and how 'hard' your water supply is. Water hardness varies greatly from one area to another. For advice on the relative hardness of your water, contact your local water supplier.

If you iron more or less frequently, then you should alter the interval between refills accordingly.

To obtain replacement anti-scale refills, telephone our spares number on: **0344 873 0710**.

If a new re-fill is not available, you may continue operating the appliance but scale will build up in the system. Replace the anti-scale refill as soon as possible.



- 1 Disconnect the appliance from the mains outlet.
- 2 Slide out the tank and remove the anti-scale filter.
- 3 Pull the plate from the end of the filter **A**.
- 4 Remove the foam pad **B** and slide out the spent anti-scale sleeve **C**.
- 5 Place the refill into the filter, reposition the foam pad and clip the plate onto the filter, making sure it locks in position.
- 6 Connect the appliance to the mains supply and switch on.
- 7 Replace the water tank (1). The unit is now ready to use or store.

Emptying and storing

Allow the appliance to cool.

Remove the detachable water tank (1) and empty it. Once the water tank is empty, re-attach it to the base unit (8).

WARNING: Do not pull too tightly on the steam supply cord or on the cable support when looping the power cord and steam supply cord. Damage to cables caused by wrapping too tightly will not be covered by the guarantee.

RN333024 MUK Rev1 04/20

Registering your guarantee

Your standard 1 year guarantee is extended for an additional 12 months when you register the product within 28 days of purchase with Morphy Richards. If you do not register the product with Morphy Richards within 28 days, your product is guaranteed for 1 year. To validate your 2 year guarantee register with us online at www.morphyrichards.co.uk/support Or call our customer registration line
UK 0344 871 0242
IRE 1800 409 119

N.B. Each qualifying product needs to be registered with Morphy Richards individually.

Please note that the 2 year guarantee is only available in the UK and Ireland. Please refer to the 1 year guarantee for more information.

Your 1 year guarantee

It is important to retain the retailer's receipt as proof of purchase. Staple your receipt to this back cover for future reference.

Please quote the following information if the product develops a fault. These numbers can be found on the base of the product.

Model no. Serial no.

All Morphy Richards products are individually tested before leaving the factory. In the unlikely event of any appliance proving to be faulty within 28 days of purchase, it should be returned to the place of purchase for it to be replaced.

If the fault develops after 28 days and within 12 months of original purchase, you should contact the Helpline number quoting Model number and Serial number on the product, or write to Morphy Richards at the address shown.

You may be asked to return a copy of proof of purchase.

Subject to the exclusions (see Exclusions), the faulty appliance will then be repaired or replaced as appropriate and dispatched usually within 7 working days of receipt.

If, for any reason, this item is replaced or repaired during the 1 year guarantee period, the guarantee on the new item will be calculated from original purchase date. Therefore it is vital to retain your original till receipt or invoice to indicate the date of initial purchase.

To qualify for the 1 year guarantee, the appliance must have been used according to the instructions supplied. For example, water should be emptied after each use.

Exclusions

Morphy Richards shall not be liable to replace or repair the goods under the terms of the guarantee where:

- 1 The fault has been caused or is attributable to accidental use, misuse, negligent use or used contrary to the manufacturer's recommendations or where the fault has been caused by power surges or damage caused in transit.
 - 2 The fault has been caused by using water other than that recommended by Morphy Richards.
 - 3 The fault is caused by limescale build-up.
 - 4 The cables are damaged due to wrapping too tightly or excessive kinking.
 - 5 The appliance has been used on a voltage supply other than that stamped on the products.
 - 6 Repairs have been attempted by persons other than our service staff (or authorised dealer).
 - 7 The appliance has been used for hire purposes or non domestic use.
 - 8 The appliance is second hand.
 - 9 Morphy Richards reserves the right not to carry out any type of servicing under the guarantee at its discretion.
- This guarantee does not confer any rights other than those expressly set out above and does not cover any claims for consequential loss or damage. This guarantee is offered as an additional benefit and does not affect your statutory rights as a consumer. Morphy Richards products are intended for household use only. See usage limitations within the location safety instructions.

Disclaimer

Morphy Richards has a policy of continuous improvement in product quality and design. The company, therefore reserves the right to change the specification of its models at any time.



For electrical products sold within the European Community. At the end of the electrical products useful life, it should not be disposed of with household waste.

Please recycle where facilities exist. Check with your Local Authority or retailer for recycling advice in your country.

Contact us

Helpline

If you are having a problem with your appliance, please call our Helpline, as we are more likely to be able to help than the store you purchased the item from. Please have the product name, model number and serial number to hand when you call to help us deal with your enquiry quicker.

UK Helpline: **0344 871 0944**
 IRE Helpline: **1800 409 119**
 Spares: **0344 873 0710**

Talk to us

If you have any questions or comments, or want some great tips to help you get the most out of your products, join us online:

Blog: www.morphyrichards.co.uk/blog
 Facebook: www.facebook.com/morphyrichardsuk
 Twitter: [@loveyourmorphy](https://twitter.com/loveyourmorphy)
 Website: www.morphyrichards.com
 Address: **The After Sales Division
 Morphy Richards Ltd
 Mexborough,
 South Yorkshire,
 England, S64 8AJ**

