

DF480003 MUK Rev1

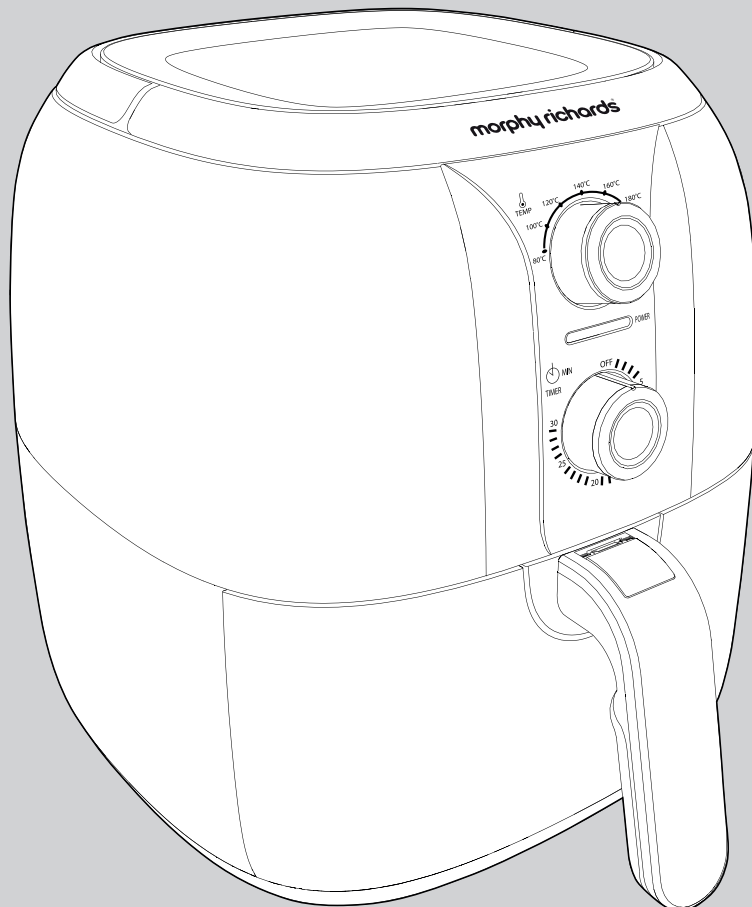
# morphy richards®

smart ideas for your home



## Health Fryer

Please read and keep these instructions for future use



For competitions, product hints and tips  
and more join us at



[www.morphyrichards.co.uk/blog](http://www.morphyrichards.co.uk/blog)



[www.facebook.com/morphyrichardsuk](http://www.facebook.com/morphyrichardsuk)



[@loveyourmorphy](https://twitter.com/loveyourmorphy)

[www.morphyrichards.com](http://www.morphyrichards.com)

\* Register online for your 2 year guarantee. See the back of this instruction book for details (UK and Ireland customers only).

## Health And Safety

The use of any electrical appliance requires the following common sense safety rules. Please read these instructions carefully before using the product.

- This appliance can be used by children aged from 8 years and above and persons with reduced physical, sensory or mental capabilities or lack of experience and knowledge if they have been given supervision or instruction concerning use of the appliance in a safe way and if they understand the hazards involved.
- Keep the appliance and its cord out of the reach of children aged less than 8 years.
- Children shall not play with the appliance.
- Cleaning and user maintenance shall not be made by children unless they are older than 8 and supervised.
- This appliance is intended to be used in household and similar applications such as: farm houses, by clients in hotels, motels and other residential type environments, bed and breakfast type environments. It is not suitable for use in staff kitchen areas in shops, offices and other working environments.
- If the supply cable is damaged, it must be replaced with a special cable assembly available from the manufacturer or its service agent in order to avoid a hazard.
- For care and cleaning refer to page 8.
- This appliance is not intended to be operated by means of an external timer or separate remote control system.

## Health And Safety (Continued)

In addition, we offer the following safety advice.

### Location

- Place the appliance on a horizontal, flat and stable heat resistant surface, away from a heating source and where it cannot be splashed by water.
- Allow adequate air space above and on all sides for air circulation.
- Do not use outdoors or near water.

### Mains cable

- The mains cable should reach from the socket to the base unit without straining the connections.
- Do not let the cable hang over the edge of the table or the counter and keep it away from any hot surface.
- Do not let the cable run across an open space e.g. between a lower socket and table.

### Personal safety

- **WARNING: Never attempt to move your Health Fryer until it is completely cool. This can take up to three hours.**
- Be careful not to touch those surfaces of the Health Fryer which become hot when in use.
- **WARNING: To protect against the risk of electric shock, do not immerse the control unit in water or other liquid.**
- Unplug from the electrical outlet when not in use and before cleaning. Allow to cool before putting on or taking off parts, and before cleaning the appliance.
- **WARNING: Misuse can cause personal injury.**
- Never leave the Health Fryer unattended when connected to the electricity supply.
- Never lean over the Health Fryer when it is in use.

### Other safety considerations

- The use of attachments or tools not recommended or sold by Morphy Richards may cause fire, electric shock or injury.
- Do not operate any appliance with a damaged cord or plug or after the appliance malfunctions or has been damaged in any manner.
- Do not use the Health Fryer for anything other than its intended purpose.

### Electrical requirements

Check that the voltage on the rating plate of your appliance corresponds with your house electricity supply which must be A.C. (Alternating Current).

**WARNING :** The plug removed from the mains lead, if severed, must be destroyed, as a plug with a bared flexible cord is hazardous if engaged into a live socket outlet.

Should the fuse in the 13 amp plug require changing, a 13 amp BS1362 fuse must be fitted.

**WARNING: This appliance must be earthed.**



**CAUTION!**  
HOT SURFACE

**PLEASE BE AWARE  
OF HOT SURFACES  
HANDLE WITH CARE  
Treating scalds**

- Run cold water over the affected area immediately.
- Do not stop to remove clothing.
- Seek medical advice quickly.

## Introduction

Thank you for your recent purchase of this Morphy Richards Health Fryer.

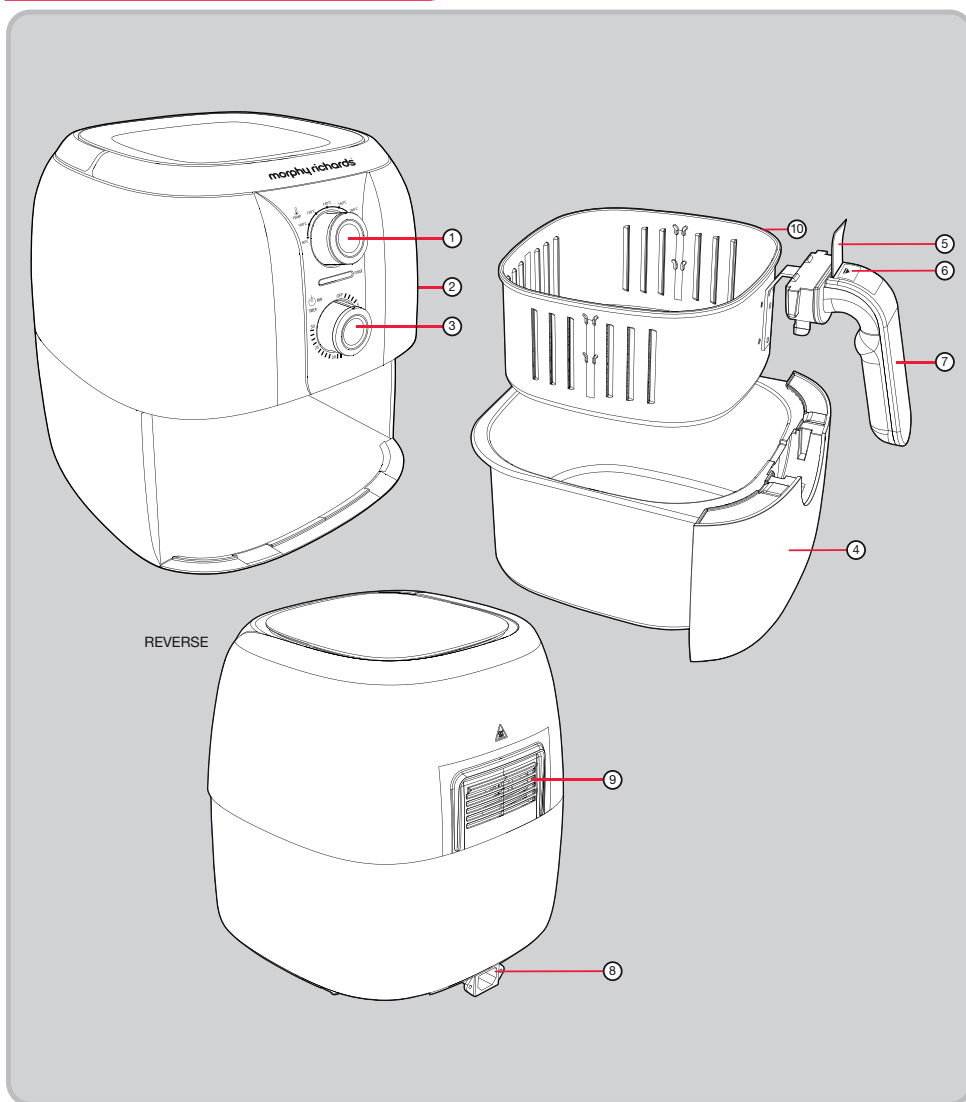
Please read the instructions thoroughly before use.

Remember to visit [www.morphyrichards.co.uk](http://www.morphyrichards.co.uk) to register your product's two year guarantee.

## Contents

Health And Safety .....	2
Introduction .....	4
Product Overview .....	5
Before First Use .....	6
Using your Health Fryer .....	6
Hints And Tips .....	8
Care And Cleaning .....	8
Cooking Guide .....	9
Troubleshooting .....	10
Recipes .....	12
Contact Us .....	20
Notes .....	21
Guarantee .....	24

## Product Overview



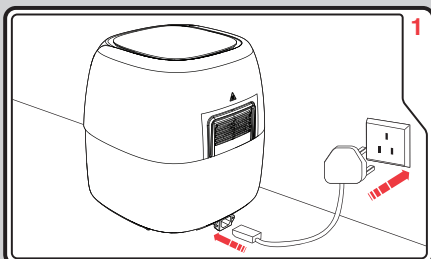
## Features

- |                                 |                             |
|---------------------------------|-----------------------------|
| (1) Temperature Control         | (6) Basket Release Button   |
| (2) Main Body                   | (7) Frying Basket Handle    |
| (3) Timer Control               | (8) Mains Power Cord Socket |
| (4) Drawer                      | (9) Air outlet and filter   |
| (5) Basket Release Button Cover | (10) Frying basket          |

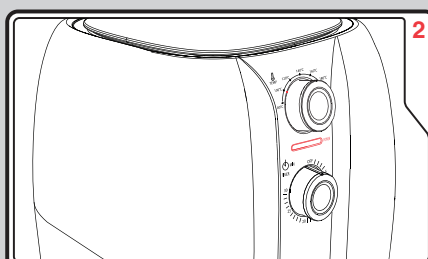
## Before First Use

- 1 Remove all packaging materials.
- 2 Remove all stickers and labels from the appliance (excluding the rating label).
- 3 Clean all parts to remove any dust or manufacturing residues.
- 4 Thoroughly wash all removable parts by hand with hot water, washing-up liquid and a non-abrasive sponge. Do not submerge the Main Body(2) in water. Wipe with a damp cloth.
- PLEASE NOTE: All parts are NOT dishwasher safe.
- 5 Wipe the inside and outside of the appliance with a moist cloth.
- 6 Dry all parts of your Health Fryer thoroughly. When replacing the drawer, ensure it is aligned correctly.
- 7 Use the appliance on a horizontal, flat and stable heat resistant surface, away from a heating source and where it cannot be splashed by water.

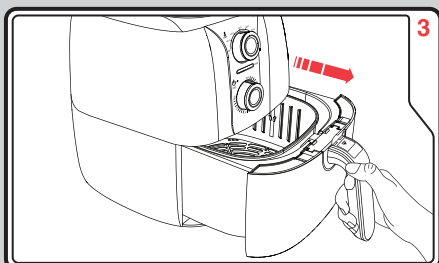
## Using Your Health Fryer



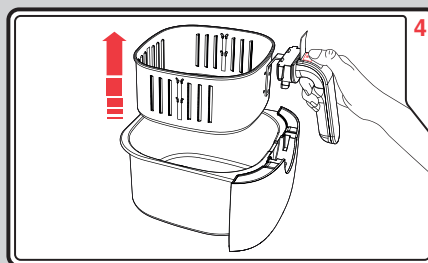
Ensuring the lead is inserted into the back of the Main Body (2), plug the Health Fryer into the mains.



The power light will illuminate. Before cooking, preheat the Health Fryer for 3 minutes at the temperature that you will be cooking at.



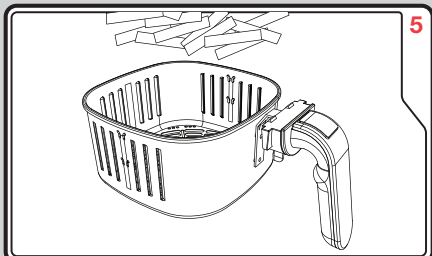
Remove the Drawer (4) from the Main Body (2). Pull the Drawer (4) fully out from your Health Fryer.



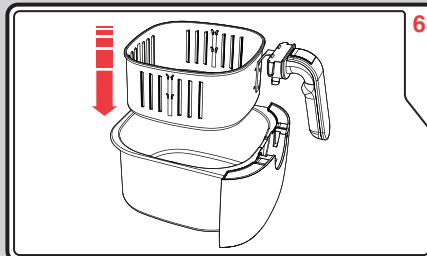
Remove the Frying Basket (10) from the Drawer (4) by lifting the Basket Release Button Cover (5) and pressing the Basket Release Button (6). Use the Frying Basket Handle (7) to pull the basket fully out from the Drawer (4).

PLEASE NOTE: Only raise the Basket Release Button Cover (5) when using the Basket Release Button (6). At all other times, have the Basket Release Button Cover (5) lowered.

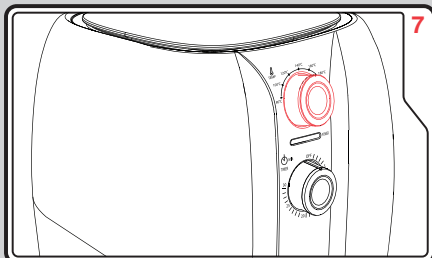
## Using Your Health Fryer (Continued)



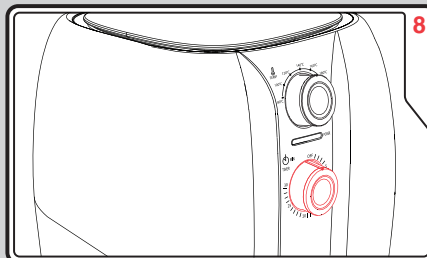
Place the food into the Frying Basket (10) and repeat Step 3. Only place food in the Frying Basket (10). Do not put oil or food into the Drawer (4).



Place the Frying Basket (10) into the Drawer and re-insert the Drawer (4) into the Main Body (2) until it clicks into place. Ensure the Drawer (4) is fully closed. A safety switch will prevent it working if not closed properly.



Turn the Temperature Control (1) to set the temperature you require.



Turn the Timer Control (3) to set the cooking time. Your food is now cooking.

When the time is up on the timer, the Health Fryer will ring and automatically turn off.

If the food is not cooked to your desired requirements, repeat.

Tip: Check your food at two minute intervals to ensure food is not overcooked.

Either remove the entire Basket (10) (see Step 2), or carefully use plastic or wooden utensils to remove your food.

## Hints And Tips

- Take into account the food to be cooked before you select your frying temperature. As a general guide pre-cooked food needs a higher cooking temperature than raw food.
- Cook your food thoroughly. Remember that your food may begin to turn golden brown before it is cooked through.
- Select your cooking utensils with care. Do not use utensils that may melt. Do not use metal utensils as they may damage the pan coatings.
- Your Health Fryer has a maximum capacity for food. This is dependant on food type (see the 'Cooking guide' for more information). As a guide do not fill the basket more than half full.
- Smaller ingredients usually require a shorter frying time than larger ingredients.
- A larger amount of ingredients requires only a slightly longer frying time, a smaller amount of ingredients requires only a slightly shorter frying time.
- Do not leave the Drawer out for too long. The temperature will drop.
- The optimal amount for preparing crispy fries is 500 grams.
- Use pre-made dough to prepare filled snacks quickly and easily. Pre-made dough also requires a shorter frying time than home-made dough.
- You can also use the Health Fryer to reheat ingredients. To do this, set the temperature to 150°C for up to 10 minutes. Check that food is hot before eating.

## Care and Cleaning

- 1 Clean the appliance after each use, but remove the mains plug from the wall and allow the appliance to cool down - removing the Drawer (4) from the Health Fryer allows it to cool down quicker.
- 2 Remove the power cord when cleaning the Health Fryer. The cord can then be stored with the Health Fryer itself.
- 3 Wipe the outside of the appliance with a moist cloth.
- 4 Remove the Drawer (4) and Frying Basket (10) and wash them by hand in hot soapy water, using a non-abrasive sponge.
- If any food residue is stuck to the Drawer (4) and Frying Basket (10), half fill the Drawer with hot soapy water. Place the Frying Basket (10) in the Drawer and let them soak for approximately 10 minutes. **Do not place inside the main unit.**
- The Drawer (4) and Frying Basket (10) have a coating. Do not use metal kitchen utensils or abrasive cleaning materials to clean them, as this may damage the coating.
- 5 Clean the inside of the appliance with a moist cloth.
- 6 Dry all parts of your Health Fryer thoroughly and replace the Drawer (4), Frying Basket (10). When replacing the Drawer, ensure it is aligned correctly.



## Cooking Guide

These frying times and temperatures are intended as a guide only and should be adjusted to suit quantity or thickness of food and your own taste.

Food	Weight or size	Temperature	Time	Remarks
<ul style="list-style-type: none"> <li>Fresh chips Lightly coat the fresh chips in oil. Spray or place in a bowl &amp; evenly coat.</li> </ul>	<ul style="list-style-type: none"> <li>500g</li> </ul>	<ul style="list-style-type: none"> <li>180°C - 200°C</li> </ul>	<ul style="list-style-type: none"> <li>30 mins +3 mins preheat</li> </ul>	Shake & turn over
<ul style="list-style-type: none"> <li>Frozen chips</li> </ul>	<ul style="list-style-type: none"> <li>200g</li> </ul>	<ul style="list-style-type: none"> <li>200°C</li> </ul>	<ul style="list-style-type: none"> <li>12 mins +3 mins preheat</li> </ul>	Shake & turn over
<ul style="list-style-type: none"> <li>Frozen chips</li> </ul>	<ul style="list-style-type: none"> <li>500g</li> </ul>	<ul style="list-style-type: none"> <li>200°C</li> </ul>	<ul style="list-style-type: none"> <li>20 mins +3 mins preheat</li> </ul>	Shake & turn over
<ul style="list-style-type: none"> <li>Fresh chicken drumsticks (x3-4)</li> </ul>	<ul style="list-style-type: none"> <li>100g-500g</li> </ul>	<ul style="list-style-type: none"> <li>180°C</li> </ul>	<ul style="list-style-type: none"> <li>22 mins +3 mins preheat</li> </ul>	Turn over
<ul style="list-style-type: none"> <li>Frozen fish fingers (x6-8)</li> </ul>	<ul style="list-style-type: none"> <li>175g</li> </ul>	<ul style="list-style-type: none"> <li>200°C</li> </ul>	<ul style="list-style-type: none"> <li>14 mins +3 mins preheat</li> </ul>	Turn over
<ul style="list-style-type: none"> <li>Frozen beef burgers (x2)</li> </ul>	<ul style="list-style-type: none"> <li>2x ½lb</li> </ul>	<ul style="list-style-type: none"> <li>180°C</li> </ul>	<ul style="list-style-type: none"> <li>20 mins +3 mins preheat</li> </ul>	Turn over
<ul style="list-style-type: none"> <li>Frozen pain au chocolat (x2)</li> </ul>	<ul style="list-style-type: none"> <li>2pc (defrost)</li> </ul>	<ul style="list-style-type: none"> <li>180°C</li> </ul>	<ul style="list-style-type: none"> <li>5 mins</li> </ul>	

## Troubleshooting

Problem	Reason	Solution
<ul style="list-style-type: none"> <li>The Health Fryer will not switch on.</li> </ul>	<ul style="list-style-type: none"> <li>The Health Fryer is not plugged in correctly.</li> <li>A circuit breaker has been tripped.</li> <li>The Drawer is not fully in place.</li> </ul>	<ul style="list-style-type: none"> <li>Plug the Health Fryer into the mains socket and switch on.</li> <li>Check and reset the circuit breaker.</li> <li>Push the Drawer into place.</li> </ul>
<ul style="list-style-type: none"> <li>The food has not been cooked thoroughly.</li> </ul>	<ul style="list-style-type: none"> <li>Food capacity has been exceeded.</li> <li>The temperature was set too low.</li> <li>The cooking time was not long enough.</li> </ul>	<ul style="list-style-type: none"> <li>Remove some of the food and fry again in separate batches. This will cook food more evenly and thoroughly.</li> <li>Manually increase set temperature.</li> <li>Manually increase set cooking time.</li> </ul>
<ul style="list-style-type: none"> <li>Food has cooked unevenly.</li> </ul>	<ul style="list-style-type: none"> <li>Certain types of food may need to be shaken mid-way through the frying process.</li> </ul>	<ul style="list-style-type: none"> <li>Refer to the cooking guidelines section, and if required, shake or turn food mid-way through the frying process.</li> </ul>
<ul style="list-style-type: none"> <li>The Basket Assembly will not slide back into the housing properly.</li> </ul>	<ul style="list-style-type: none"> <li>Too much food in the Basket.</li> <li>Pan not aligned correctly.</li> </ul>	<ul style="list-style-type: none"> <li>If there is too much food in the basket, please remove some of the food and retry.</li> <li>Correctly align the Drawer with the grooves located on the inside of the Health Fryer housing.</li> </ul>
<ul style="list-style-type: none"> <li>White smoke is being emitted during cooking.</li> </ul>	<ul style="list-style-type: none"> <li>The food contained within may be quite greasy or fatty.</li> <li>The Drawer may still contain oil/fat from previous use.</li> </ul>	<ul style="list-style-type: none"> <li>Greasy or fatty food will emit fat/oil into the Drawer of the Health Fryer, and when heated it may emit a white smoke. Try to avoid cooking greasy/fatty foods in the Health Fryer. The white smoke does not affect the cooking process.</li> <li>Ensure the Drawer is thoroughly cleaned after each use.</li> </ul>

## Troubleshooting (Continued)

Problem	Reason	Solution
• Chips are not cooking evenly in the Health Fryer.	• Chips were not rinsed adequately before cooking.	• Rinse chips thoroughly (to remove starch) and allow them to dry before cooking.
• Chips are not crispy.	• There may be a lack of oil or too much water.  • Chip size may be too large.  • You may be using the wrong type of potato.	• Ensure chips are dried after rinsing with water. Possibly add a little more oil to the chips before cooking.  • Try cutting the potato into smaller pieces for a crispier result.  • When making home-made chips/fries, the best type of potato to use are the floury varieties (King Edward or Maris Piper).

## Recipes



We have developed a range of delicious recipes for you to try with your new Health Fryer.

The cooking times for the following recipes are a guide and will be affected by the size and freshness of the ingredients used.

Always ensure food is thoroughly cooked before serving.

Recipes are designed for a maximum quantity to serve two to four people. If you are reducing the portion sizes, please adjust the cooking times as appropriate.

**PLEASE NOTE:** This product comes with a 30 minute maximum timer, for recipes that require longer cooking times than this, simply restart the timer for the remaining cooking time.

## Starters

### Breaded mushrooms

Preparation time: 10 minutes

Serves: 4

Cooking time: 25 minutes

#### Ingredients:

- 200g baby button mushrooms
- 3 level tbsp plain flour
- 1 medium egg, beaten
- 75g dried breadcrumbs
- 1½ tbsp sunflower oil

#### Method:

- 1 Wash the mushrooms carefully in a colander.
- 2 Place the drained mushrooms into a plastic bag, add the flour and shake to coat.
- 3 Dip the floured mushrooms a few at a time into the beaten egg and then into the breadcrumbs.
- 4 Place all the mushrooms into the frying basket in a single layer. Drizzle the oil over the mushrooms.
- 5 Preheat at 180°C for 3 minutes.
- 6 Cook for 20 – 25 minutes at 180°C, turning the mushrooms over after 12 minutes with a wooden spatula.
- 7 Serve with a dipping sauce made from 2 level tbsp natural yogurt, 2 level tbsp mayonnaise, 5g chopped fresh parsley, half a small crushed clove of garlic and season with salt and pepper to taste.

### Chicken nuggets

Serves: 4 – 6

Cooking time: 20 minutes

Preparation time: 10 minutes

#### Ingredients:

- 500g chicken breast
- 4 level tbsp plain flour, seasoned with salt and pepper
- 2 eggs, beaten
- 150g dried breadcrumbs
- 4 tbsp olive oil

#### Method:

- 1 Cut the chicken into bite sized chunks with scissors.
- 2 Dip the chunks a few at a time first into flour, then the beaten egg and then into the breadcrumbs. Set aside on a plate.
- 3 Place half the nuggets on a plate, drizzle over 2 tbsp olive oil and turn them to coat. Refrigerate the second lot until needed.
- 4 Preheat at 190°C for 3 minutes.
- 5 Cook the first batch at 190°C for 15- 20 minutes, turning over or shaking the basket halfway through cooking.
- 6 Coat the remaining nuggets with the rest of the oil and repeat as above.
- 7 Serve with tomato ketchup and side salad.

## Caprese open sandwich

Serves: 1- 2

Cooking time: 15 minutes

Preparation time: 5 minutes

### Ingredients:

- 2 slices white bloomer loaf, cut 20mm thick
- 2 tbsp olive oil
- 1 clove garlic, cut in half
- 100g firm, sweet tomatoes
- A few basil leaves
- 120g Buffalo mozzarella
- Salt and freshly ground black pepper

### Method:

- 1 Rub the cut side of the garlic over one side of the bread and then brush each slice with ½ tbsp olive oil.
- 2 Slice the tomatoes and place on top of the bread.
- 3 Tear a few basil leaves and place some on top and some underneath the tomatoes. Season well.
- 4 Cut the mozzarella into slices and place on top of the tomatoes.
- 5 Season the top with a little freshly ground pepper and drizzle with the remaining tbsp oil.
- 6 Preheat at 180°C for 3 minutes.
- 7 Place the sandwiches carefully into the frying basket and cook at 180°C for 10-15 minutes until the cheese has melted and starting to brown.
- 8 Serve immediately garnished with a basil leaf.

### Hints and tips:

For a more pronounced garlic flavour, crush the garlic at stage 1.

## Potato Dishes

### Freshly Cut Chips

Serves: 2-4

Cooking time: 30 minutes

Preparation time: 10 minutes plus 20 minutes soaking

### Ingredients:

- 500g ( peeled weight ) Maris Piper potatoes
- 1 tbsp sunflower oil
- salt

### Method:

- 1 Cut the potatoes into chips of approximate size 80mm x 20mm, place in a colander and rinse under cold running water.
- 2 Place the chips into a bowl of cold water to soak for 20-30 minutes.
- 3 Drain the chips through the colander and then pat dry with a tea towel.
- 4 Place the chips into a bowl, drizzle over the oil and sprinkle with a little salt. Mix well.
- 5 Preheat at 200°C for 3 minutes.
- 6 Place the chips into the frying basket and shake to level.
- 7 Cook at 200°C for approximately 30 minutes, shaking the basket every ten minutes.
- 8 Serve immediately.

## Potato wedges

Serves: 2-4

Cooking time: 30 minutes

Preparation time: 10 minutes plus 20 minutes soaking

### Ingredients:

- 500g Maris Piper potatoes
- 1 level tsp ground cumin
- 1 level tsp ground coriander
- 1 level tsp paprika
- A little salt
- 1½ tbsp olive oil

### Method:

- 1 Wash and halve each potato and then cut the halves into wedges.
- 2 Place in a bowl of cold water and soak for 20 minutes.
- 3 In a bowl, mix together the spices and salt.
- 4 Drain the wedges through a colander and then pat dry with a clean tea towel.
- 5 Rinse and dry the bowl used for soaking the wedges and then return the wedges to the bowl.
- 6 Add the oil and stir to coat the wedges.
- 7 Sprinkle over the spices and mix well to coat.
- 8 Preheat at 200°C for 3 minutes.
- 9 Place the wedges into the frying basket and shake to level.
- 10 Cook for 30 minutes at 200°C, shaking the basket every ten minutes.

### Hints and tips:

For a change, try 500g sweet potatoes (no need to peel) with 1 tbsp chopped fresh thyme, salt and pepper and 2 tbsp olive oil.

## Rosemary roast potatoes

Serves: 2-4

Cooking time: 30 minutes

Preparation time: 5 minutes

### Ingredients:

- 500g Maris Piper potatoes
- 1 tbsp extra virgin olive oil
- ½ level tsp salt
- 1 tbsp chopped fresh rosemary (or ½ tbsp dried)

### Method:

- 1 Wash and dry the potatoes.
- 2 Leaving the skin on, cut each potato in half and then cut into bitesize pieces.
- 3 Place the potato in a mixing bowl and add the other ingredients. Stir well.
- 4 Preheat at 200°C for 3 minutes.
- 5 Cook the potatoes for 30 minutes at 200°C, shaking the basket after 15 minutes.
- 6 Serve immediately.

## Main Courses

### Tandoori Chicken wraps

Serves: 2-4

Cooking time: 30 minutes

Preparation time: 10 minutes plus marinating overnight

#### Ingredients:

- 2 skinless and boneless chicken breasts each weighing 175g
- 100g natural yogurt
- 1½ level tbsp tandoori powder
- 1 crushed clove garlic
- 1 ½ tsp lemon juice
- 2 pinches salt
- 2 tsp sunflower oil

#### For mint raita:

- 4 level tbsp natural yogurt
- 1 tsp lemon juice
- 6-8 mint leaves, chopped
- pinch salt

#### To serve:

- 2 - 4 Tortilla wraps
- Mint raita
- Shredded lettuce, tomato, cucumber
- Lemon wedges
- Mango chutney if desired

#### Method:

- 1 Using a sharp knife, make three cuts at an angle on one side of each of the chicken breasts.
- 2 In a bowl, mix together the yogurt, tandoori powder, crushed garlic, lemon juice and salt.
- 3 Rub the mixture all over and into the cuts made on the chicken breasts.
- 4 Place the chicken in a dish in a single layer, cover with foil and refrigerate overnight.
- 5 Spoon 1 tsp oil over the chicken breasts, discarding the excess tandoori yogurt mixture.
- 6 Preheat at 200°C for 3 minutes.
- 7 Place the chicken into the frying basket and cook at 200°C for 25- 30 minutes, turning half way through cooking.
- 8 Meanwhile make the raita: Mix all the ingredients together in a small serving bowl or ramekin.
- 9 Four minutes before the end of cooking, loosely roll the tortilla wraps together and make a parcel from foil. Place on top of the chicken to warm through for 4 minutes.
- 10 Slice the chicken and serve with the tortillas, shredded lettuce, salad and mint raita.



## Herby Chicken thighs

Serves: 2-4

Cooking time: 30 – 40 minutes

Preparation time: 5 minutes plus marinating time

### Ingredients:

- 4 chicken thighs, with skin on
- 2 level tsp dried oregano
- 2 level tsp dried thyme
- 2 bay leaves
- black pepper
- 2 tbsp lemon juice
- 5 tbsp olive oil
- A little salt

### Method:

- 1 Prick the chicken all over with a fork and place in a shallow layer in a dish.
- 2 Sprinkle on the oregano and thyme, add the bay leaves and a generous grinding of black pepper.
- 3 Pour on the lemon juice and olive oil and turn the joints to coat them all over.
- 4 Cover the dish with foil, place in the fridge for at least 4 hours, turning from time to time.
- 5 Preheat at 180°C for 3 minutes.
- 6 Discarding the marinade place the chicken into the frying basket.
- 7 Cook at 180°C for 30 -40 minutes, turning halfway through cooking. Ensure the chicken is fully cooked and that the juices run clear before serving.
- 8 Season the chicken with a little salt and serve on a bed of watercress with new potatoes or French fries.

## Corned Beef Baked Potatoes

Serves: 2

Cooking time: 1 hour 15 minutes

Preparation time: 10 minutes

### Ingredients:

- 2 even sized baking potatoes (each approximately 250g)
- 200g corned beef
- 75g onion, chopped finely
- 1 tbsp olive oil
- Freshly ground black pepper.
- A little butter

### Method:

- 1 Preheat at 200°C for 3 minutes.
- 2 Place the finely chopped onion onto a piece of foil and drizzle over the olive oil. Place the foil into the frying basket and cook the onion at 200°C for 10 -15 minutes or until beginning to soften.
- 3 Wash and dry the potatoes and then prick all over with a fork.
- 4 When the onions are ready, remove from the Health Fryer and set aside until later.
- 5 Bake the potatoes at 200°C for about 60 minutes.
- 6 When the potatoes are ready, cut a slit lengthways down the skin and scoop the contents into a bowl.
- 7 Mash the potato and corned beef together until well mixed, add the chopped onion and some black pepper.
- 8 Spoon the mixture back into the potato cases, dot with a little butter and bake at 200°C for 10-15 minutes or until beginning to brown.
- 9 Serve immediately with a side salad and pickles.

## Lamb Kofta meatballs

Serves: 2-3

Cooking time: 15-20 minutes

Preparation time: 10 minutes

### Ingredients:

- 375g lamb mince
- 75g onion, finely chopped
- 12 mint leaves finely chopped
- 2 garlic cloves crushed
- 2 level tsp harissa paste
- 1 level tsp cinnamon
- Two good pinches of salt
- Freshly ground black pepper
- A little olive oil

### To serve:

- 6 tbsp natural yogurt
- 1 tsp lemon juice
- 3 sprigs mint, leaves chopped finely
- Pinch salt

### Method:

- 1 Place the meatball ingredients into a bowl and mix together until well combined.
- 2 Form into 12 small balls.
- 3 Lightly brush the surface of each ball with oil.
- 4 Preheat at 180°C for 3 minutes.
- 5 Cook at 180°C for 15- 20 minutes, until browned and cooked through turning after 10 minutes.
- 6 Serve with a mixed salad, a lemon yogurt dressing and rice.

### Hints and tips:

Adjust or use different spices to suit your own taste, or add herbs only for a change.

## Desserts/Puddings

### Blueberry Muffins

Serves: 4

Cooking time: 20 minutes

Preparation time: 10 minutes

#### Ingredients:

- 120g plain flour
- 1¼ level tsp baking powder
- 50g caster sugar
- 35g unsalted butter
- 1 egg, beaten
- 25ml vegetable oil
- 2 tbsp milk
- 75g fresh blueberries
- 8 muffin cases

#### Method:

- 1 Sieve the flour, baking powder and sugar into a mixing bowl.
- 2 Melt the butter in a pan over a low heat and then mix with the beaten egg and the oil.
- 3 Add the butter, egg and oil to the dry ingredients and fold lightly in with the milk with a tablespoon until partly combined and then add the blueberries.
- 4 Preheat at 170°C for 3 minutes.
- 5 Using two paper cases for each, divide the mixture equally to make four muffins and when ready, carefully place into the frying basket.
- 6 Cook at 170°C for 20 minutes.
- 7 Cool on a wire rack.

### Baked Bananas

Serves: 2

Cooking time: 10 minutes

Preparation time: 5 minutes

#### Ingredients:

- 2 ripe but firm bananas (of size to fit in the frying basket in a single layer)
- 4 tsp clear honey
- A little ground cinnamon

#### To serve:

- Vanilla ice cream or fresh cream

#### Method:

- 1 Remove the skin from the bananas and place each on a piece of cooking foil, large enough to make a parcel.
- 2 Sprinkle a little cinnamon and drizzle over 2 tsp of honey onto each banana.
- 3 Make a foil parcel ensuring the ends and top are secure to avoid leakage during cooking.
- 4 Preheat at 140°C for 3 minutes.
- 5 Place the foil parcels into the frying basket in a single layer with the crimped edge uppermost and bake at 140°C for 10 minutes.
- 6 Remove the foil parcels, opening carefully as the liquid inside will be hot.
- 7 Place the banana onto a serving plate and serve with vanilla ice cream or fresh cream.

#### Hints and tips:

Green bananas are unsuitable as they have a poor flavour.

## Contact Us

### Helpline

If you are having a problem with your appliance, please call our Helpline, as we are more likely to be able to help than the store you purchased the item from.

Please have the product name, model number and serial number to hand when you call to help us deal with your enquiry quicker.

UK Helpline: **0344 871 0944**

IRE Helpline: **1800 409 119**

Spares: **0344 873 0710**

### Talk To Us

If you have any questions or comments, or want some great tips or recipe ideas to help you get the most out of your products, join us online:

Blog: [www.morphyrichards.co.uk/blog](http://www.morphyrichards.co.uk/blog)

Facebook: [www.facebook.com/morphyrichardsuk](https://www.facebook.com/morphyrichardsuk)

Twitter: [@loveyourmorphy](https://twitter.com/loveyourmorphy)

Website: [www.morphyrichards.com](http://www.morphyrichards.com)







DF480003 MUK Rev1 09/17

## Registering your 2 year guarantee

Your standard one year guarantee is extended for an additional 12 months when you register the product within 28 days of purchase with Morphy Richards. If you do not register the product with Morphy Richards within 28 days, your product is guaranteed for 1 year. To validate your 2 year guarantee register with us online at

[www.morphyrichards.co.uk](http://www.morphyrichards.co.uk)

Or call our customer registration line quoting model and serial number, these numbers can be found on the base of the product.

**UK 0344 871 0242**  
**IRE 1800 409 119**

N.B. Each qualifying product needs to be registered with Morphy Richards individually.

Please note that the 2 year guarantee is only available in the UK and Ireland. Please refer to the one year guarantee for more information.

## Your 1 year guarantee

It is important to retain the retailer's receipt as proof of purchase. Staple your receipt to this back cover for future reference.

Please quote the following information if the product develops a fault. These numbers can be found on the base of the product.

Model no.

Serial no.

All Morphy Richards products are individually tested before leaving the factory. In the unlikely event of any appliance proving to be faulty within 28 days of purchase, it should be returned to the place of purchase for it to be replaced.

If the fault develops after 28 days and within 12 months of original purchase, you should contact the Helpline number quoting Model number and Serial number on the product, or write to Morphy Richards at the address shown.

You may be asked to return a copy of proof of purchase.

Subject to the exclusions set out below (see Exclusions), the faulty appliance will then be repaired or replaced as appropriate and dispatched usually within 7 working days of receipt.

If, for any reason, this item is replaced or repaired during the 1 year guarantee period, the guarantee on the new item will be calculated from original purchase date. Therefore it is vital to retain your original till receipt or invoice to indicate the date of initial purchase.

To qualify for the 1 year guarantee, the appliance must have been used according to the instructions supplied. For example, crumb trays should have been emptied regularly.

## Exclusions

Morphy Richards shall not be liable to replace or repair the goods under the terms of the guarantee where:

- 1 The fault has been caused or is attributable to accidental use, misuse, negligent use or used contrary to the manufacturer's recommendations or where the fault has been caused by power surges or damage caused in transit.
  - 2 The appliance has been used on a voltage supply other than that stamped on the products.
  - 3 Repairs have been attempted by persons other than our service staff (or authorised dealer).
  - 4 The appliance has been used for hire purposes or non domestic use.
  - 5 The appliance is second hand.
  - 6 Morphy Richards reserves the right not to carry out any type of servicing under the guarantee at its discretion.
  - 7 Batteries and damage from leakage are not covered by the guarantee.
- This guarantee does not confer any rights other than those expressly set out above and does not cover any claims for consequential loss or damage. This guarantee is offered as an additional benefit and does not affect your statutory rights as a consumer. Morphy Richards products are intended for household use only. See usage limitations within the location safety instructions.

## Disclaimer

Morphy Richards has a policy of continuous improvement in product quality and design. The company, therefore reserves the right to change the specification of its models at any time.



For electrical products sold within the European Community. At the end of the electrical products useful life, it should not be disposed of with household waste.

Please recycle where facilities exist. Check with your Local Authority or retailer for recycling advice in your country

**IF YOU ARE HAVING A PROBLEM  
WITH ONE OF OUR PRODUCTS, CALL  
OUR HELPLINE:**

**UK: 0344 871 0944**  
**EIRE: 1800 409 119**  
**SPARES: 0344 873 0710**

**morphy richards**

The After Sales Division  
Morphy Richards Ltd  
Mexborough, South Yorkshire,  
England, S64 8AJ

Helplines (office hours)  
UK 0344 871 0944  
Spare Parts 0344 873 0710  
Republic of Ireland 1800 409 119  
[www.morphyrichards.com](http://www.morphyrichards.com)

