

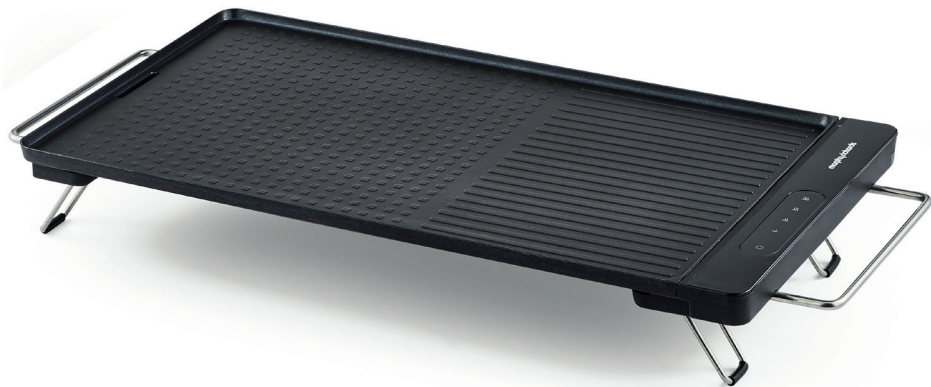


# morphy richards

**3 Year  
Guarantee\***

\*Upon registering your product at [morphyrichards.co.uk](http://morphyrichards.co.uk)

## RAPIDGRILL Tabletop Electric Grill



Model No.  
**485000**

# User Manual

Please read and keep these instructions for future use





## HEALTH AND SAFETY

The use of any electrical appliance requires the following common sense safety rules.

**Please read these instructions carefully before using the product.**

- This appliance can be used by children aged from 8 years and above and persons with reduced physical, sensory or mental capabilities, or lack of experience and knowledge, if they have been given supervision or instruction concerning the use of the appliance in a safe way and understand the hazards involved.
- Children shall not play with the appliance.
- Cleaning and user maintenance shall not be made by children unless they are older than 8 and supervised.
- Keep the appliance and its cord out of reach of children less than 8 years.
- If the supply cordset is damaged, contact Morphy Richards for advice.





## HEALTH AND SAFETY

- This appliance is intended for household use only. It is not suitable for use in staff kitchen areas, in shops, offices and other commercial environments.
- The appliance is not intended to be operated on an extension cable or by means of an external timer or separate remote control.





## HEALTH AND SAFETY

### LOCATION

- Always locate your appliance away from the edge of the worktop.
- Ensure the appliance is used on a firm, flat, heat resistant surface.
- **IMPORTANT: Do not use close to curtains, draperies, walls, cupboards and other flammable materials.**
- **WARNING: Do not use underneath cupboards.**

### MAINS CABLE

- The mains cable should reach from the socket to the appliance without straining the connections.
- Do not let the mains cable hang over the edge of the worktop or open space where a child could reach it.
- Do not let the cable run across a cooker or hot area which might damage the cable.
- Never leave the appliance connected to the socket outlet when not in use.

### PERSONAL SAFETY

- **WARNING: Do not touch the top of the appliance or other hot parts during or after use, use handles or knobs.**
- Do not move the appliance while it is being used and has food on the cooking plate.

### OTHER SAFETY CONSIDERATIONS

- Do not switch on the appliance when it is upside down or laid on its side.
- Do not operate with a damaged cable or after the appliance malfunctions or has been damaged in any manner. Contact Morphy Richards for advice.
- The use of attachments or tools not recommended by Morphy Richards may cause fire, electric shock or injury.
- Do not place on or near a hot gas or electric burner.

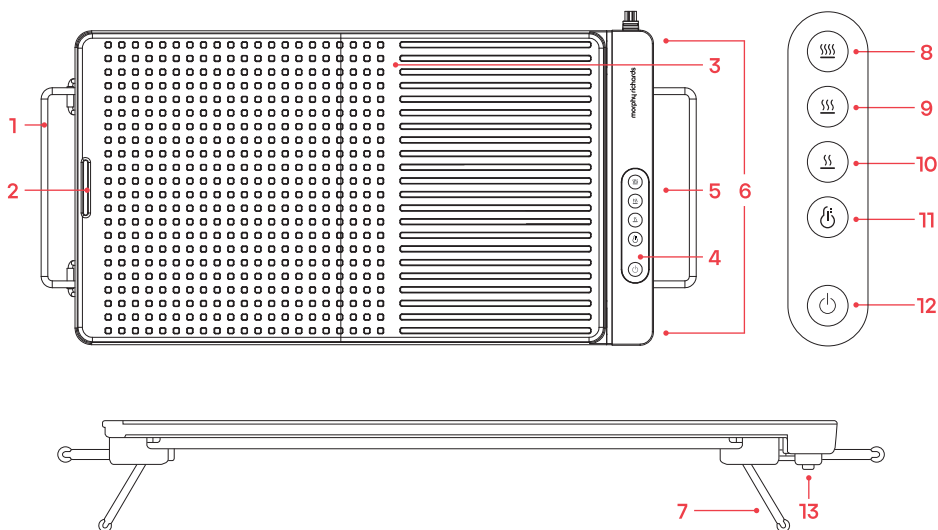


## ELECTRICAL DETAILS

- Check that the voltage on the rating plate of your appliance corresponds with your house electricity supply which must be A.C. (Alternating Current). Should the fuse in the mains plug require changing, replace it with a fuse of the same rating.
- **WARNING: This appliance must be earthed.**



## PRODUCT OVERVIEW



- |  |  |
|--|--|
| <ol style="list-style-type: none"> <li>1. Retractable handles</li> <li>2. Oil drain hole (drip tray not included)</li> <li>3. Non-stick cooking plate</li> <li>4. Detachable control panel with power cable</li> <li>5. Control panel socket</li> <li>6. Control panel locators</li> <li>7. Retractable leg</li> </ol> | <ol style="list-style-type: none"> <li>8. High temperature button with indicator</li> <li>9. Medium temperature button with indicator</li> <li>10. Low temperature button with indicator</li> <li>11. Keep warm button</li> <li>12. Power On/Off button</li> <li>13. Re-set button (underneath control panel)</li> </ol> |
|--|--|





## BEFORE FIRST USE

Remove any labels and tags from the product (excluding the rating label).

Clean the non-stick cooking plate with a damp sponge or dishcloth and a little mild detergent. **DO NOT** use a scouring pad or other abrasive material as this will scratch the non-stick coating.

**Note:** During initial use, you may notice a slight odour due to the burning off of manufacturing residue. This is normal, it does not affect the food being cooked and will disappear after a few uses.

## USING YOUR TABLE GRILL

- Prepare the food to be cooked.
- Open the retractable legs and place the Table Grill on a flat, level, heat resistant surface in the final place it is to be operated. Do not move the appliance while it is being used and has food on the cooking plate.

**Note:** When using the appliance on surfaces that may be damaged due to the heat, it is recommended to use an insulated pad for protection.

- Place a heat resistant drip tray (not included) underneath the Oil Drain Hole to catch excess oil/moisture released from the foods being cooked .
- Open out the retractable handles and attach the control panel securely to the Table Grill, then plug into the mains outlet.

**Note:** The control panel will not attach securely to the grill unless the handles are opened out fully.

**Important:** Always attach the control panel, before inserting the plug into the mains outlet.





## USING YOUR TABLE GRILL

- When you're ready to cook, press the Power On/Off button to turn the grill on, the button will illuminate, then press the desired temperature button, this button will also illuminate.
- Use wood or heat-proof plastic utensils to avoid damaging the non-stick cooking surface.

**Important:** Do not use metal utensils, knives or forks, they can cause damage to the non-stick coating. Never cut food with a knife on the grill surface.

- When cooking is complete, press the Power On/Off button to turn off the grill, and then unplug from the mains outlet.

**Note:** The grill switches off automatically after 2 hours.

**Note:** If the control panel cuts out, unplug the appliance and allow to cool thoroughly. Press the reset button on the underneath of the control panel and then use the grill as per instructions.

**Important:** Do not remove the Control Panel until the appliance has cooled completely.

**WARNING: YOUR GRILL WILL GET HOT. NEVER TOUCH THE GRILL PLATE OR OUTER SURFACES DURING IT'S OPERATION OR BEFORE IT HAS COOLED DOWN.**

## HINTS AND TIPS

- Meat can be used chilled from the fridge, but do not use frozen meat.
- Make sure all frozen ingredients are thoroughly defrosted before use.
- Ingredients should be evenly distributed across the grill.





## TEMPERATURE GUIDE

High temperature		215 - 225°C
Medium Temperature		175 - 185°C
Low Temperature		125 - 135°C
Keep Warm		80°C

## TROUBLESHOOTING

Problem	Possible Cause	Solution
Table Grill doesn't switch on.	Not plugged in.	Check the plug is in the mains socket and the switch is in the 'on' position.
	Control panel is not fitted properly.	Re-fit the control panel.
	Plug itself or the socket is faulty.	Check this by plugging the table grill into another socket.
Food Sticks to the cooking surface.	Food is burnt to the cooking plate.	Ensure the cooking surface is clean and free from burnt food deposits before each use.
	Cooking temperature is too high.	Reduce to a temperature suitable for the food.
Food is not browning/ cooking.	Cooking temperature is too low.	Adjust the temperature dial to the correct cooking temperature.





## CARE AND CLEANING

- Disconnect the plug from the mains outlet.
- Allow the grill to cool completely and then remove the control panel from the appliance.
- Using hot soapy water with a sponge or dishcloth, clean the surface of the cooking plate.
- The grill is dishwasher safe but the control panel **MUST** be removed before placing the grill into the dishwasher and it **MUST** be allowed to dry thoroughly before reattaching the control panel.

## CONTACT US

If you are having a problem with your appliance, please contact our Helpline, as we are more likely to be able to help than the store you purchased the item from. Please have the product name, model number and serial number to hand when you contact us to help us deal with your enquiry quicker.

email: [hello@morphyrichards.co.uk](mailto:hello@morphyrichards.co.uk)

[www.morphyrichards.co.uk](http://www.morphyrichards.co.uk)

## PRODUCT RECYCLING



For electrical products sold within the European Community, at the end of the electrical products useful life, it should not be disposed of with household waste.

Please recycle where facilities exist.

Check with your Local Authority or retailer for recycling advice in your country.





## REGISTERING YOUR 3 YEAR GUARANTEE

Your standard 2 year guarantee is extended for an additional 1 year when you register the product within 28 days of purchase with Morphy Richards. If you do not register the product with Morphy Richards within 28 days, your product is guaranteed for 2 years.



To validate your 3 year guarantee, scan the QR code or register online at [www.morphyrichards.co.uk](http://www.morphyrichards.co.uk)

N.B. Each qualifying product needs to be registered with Morphy Richards individually. Please note that the 2 year guarantee is only available in the UK. Please refer to the 2 year guarantee for more information.

### YOUR 2 YEAR GUARANTEE

It is important to retain the retailer's receipt as proof of purchase. Staple your receipt to the back cover for future reference.

Please quote the following information if the product develops a fault. These numbers can be found on the base of the product.

**Model no.**

**Serial no.**

All Morphy Richards products are individually tested before leaving the factory. In the unlikely event of any appliance proving to be faulty within 28 days of purchase, it should be returned to the place of purchase for it to be replaced. If the fault develops after 28 days and within 24 months of original purchase, you should contact the Helpline quoting Model number and Serial number on the product, or write to Morphy Richards at the address shown. You may be asked to return a copy of proof of purchase.

Subject to the exclusions set out on the next page (see Exclusions), the faulty appliance will then be repaired or replaced as appropriate and dispatched usually within 7 working days of receipt.

If, for any reason, this item is replaced or repaired during the 2 year



## REGISTERING YOUR 3 YEAR GUARANTEE

guarantee period, the guarantee on the new item will be calculated from the original purchase date. Therefore it is vital to retain your original till receipt or invoice to indicate the date of initial purchase.

To qualify for the 2 year guarantee, the appliance must have been used according to the instructions supplied.

The appliance is intended for domestic use only. Misuse or use for commercial or any other purpose will render the guarantee invalid.

### Exclusions

Morphy Richards shall not be liable to replace or repair the goods under the terms of the guarantee where:

1. The fault has been caused or is attributable to accidental use, misuse, negligent use or used contrary to the manufacturer's recommendations or where the fault has been caused by power surges or damage caused in transit.
2. The appliance has been used on a voltage supply other than that stamped on the products.
3. Repairs have been attempted by persons other than our service staff (or authorised dealer).
4. The appliance has been used for hire purposes or non domestic use.
5. The appliance is second hand or refurbished.
6. Morphy Richards reserves the right not to carry out any type of servicing under the guarantee at its discretion.

This guarantee does not confer any rights other than those expressly set out above and does not cover any claims for consequential loss or damage. This guarantee is offered as an additional benefit and does not affect your statutory rights as a consumer. Morphy Richards products are intended for household use only. See usage limitations within the location safety instructions.

### Disclaimer

Morphy Richards has a policy of continuous improvement in product quality and design. The company, therefore reserves the right to change the specification of its models at any time.





GR485000MUK Rev1

# morphy richards



@morphyrichardsuk #loveyourmorphy

[morphyrichards.co.uk](http://morphyrichards.co.uk)

**Morphy Richards**

9 Cabot Lane, Poole, Dorset, BH17 7BY, UK

