



morphy richards

3 Year Guarantee*

*Upon registering your product
at morphyrichards.co.uk

FLEXI FREEZE

40" 2-in-1 Tower Fan & 4L Air Cooler

with Remote Control



Model No.
823501

User Manual

Please read and keep these instructions for future use



HEALTH AND SAFETY

The use of any electrical appliance requires the following common sense safety rules.

Please read these instructions carefully before using the product.

- **WARNING:** Disconnect from the mains supply before carrying out any routine maintenance.
- **WARNING:** Misuse of the appliance could cause personal injury.
- This appliance can be used by children aged from 8 years and above and persons with reduced physical, sensory or mental capabilities, or lack of experience and knowledge, if they have been given supervision or instruction concerning the use of the appliance in a safe way and understand the hazards involved.
- Children shall not play with the appliance.
- Cleaning and user maintenance shall not be made by children unless they are older than 8 years and supervised.
- Keep the appliance and its cord out of reach of children less than 8 years.



HEALTH AND SAFETY

- This appliance is not intended to be operated on an extension cable or by means of an external timer or separate remote control system.
- This appliance is intended for indoor household use only. It is not suitable for use in staff kitchen areas in shops, offices and other commercial environments.
- If the supply cord is damaged, it must be replaced by the manufacturer, its service agent or similarly qualified persons in order to avoid a hazard.
- Unplug the appliance during filling and cleaning.
- Be aware that high humidity levels may encourage the growth of biological organisms in the environment.
- Do not permit the area around the humidifier to become damp or wet. If dampness occurs, turn the output of the humidifier down. If the humidifier output volume cannot be turned down, use the humidifier intermittently. Do not allow



HEALTH AND SAFETY

absorbent materials, such as carpeting, curtains, drapes, or tablecloths, to become damp.

- Never leave water in the reservoir when the appliance is not in use.
- Empty and clean the humidifier before storage. Clean the humidifier before next use.

HEALTH AND SAFETY

MAINS CABLE

- Do not place the mains cable across an open space where it can cause a trip hazard or in a position where it can be pulled by children or animals.
- The mains cable should reach from the socket to the product without straining the connections.

OTHER SAFETY CONSIDERATIONS

- Only use for its intended purpose.
- Do not attempt to repair or adjust any electrical or mechanical element of the appliance. Doing so may be unsafe and will void your warranty.

PERSONAL SAFETY

- Do not allow water or other liquids to run into the appliance as it could create a fire/ electrical.
- Do not touch the cable or plug with wet hands.
- Do not pull the cable when unplugging.
- Keep hands, hair and clothing away from the appliance while in operation, to prevent personal injury and/or damage to the appliance.
- Do not push any objects in to the air inlet or outlet grilles as this may cause electric shock, fire or damage the appliance.



HEALTH AND SAFETY

- In the unlikely event technical problems develop, stop using the product immediately and seek advice from the manufacturer.
- **WARNING:** Do not wrap the power cable around the main body of the appliance during or after use.

LOCATION

- Ensure that the appliance is used on a firm flat surface.
- Do not in any way obstruct the air inlets and outlets of the appliance.
- Do not cover or place any objects on the Air Cooler.
- Do not use this appliance near water or in the immediate surroundings of a bath, shower or swimming pool.
- Do not use outdoors, this appliance is intended for indoor household use only.

ELECTRICAL DETAILS

Check that the voltage on the rating plate of your appliance corresponds with your house electricity supply which must be A.C. (Alternating Current).

Should the fuse in the mains plug require changing, replace it with a fuse of the same rating as originally fitted.

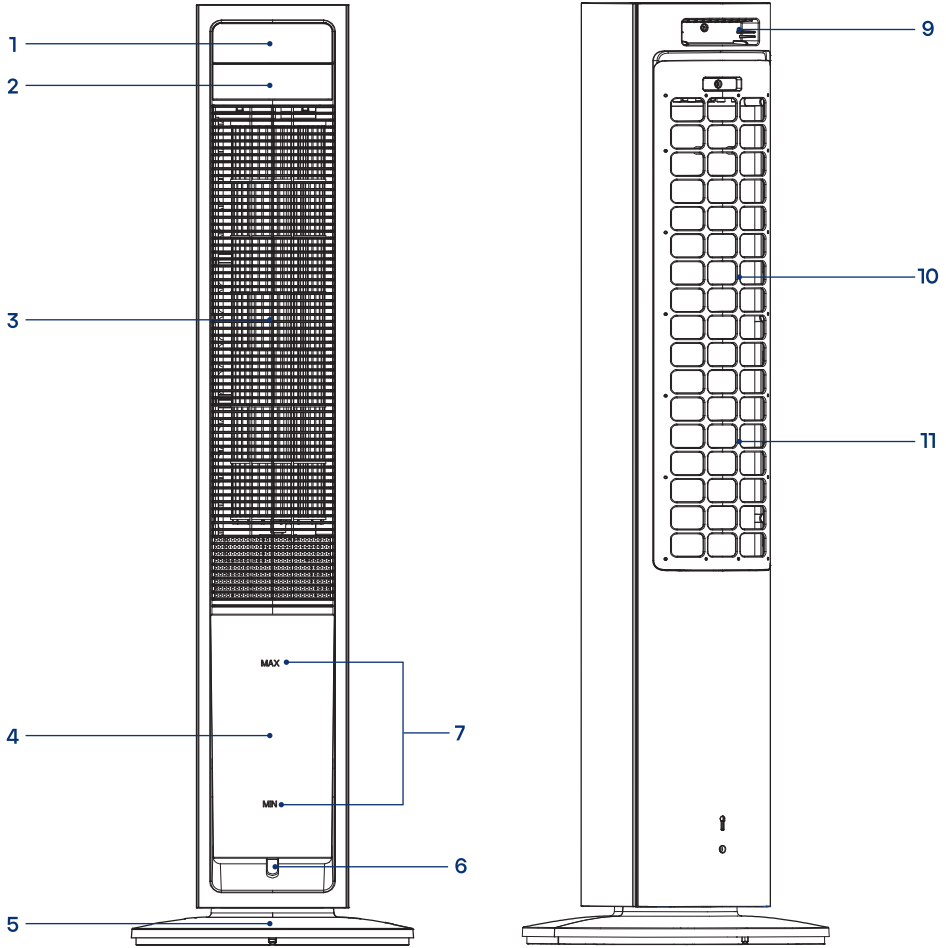
The power consumption in standby mode is 0.5w.

The period after which the equipment reaches automatic off mode is 20s.

WARNING: The plug removed from the mains lead, if severed, must be destroyed, as a plug with a bared flexible cord is hazardous if engaged into a live socket outlet.



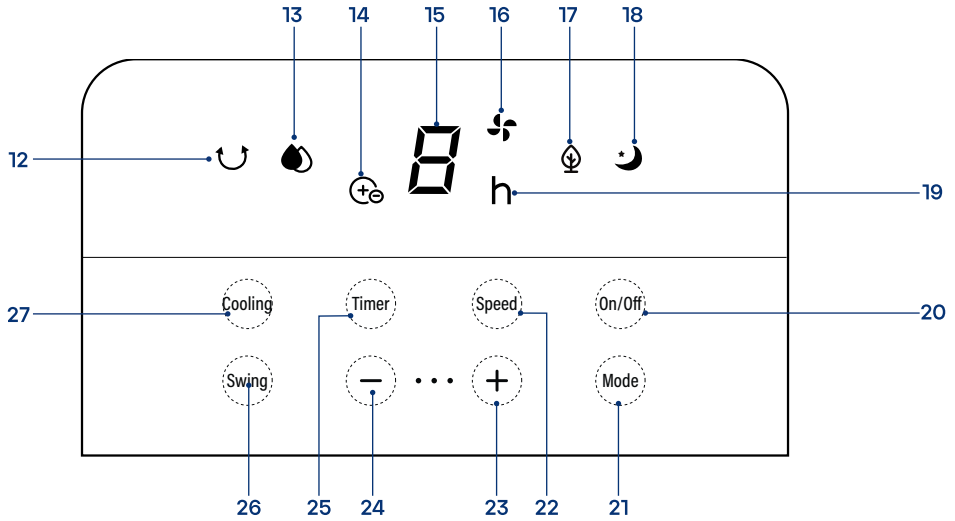
PRODUCT OVERVIEW



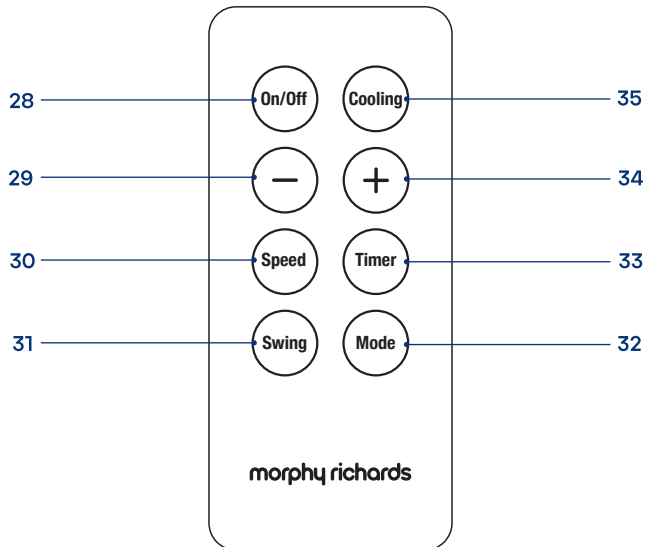


PRODUCT OVERVIEW

CONTROL PANEL



REMOTE CONTROL





PRODUCT OVERVIEW

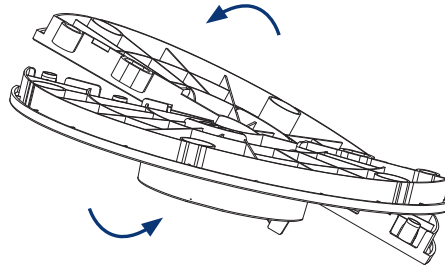
1. Control Panel
2. Display Panel
3. Air Outlet
4. Water Tank
5. Base
6. Water Tank Release Knob
7. Water Level Indicators
8. Ice Packs
9. Remote Control Storage
10. Air Inlet Panel with Mesh Filter
11. Filter (not shown)
12. Swing Indicator
13. Cooling Indicator
14. Plasma Function Indicator Light
15. Fan Speed / Timer Hours Indicator
16. Fan Indicator
17. Nature Indicator
18. Sleep Indicator
19. Timer Hours Indicator
20. Power On/Off Button
21. Mode Button
22. Fan Button
23. Fan Speed/ Timer Increase Button
24. Fan Speed/ Timer Decrease Button
25. Timer Button
26. Swing Button
27. Cooling Button
28. Remote Control Power On/Off Button
29. Remote Control Fan Speed/ Timer Decrease Button
30. Remote Control Fan Speed Button
31. Remote Control Swing Button
32. Remote Control Mode Button
33. Remote Control Timer Button
34. Remote Control Fan Speed/ Timer Increase Button
35. Remote control Cooling Button

BEFORE FIRST USE

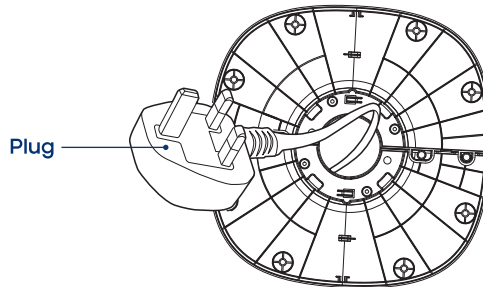
- Remove all packaging and attach the base.
- Ensure the water tank is attached securely to the air cooler with locking tabs.



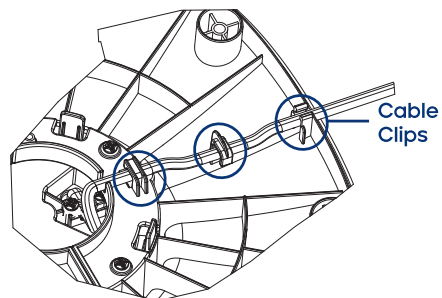
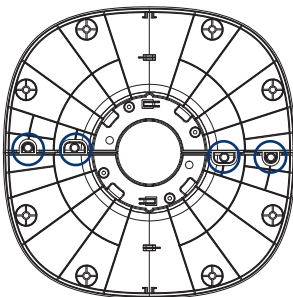
ATTACHING THE BASE



1. Join the 2 base pieces together.



2. Turn the appliance upside down and pass the plug and cable through the centre of the base.

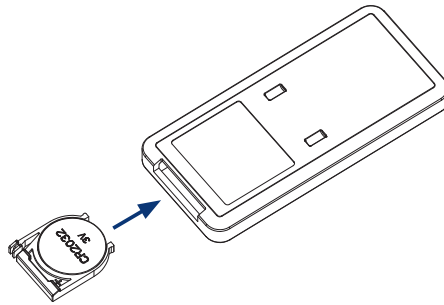


3. Line up the clips on the product with the 4 corresponding holes in the base, push downwards to attach the base to the air cooler. Secure the cable to the base using the cable clips.



USING THE REMOTE CONTROL

- A 3V CR2032 battery is required.
- Open the battery cover at the end of the remote control.
- Check the polarity of the battery and install it into the battery cover.
- Refit the battery cover on to the remote control.



- **WARNING:** Danger of explosion if batteries are incorrectly installed. Replace the battery only with the same type of battery.
- **WARNING:** Keep the remote control and battery out of reach of children.

BATTERY WARNING

KEEP OUT OF REACH OF CHILDREN
Swallowing can lead to chemical burns, perforation of soft tissue, and death. Severe burns can occur within 2 hours of ingestion. Seek medical attention immediately.





LOCATING YOUR AIR COOLER

- Ensure the appliance is used on a firm, flat, level surface.
- The air inlet (10) should have a clearance from walls/obstructions of 30-50 cm.
- The air outlet (3) should have a clearance from walls/obstructions of 100-150 cm.
- The top should be free from any coverings.
- **CAUTION:** Do not in any way obstruct the air inlet and outlet of the appliance.

USING YOUR AIR COOLER

FAN MODE

Fan Mode has 8 fan speeds, 1 to 8. The fan speed selected will illuminate in the display panel.

- Plug into the mains socket. The appliance will 'beep' and enter standby. All function indicator lights (12-19) are off.
- Press the Power On/Off button on the control panel (20) or remote control (28) once to turn on the appliance.
- The appliance default start up is Fan Speed 4. The fan indicator (16) will illuminate.
- To increase or decrease the fan speed, press the fan button on the control panel (22) or remote control (30), then press the fan Speed/timer Increase button (23, 34) or decrease button (24, 29).



USING YOUR AIR COOLER

MODE

- When the appliance is turned on, it will operate in fan mode.

Press the mode button (21, 32) to select the required function.

It cycles Fan mode → Nature mode → Sleep mode → Fan mode...etc.

The corresponding indicator light will illuminate.

NATURE MODE

Nature Mode (17) imitates the wind effect of nature, making the fan speed more comfortable.

- Depending on the fan speed set it automatically increases and decreases:
 - High speed 7 - 8 will increase and decrease.
 - Medium speed 4 - 6 will increase and decrease.
 - Low speed 1 - 3 will increase and decrease.

SLEEP MODE

Note: When Sleep Mode is selected, the fan will operate at default speed 3. The speed can be adjusted between levels 3 to 8.

- After selection, the digital display will flash for 5 seconds and then turn off. Press any button to wake up the screen. Press the button again to execute the corresponding command (pressing the button once will only light up the display without executing any function).

COOLING

- Fill the Water Tank (4) (see Filling with Water section of the manual).
- Press the Cooling button while the appliance is in standby or operating to turn on the humidifying function.
- Once the Cooling function is activated, the fan will operate at speed level 2 for 90 seconds. During this period, the fan speed and mode cannot be adjusted. Normal operation resumes after 90 seconds.

Note: Do not touch or adjust the wet curtain assembly while the COOLING function is on, as water droplets may spray from the air outlet.



USING YOUR AIR COOLER

FILLING WITH WATER

Important: The appliance MUST be switched off when filling the water tank (4) with water.

Note: When using the cooling function, water must be added to the water tank.

- To fill the water tank with a jug or watering can:
 - Rotate the water tank, release knob 90° anti-clockwise and slowly pull out the water tank (Figure 1).
 - Fill the tank to the MAX level. (Figure 2).
 - After adding water, close the water tank and secure into place with the release knob.

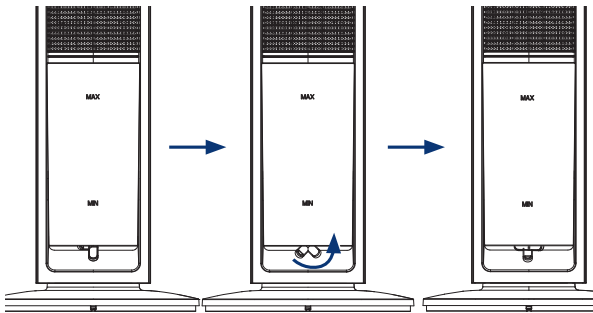


Figure 1

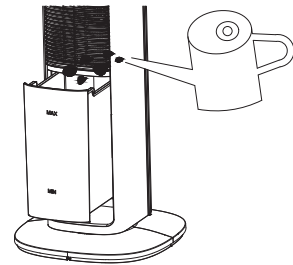


Figure 2

- To fill the water tank under a running tap, the water pump must firstly be detached from the bottom of the water tank.
- Rotate the water tank release knob 90° anticlockwise and slowly pull out the water tank.



USING YOUR AIR COOLER

- Rotate the water pump release knob 90° clockwise and lift the pump out of the mounting (Figures 3 & 4).

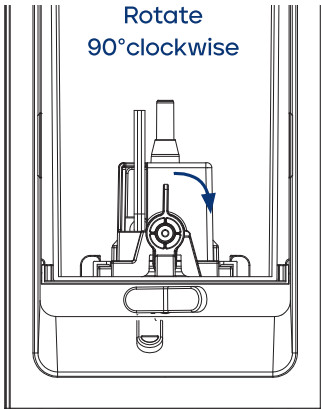


Figure 3

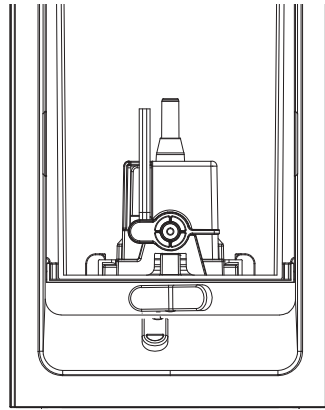


Figure 4

- Fill the tank to the MAX level.
- Refit the pump securely into the mounting (Figure 5), close the water tank and secure into place with the release knob.

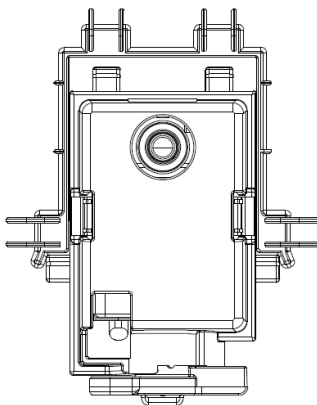


Figure 5

Water pump
orientation





USING YOUR AIR COOLER

Note: When adding water, DO NOT exceed the MAX level display on the front of the water tank.

Note: Always use, clean, fresh tap water.

Note: When the machine is used for the first time, there may be a slight odour and the water in the water tank slight discoloration. This is normal and no cause for concern.

WATER SHORTAGE PROTECTION

- If the appliance detects a shortage of water while in the cooling/humidifier mode, the pump will stop working, the cooling function indicator (13) flashes and beeps will sound.
- Press the cooling button (27) again to turn off cooling mode and refill the water tank (4) before using cooling mode again.

TIMER (AUTO OFF)

Note:

- While the appliance is powered on, press the timer button (25, 33) to enter the timer mode.
- Continually press the timer button until the desired time is illuminated in the display panel. The h indicator will illuminate.
- When the timing period is complete, the indicator light will go out, the appliance shuts down and enters the standby state.

Note: The timer can be set for up to 9 hours at 1 hour increments.

Note: When the timer is set, the display panel will alternate between the fan speed and timer hours.

SWING

- While the machine is powered on, press the swing button (26, 31) to turn the swing function on.
- The swing indicator light (12) will illuminate.
- To stop the swing function, press the swing button again.

OTHER FUNCTIONS

- **Dimming mode:** The indicators (12-19) and display panel (2) will dim after approximately 1 minute, if a button is not pressed on the control panel or remote control. Press any button (except the power



USING YOUR AIR COOLER

on/off button) to restore the lights.

- **Memory function:** The mode used before shutdown will be maintained when the appliance is next used. (Except for the timer and sleep modes).
- **Plasma function:** The plasma turns on after the power is turned on, and the plasma turns off after the power is turned off.

USING THE ICE PACKS

The ice packs (8) have cold storage and heat preservation characteristics, which can absorb the heat in the water and keep the water temperature in the water tank (4) lower than the ambient temperature for several hours, and make the air blowing from the appliance cooler.

- Ensure the ice pack is completely frozen before use.
- Place the frozen ice pack into the water tank. After approximately 10 minutes, the water temperature in the water tank will be lower than the ambient temperature.
- The appliance is equipped with two ice packs to ensure continuous use.

Note: Do not open the cover of the ice pack or swallow its contents.



CARE & CLEANING

WARNING: The appliance **MUST** be unplugged from the mains outlet before cleaning.

- Wipe the main unit with a soft, dry cloth to remove any light dust or debris.

CLEANING THE AIR INLET COVER WITH MESH FILTER

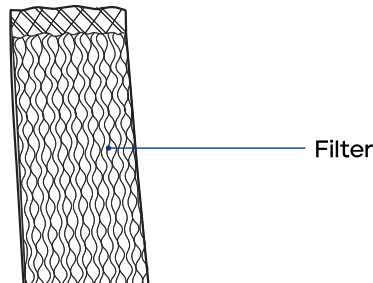
- Remove the air inlet cover with mesh filter (10) from the air cooler, using a soft brush remove any dust/debris that may have built up on the cover.
- Using warm water and mild detergent wash the cover before rinsing with clean water.
- Dry thoroughly before refitting to the appliance.

Note: A build-up of dust on the air inlet mesh filter can affect air flow and is recommend cleaning at least once a month.

CLEANING THE FILTER

- Remove the air inlet cover (10) and lift out the filter (11).
- Using a soft bristled brush gently remove surface dust. Avoid excessive friction which could cause damage to the filter.
- Using warm water rinse the filter with clean water and dry thoroughly.
- Re-fit the filter and replace the air Inlet cover securely.

Note: To maintain optimum performance of your air cooler, we recommend the filter is cleaned at least once a month and replaced every 3-6 months; depending on the frequency of use and environment conditions.





CARE & CLEANING

CLEANING THE WATER TANK

WARNING: Never leave water in the water tank (4) when the appliance is not in use.

- The water tank should be cleaned every few weeks to prevent growth of mould, mildew and bacteria.
- DO NOT use a dishwasher to clean the tank.
- Remove the tank from the dehumidifier and partially fill it with clean water and a little mild detergent. Swish the water around in the tank, empty and rinse with clean water.
- Ensure the tank is dry before refitting to the air cooler.

STORAGE

- Ensure the air cooler, filters (10, 11) and water tank (4) are clean and dry before storing.
- To store your product out of season we recommend using the original box or similar size box.
- Store in a safe, clean and dry place when not in use.



TROUBLESHOOTING

Problem	Solution
No power.	Replace the fuse in the plug with a fuse of the same rating as originally fitted.
	Try a different appliance in the socket.
	Remove obstructions and restart the appliance. Ensure a distance of at least 20cm between the appliance & walls.
Airflow seems weak.	Clean the filters regularly. Follow instructions in the Care and Cleaning section.
Unit is noisy during operation.	Place on firm, flat horizontal surface.
	Clean the filters regularly. Follow instructions in the Care and Cleaning section.

SPARE PARTS

Part Number	Description	Qty per Product	Key Number
33070	Rear air inlet panel with mesh filter	1	10
33071	Filter	1	11
33072	Remote control	1	N/A
33073	Base (in 2 pieces)	1	5



CONTACT US

If you are having a problem with your appliance, please contact our Helpline, as we are more likely to be able to help than the store you purchased the item from. Please have the product name, model number and serial number to hand when you contact us to help us deal with your enquiry quicker.

email: hello@morphyrichards.co.uk

www.morphyrichards.co.uk

PRODUCT RECYCLING



For electrical products sold within the European Community, at the end of the electrical products useful life, it should not be disposed of with household waste.

Please recycle where facilities exist.

Check with your Local Authority or retailer for recycling advice in your country.



REGISTERING YOUR 3 YEAR GUARANTEE

Your standard 2 year guarantee is extended for an additional 1 year when you register the product within 28 days of purchase with Morphy Richards. If you do not register the product with Morphy Richards within 28 days, your product is guaranteed for 2 years.



To validate your 3 year guarantee, scan the QR code or register online at www.morphyrichards.co.uk

N.B. Each qualifying product needs to be registered with Morphy Richards individually. Please note that the 2 year guarantee is only available in the UK. Please refer to the 2 year guarantee for more information.

YOUR 2 YEAR GUARANTEE

It is important to retain the retailer's receipt as proof of purchase. Staple your receipt to the back cover for future reference.

Please quote the following information if the product develops a fault. These numbers can be found on the base of the product.

Model no.

Serial no.

All Morphy Richards products are individually tested before leaving the factory. In the unlikely event of any appliance proving to be faulty within 28 days of purchase, it should be returned to the place of purchase for it to be replaced. If the fault develops after 28 days and within 24 months of original purchase, you should contact the Helpline quoting Model number and Serial number on the product, or write to Morphy Richards at the address shown. You may be asked to return a copy of proof of purchase.

Subject to the exclusions set out on the next page (see Exclusions), the faulty appliance will then be repaired or replaced as appropriate and dispatched usually within 7 working days of receipt.

If, for any reason, this item is replaced or repaired during the 2 year



REGISTERING YOUR 3 YEAR GUARANTEE

guarantee period, the guarantee on the new item will be calculated from the original purchase date. Therefore it is vital to retain your original till receipt or invoice to indicate the date of initial purchase.

To qualify for the 2 year guarantee, the appliance must have been used according to the instructions supplied.

The appliance is intended for domestic use only. Misuse or use for commercial or any other purpose will render the guarantee invalid.

Exclusions

Morphy Richards shall not be liable to replace or repair the goods under the terms of the guarantee where:

The fault has been caused or is attributable to accidental use, misuse, negligent use or used contrary to the manufacturer's recommendations or where the fault has been caused by power surges or damage caused in transit.

The appliance has been used on a voltage supply other than that stamped on the products.

Repairs have been attempted by persons other than our service staff (or authorised dealer).

The appliance has been used for hire purposes or non domestic use.

The appliance is second hand or refurbished.

Morphy Richards reserves the right not to carry out any type of servicing under the guarantee at its discretion.

This guarantee does not confer any rights other than those expressly set out above and does not cover any claims for consequential loss or damage. This guarantee is offered as an additional benefit and does not affect your statutory rights as a consumer. Morphy Richards products are intended for household use only. See usage limitations within the location safety instructions.

Disclaimer

Morphy Richards has a policy of continuous improvement in product quality and design. The company, therefore reserves the right to change the specification of its models at any time.



AT823501MUK Rev1

morphy richards



@morphyrichardsuk #loveyourmorphy

morphyrichards.co.uk

Morphy Richards

9 Cabot Lane, Poole, Dorset, BH17 7BY, UK

